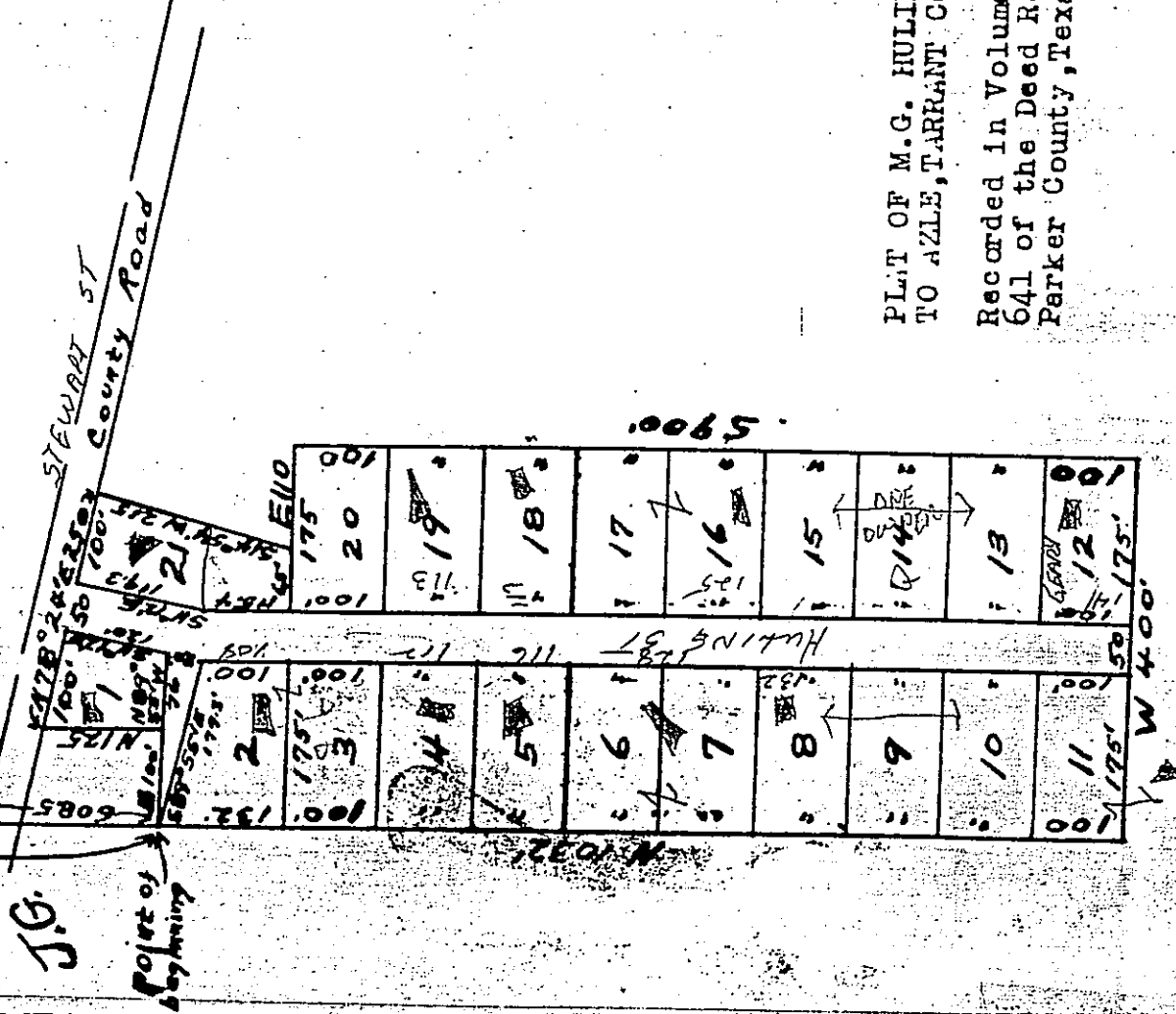


N.W. Cor. J.G. Reynolds Sur  
 Abst. 2052  
 1889

J.G. Reynolds Abst. 2052

Reynolds Abst. 1127



PLAT OF M.G. HULING ADDITION  
 TO AZLE, TARRANT CO., TEXAS

Recorded in Volume 248 at page  
 641 of the Deed Records of  
 Parker County, Texas.

Scale: 1" equals 200'