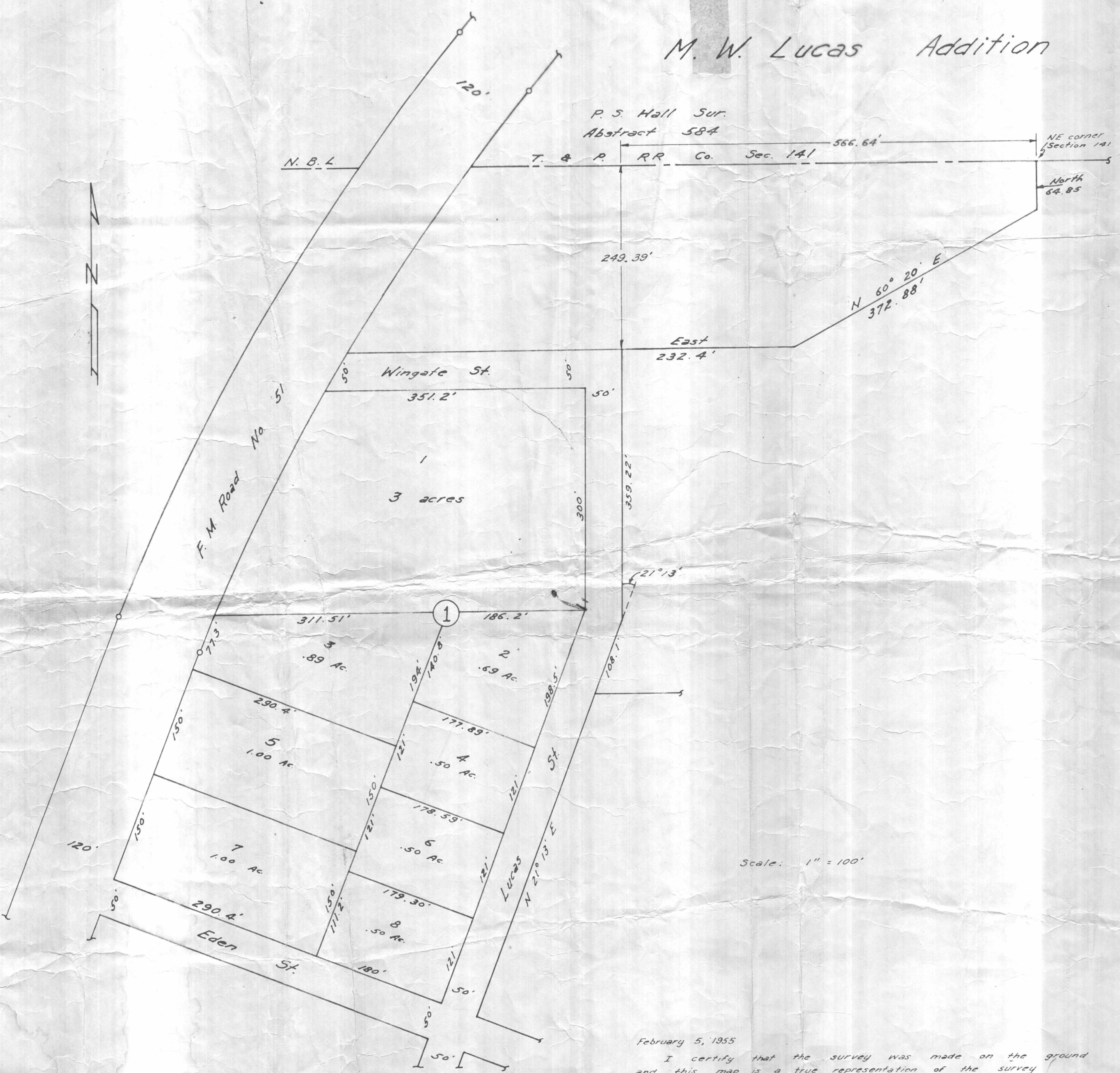


M. W. Lucas Addition



February 5, 1955
 I certify that the survey was made on the ground
 and this map is a true representation of the survey

L. C. McCarlies
 L. C. McCarlies County Engineer - Surveyor
 of Parker County, Texas

RECEIVED AND FILED
 FOR RECORD
 At 2 o'clock P M
 MAR 13 1956
 ORVILLE MILBURN, County Clerk
 PARKER COUNTY, TEXAS
 BY *Nathaniel Parsons* DEPUTY