

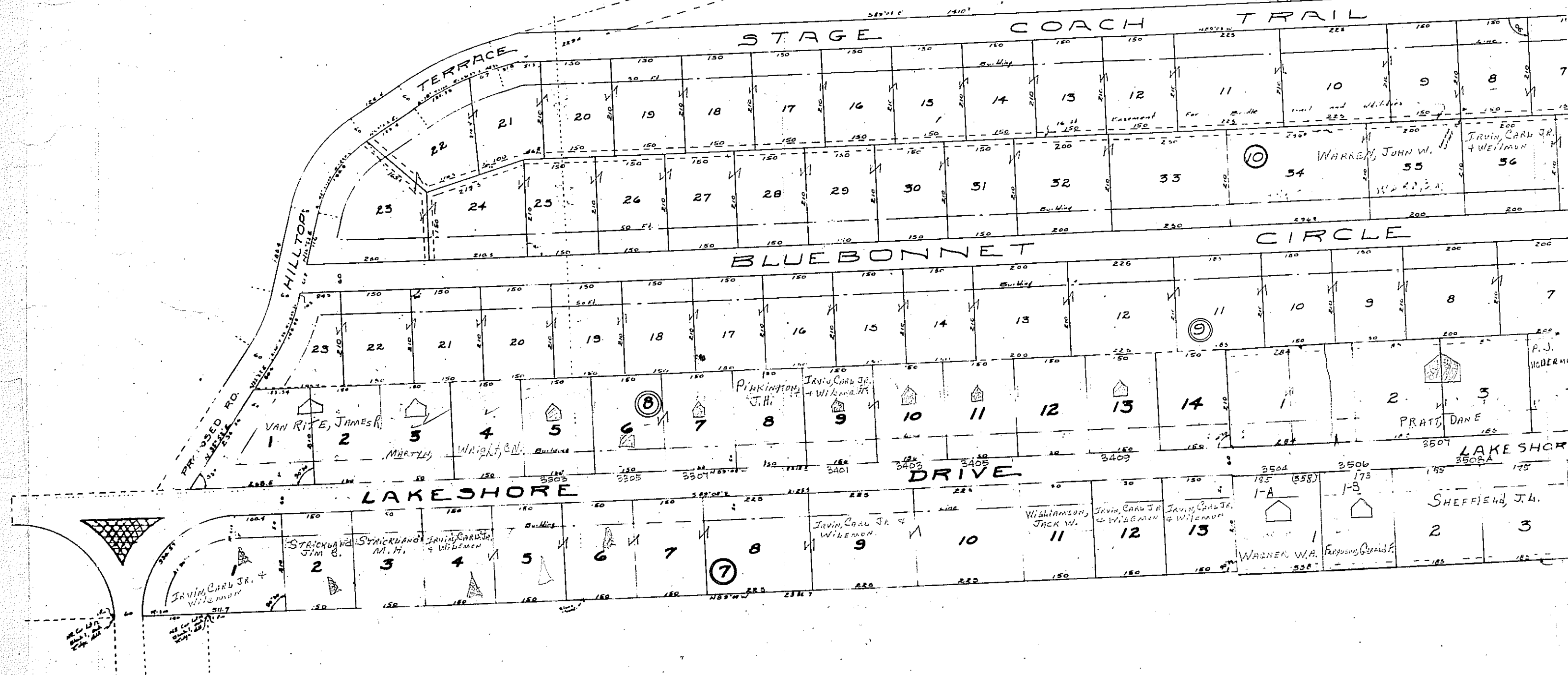
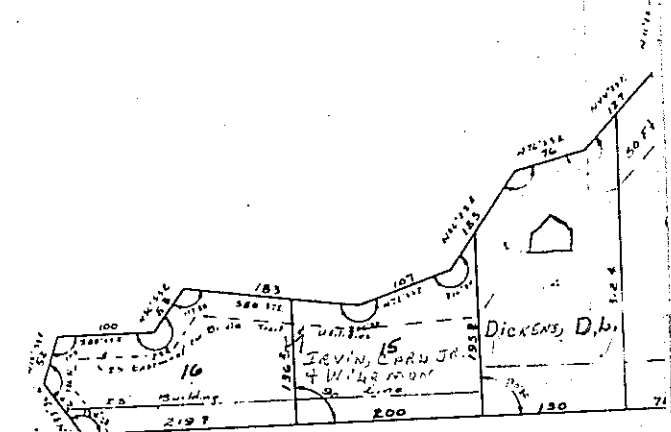
# MAP OF BLOCKS 9-10-11 *Lakeshore Hills Estates*

Third Filing  
Being a Revision of Lots 18, Block 5, Lot 10, Block 4, and a tract  
of land out of the H.A. Boone, T.P. #3, and G.M.P. Johnson Surveys,  
PARKER COUNTY, TEXAS

Approved: \_\_\_\_\_  
COMMISSIONERS COURT  
PARKER COUNTY, TEXAS

By \_\_\_\_\_  
By \_\_\_\_\_

I certify that this is a true Map  
according to a survey made on the  
ground Jan 1957.  
By \_\_\_\_\_  
Public Surveyor  
4081 A East 22nd St  
Fort Worth, Texas  
Phone 326-1049



*Continued on next page*