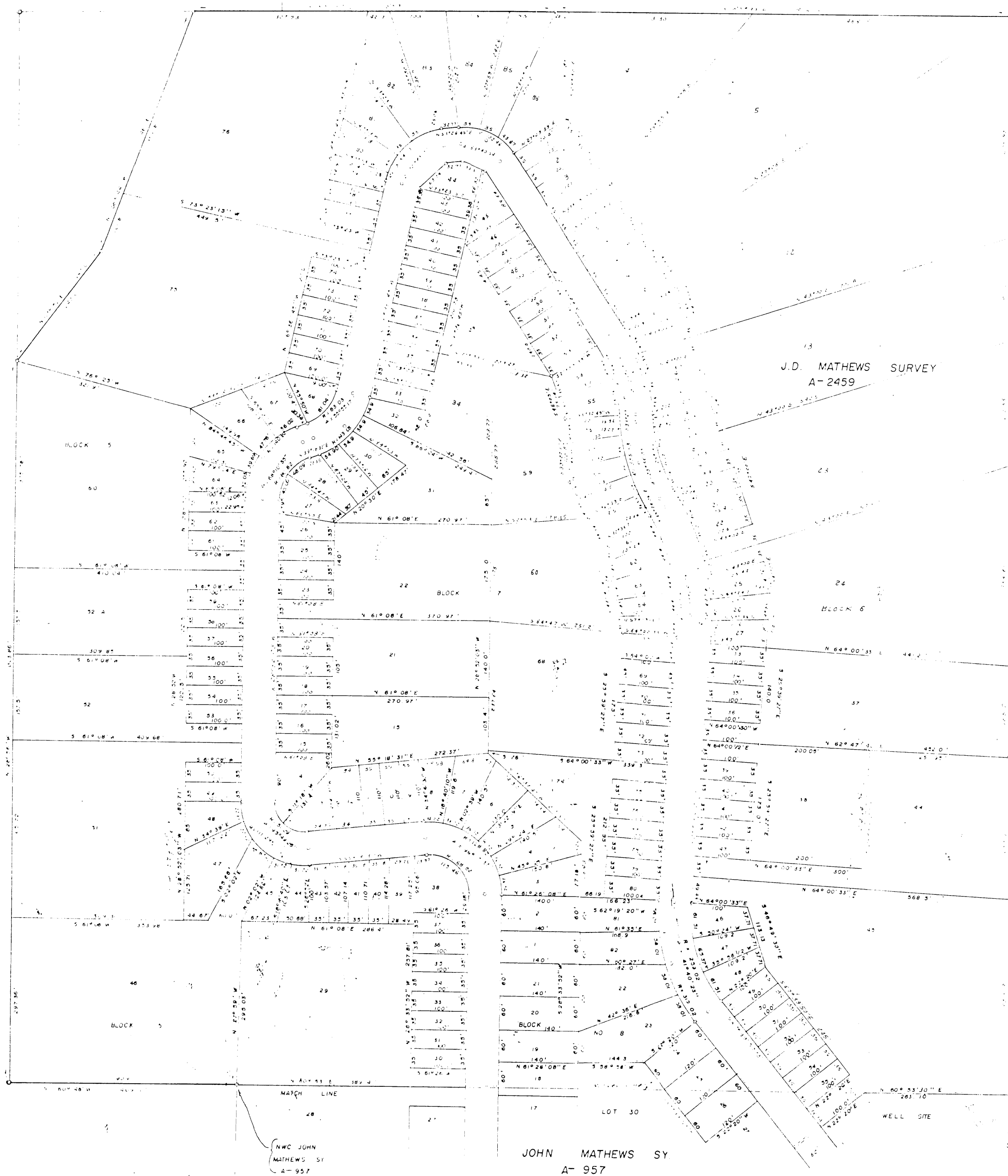


J. C. REECE SURVEY

FRANK CRESWELL SURVEY  
A-2482



J. D. MATHEWS SURVEY  
A-2459

E. B. DAVIDSON SURVEY  
A-386

LAKE COUNTRY ACRES

BEING A SUBDIVISION OF 230.87 ACRES OF LAND OUT OF  
THE JOHN MATHEWS SURVEY, THE FRANK CRESWELL SURVEY,  
THE JOHN B. ATWOOD SURVEY, AND THE J. D. MATHEWS  
SURVEY.  
PARKER COUNTY, TEXAS

STATE OF TEXAS COUNTY OF PARKER  
I hereby certify that this instrument was filed  
this 5th day of January 1979 at 2:25 o'clock P.M.  
in the public records of Parker County as stamped here-  
on.  
FILED JAN 10 1979



Carrie Reed  
County Clerk, Parker County, Tex.

RECEIVED AND FILED  
FOR RECORD  
At 2:25 o'clock P.M.

JAN 5 1979

CARRIE REED, Co. Clerk  
PARKER COUNTY, TEXAS  
By *J. N.* Deputy  
10.489

PLATTED BY: WAYNE GRAHAM  
REGISTERED PUBLIC SURVEYOR  
FEBRUARY 20, 1978

