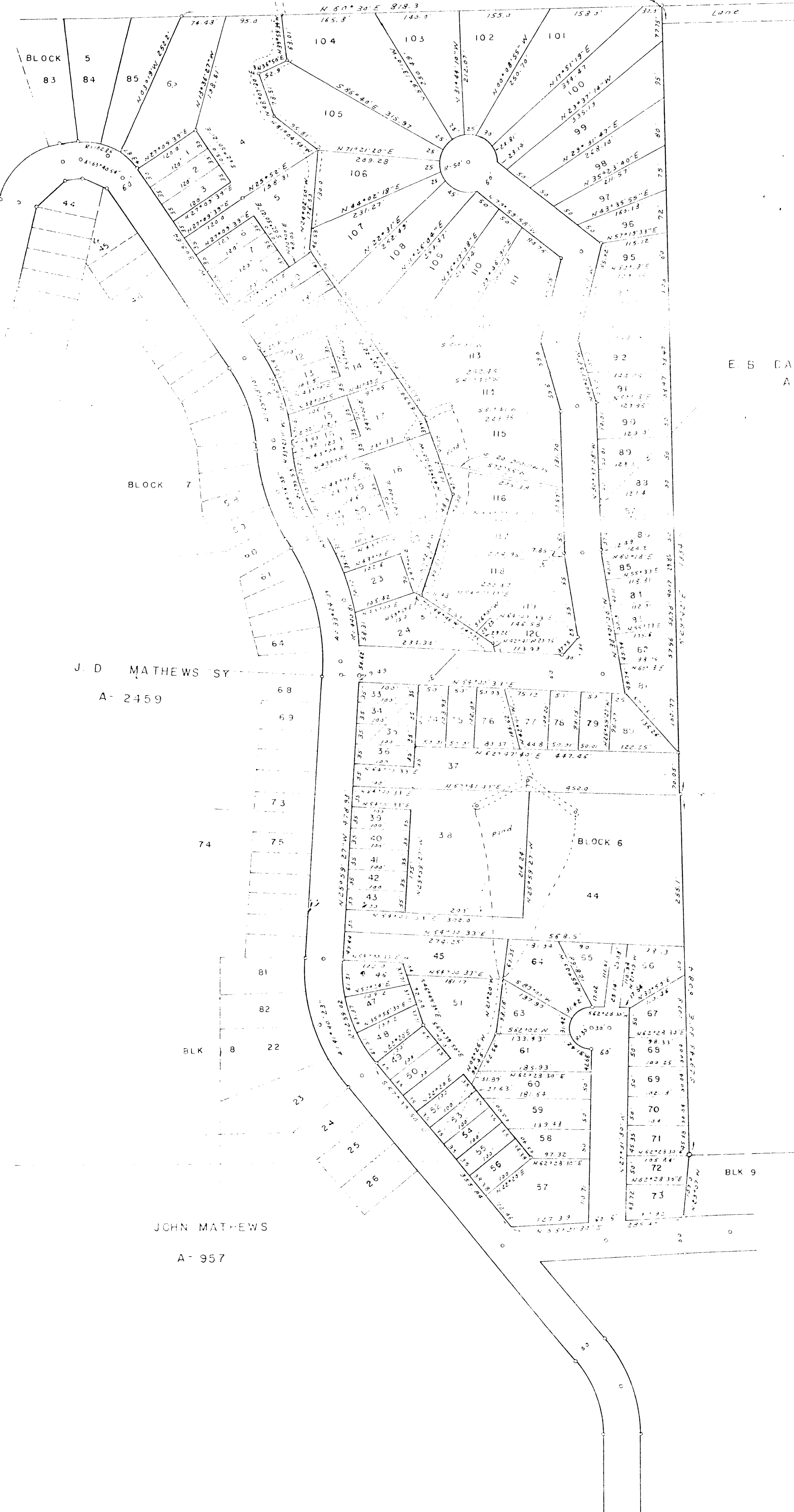


Plan 302-A Page 22

J. C. REECE SURVEY



E. B. DAVIDSON SURVEY  
A-386

PLAT OF A REPLAT OF LOT NO. 85 OF BLOCK NO. 5, LOTS NO. 1 THRU 45 OF BLOCK NO. 6 AND A FORMER WELL SITE TRACT IN BLOCK NO. 9 OF LAKE COUNTRY ACRES, A SUBDIVISION OF LAND OFF OF THE JOHN MATHEWS SURVEY, THE FRANK CRESWELL SURVEY, THE JOHN B. ATWOOD SURVEY AND THE J. D. MATHEWS SURVEY, IN PARKER COUNTY, TEXAS INTO LOTS NO. 1 THRU 23, LOTS 33 THRU 120 OF BLOCK NO. 6 OF LAKE COUNTRY ACRES, PARKER COUNTY, TEXAS.

PLATTED BY: Yours faithfully  
REGISTERED PUBLIC SURVEYOR  
JANUARY 19, 1983.

RECORDED  
RECEIVED AND FILED  
FOR RECORD  
At 11:20 O'Clock  
APR 19 1983  
CARRIE REED, Co. Clerk,  
PARKER COUNTY, TEXAS  
By [Signature] Deputy  
10.008d

STATE OF TEXAS COUNTY OF PARKER  
I hereby declare that this instrument was filed  
on this day and time stamped, indexed by me and  
was duly recorded in the volume and page of the  
Public Records of Parker County as stamped here-  
on by me.  
RECORDED APR 19 1983  
Lerie Paul  
County Clerk, Parker County, Tex.  
[Seal]

Must be done under this page

