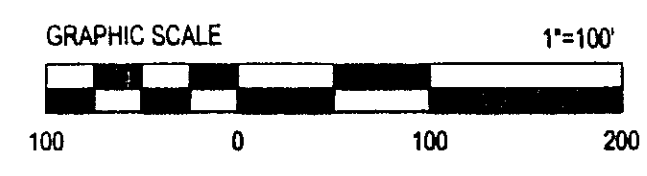
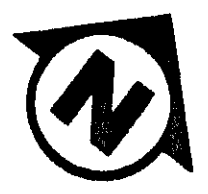
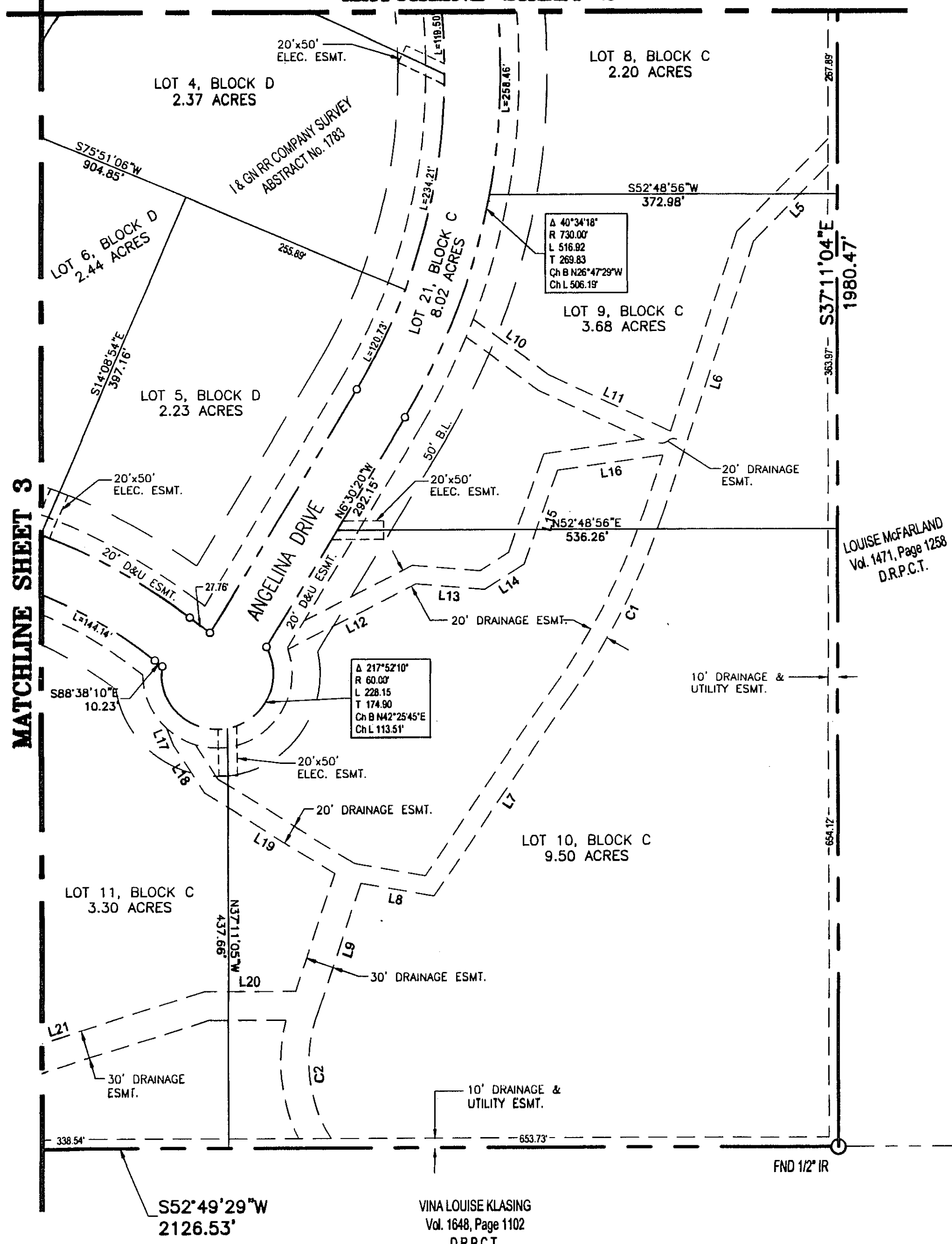


MATCHLINE SHEET 2



DRAINAGE ESMT LINE DATA		
LINE	BEARING	LENGTH
L1	N45° 14' 57"E	22.39'
L2	N76° 14' 04"E	115.74'
L3	N47° 02' 29"E	139.99'
L4	N56° 10' 01"E	173.05'
L5	N06° 56' 16"E	114.36'
L6	N18° 59' 23"W	314.37'
L7	N02° 22' 17"W	257.54'
L8	N63° 00' 02"E	79.47'
L9	N18° 13' 18"W	140.37'
L10	N89° 33' 14"E	101.27'
L11	N78° 11' 17"E	144.14'
L12	N25° 15' 24"E	155.13'
L13	N57° 48' 11"E	73.86'
L14	N19° 31' 31"E	50.43'
L15	N17° 53' 40"W	108.60'
L16	N44° 37' 38"E	114.12'
L17	N59° 04' 01"W	19.98'
L18	S70° 14' 33"E	60.11'
L19	N83° 57' 32"E	162.93'
L20	N52° 44' 58"E	97.54'
L21	N35° 54' 44"E	321.36'
L22	N42° 04' 33"E	309.98'

DRAINAGE ESMT CURVE DATA					
CURVE	ARC LENGTH	RADIUS	DELTA	Lc BEARING	Lc LENGTH
C1	221.373	763.230	016.6185	N10°40'50"W	220.60
C2	137.370	139.207	056.5396	S43°05'27"E	131.86

STREET TABLE	
NAME	LENGTH
RUSTIC VIEW LANE	1,679 FEET
ANGELINA DRIVE	3,130 FEET
BRAZOS COURT	532 FEET

LOUISE McFARLAND
Vol. 1471, Page 1258
D.R.P.C.T.

MATCHLINE SHEET 3

ACCT. NO.: 14275
SCH. DIST.: AL
CITY: NONE
MAP NO.: L-19

FINAL PLAT
LA MADERA - PHASE THREE

I & GN RR COMPANY SURVEY, ABSTRACT No. 1782,
I & GN RR COMPANY SURVEY, ABSTRACT No. 1783
PARKER COUNTY, TEXAS

FILED AND RECORDED
OFFICIAL PUBLIC RECORDS

Jeanne Brunson
201301947
01/28/2013 09:34 AM
Fee: 78.00
Jeanne Brunson, County Clerk
Parker County, Texas
PLAT

BARRON, STARK & SWIFT
CONSULTING ENGINEERS, LP
CIVIL ENGINEERING • LAND SURVEYING
6221 Southwest Boulevard, Suite 100
Fort Worth, Texas 76132
(O) 817.231.8100 (F) 817.231.8144
Texas Registered Engineering Firm F-10998
www.barronstark.com

FILED FOR RECORD
PARKER COUNTY, TEXAS PLAT RECORD
CABINET _____, SLIDE _____
DATE _____