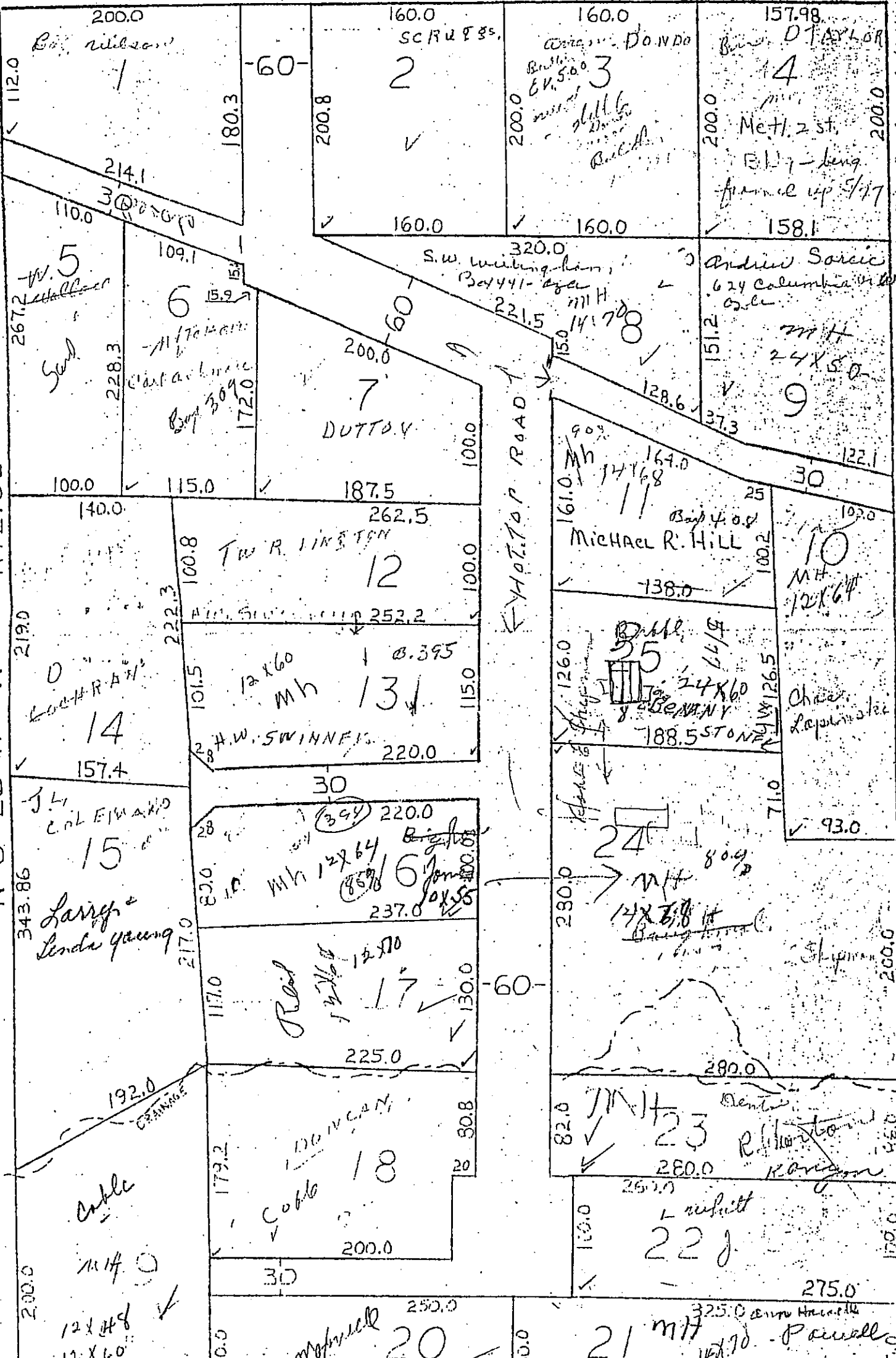




N 0° 26' 11" W 1172.06'



10  
or less  
1000.0  
7.10  
9000.

12x48  
11x60

Cable  
mth

20

21

22

23

122	1	2	7 3	4	5	1	2	3	6 4	5	6	7	8
		30	30	30	30	30	30	30	30	30	30	30	40%

Side

W. 4TH ST. Hill

Street



Sunny

ASH ST

Street

MAIN (FM 51) Decatur

W 3RD ST

Donathan

Plat of J.B.Hill's Addition,  
to Springtown, Parker County Texas,  
Vol 80 PG 629