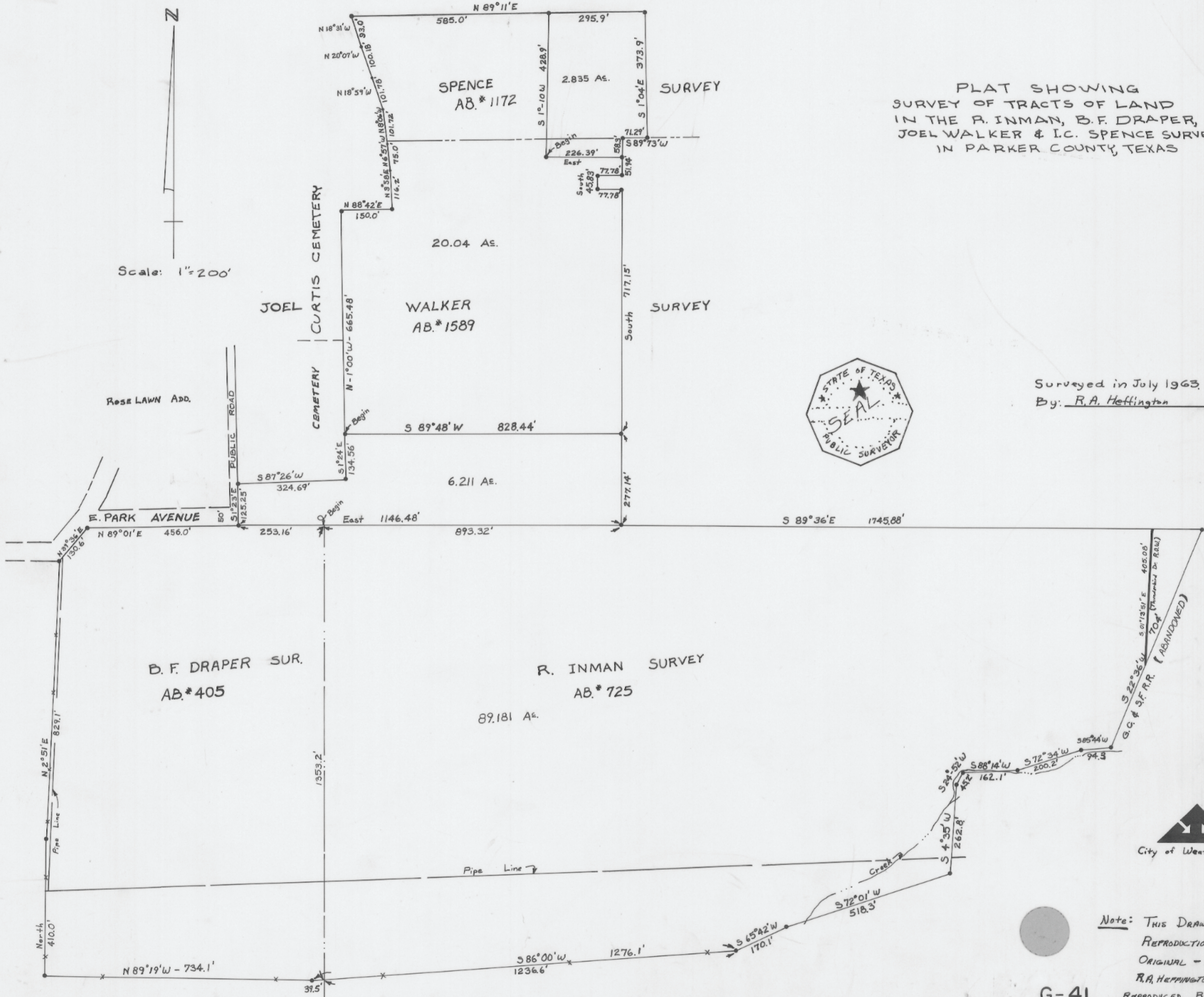




Scale: 1"=200'

PLAT SHOWING
SURVEY OF TRACTS OF LAND
IN THE R. INMAN, B.F. DRAPER,
JOEL WALKER & I.C. SPENCE SURVEYS
IN PARKER COUNTY, TEXAS

Surveyed in July 1963.
By: R.A. Hefington



J.W. WALKER
AB. 1589

AB. 873



Note: THIS DRAWING IS A
REPRODUCTION OF THE
ORIGINAL - DRAWN BY
R.A. HEFFINGTON IN 1963.
REPRODUCED BY T.A.T. - Feb. 1986