

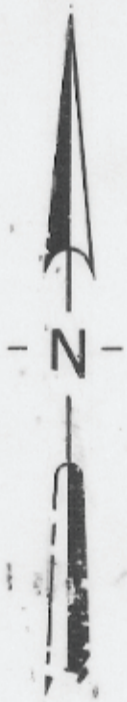
INTERSTATE HWY. 20

BANKHEAD HWY.

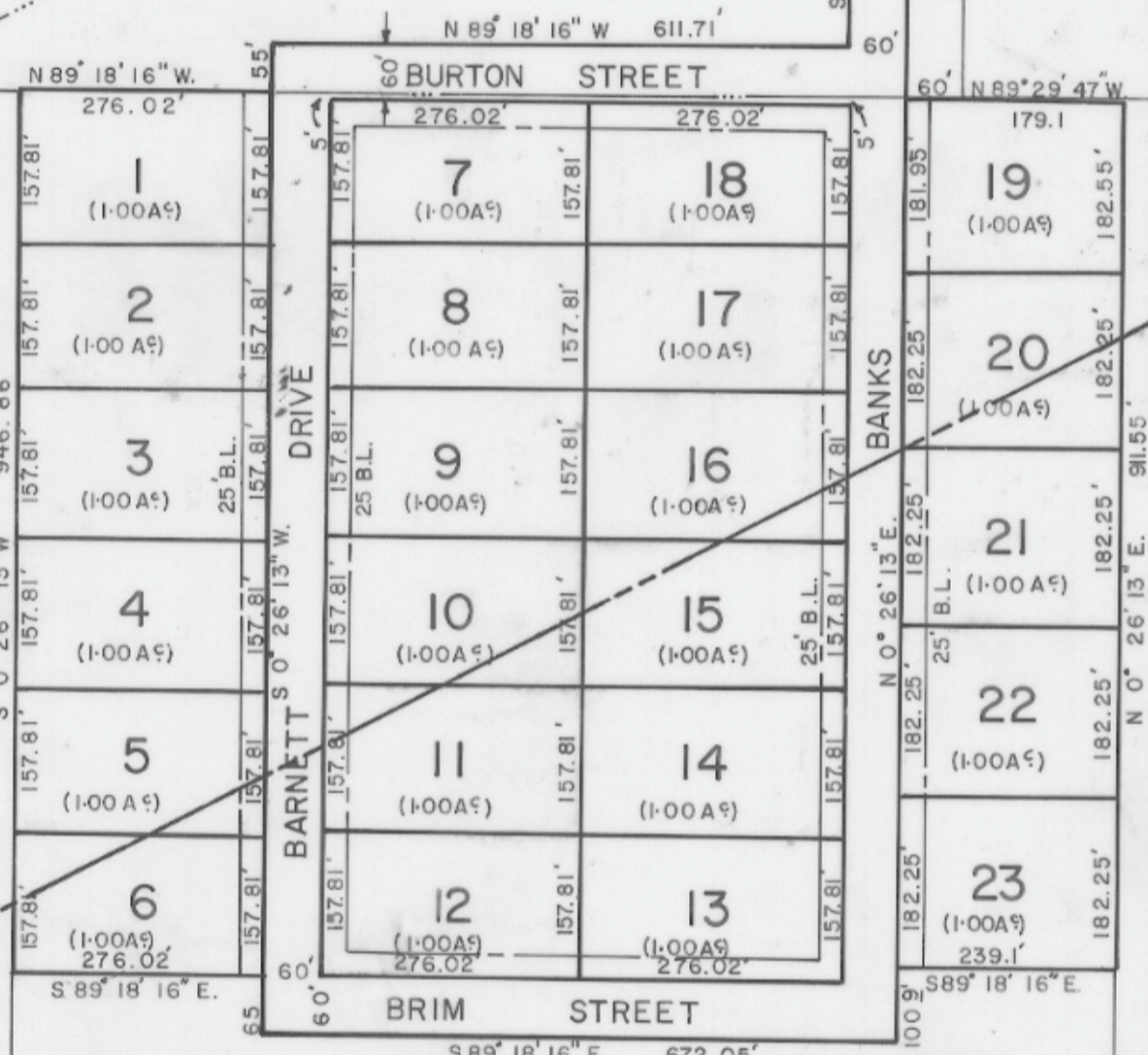
MARIA ANTONIO MESA SUR.  
AB. 856

A. SIMONS SUR.  
AB. 1205

O.H. GORMAN SUR. AB. 2585



NEW CITY LIMIT LINE  
9-81



A. MOORE SUR. AB. 905

T & P RR. ROW.

### I-20 INDUSTRIAL PARK

A SUBDIVISION IN THE MARIA ANTONIO MESA SUR.  
ab. 856 AND THE A. MOORE SUR. ab. 905 PARKER  
COUNTY, TEXAS

543