

VICINITY MAP  
NTS

JOHN B. HIBBERT SURVEY  
ABST. NO. 613

TANGENT TABLE

COURSE	BEARING	DISTANCE
(T-1)	S 51°28'38"E	44.31'
(T-2)	N 00°07'00"E	71.44'
(T-3)	S 41°32'00"E	22.36'
(T-4)	N 13°24'46"W	43.61'
(T-5)	N 11°45'27"W	41.65'
(T-6)	N 05°26'46"W	36.03'
(T-7)	N 53°36'16"W	63.65'
(T-8)	N 65°27'01"W	56.11'
(T-9)	N 65°36'25"W	67.25'
(T-10)	N 64°14'07"W	51.25'
(T-11)	N 65°27'01"W	68.91'
(T-12)	N 67°14'14"W	59.07'
(T-13)	N 35°34'53"W	28.66'
(T-14)	N 89°33'00"E	22.80'
(T-15)	N 89°33'00"E	11.93'
(T-16)	S 14°54'37"E	35.87'

NOTE: OVERHEAD TRI-COUNTY ELECTRIC LINE SHOWN ON PLAT RECORDED IN P.C. B. S. 567 HAS BEEN ABANDONED AND REMOVED.

I HEREBY CERTIFY THAT THIS PLAT WAS PREPARED FROM A SURVEY ON THE GROUND UNDER MY SUPERVISION. ALL CORNERS ARE 1/2" IRONS FOUND OR SET EXCEPT AS NOTED.

*Brent A. Mizell*  
BRENT A. MIZELL  
REGISTERED PROFESSIONAL LAND SURVEYOR  
TEXAS REGISTRATION NO. 1967  
January 15, 2001  
Revised: March 3, 2003  
Revised: July 16, 2003



LARRY B. WHITE  
V. 1193, P. 1308

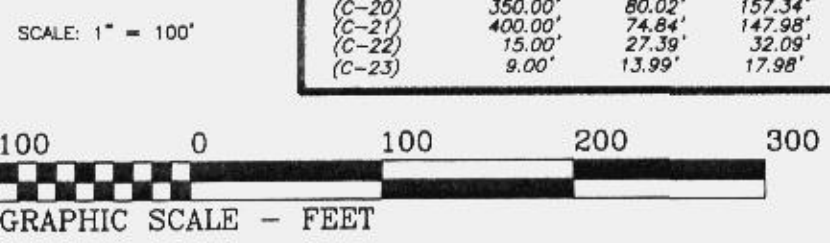
ROBERT DAUGHTERY, ETUX  
V. 424, P. 329

CURVE TABLE

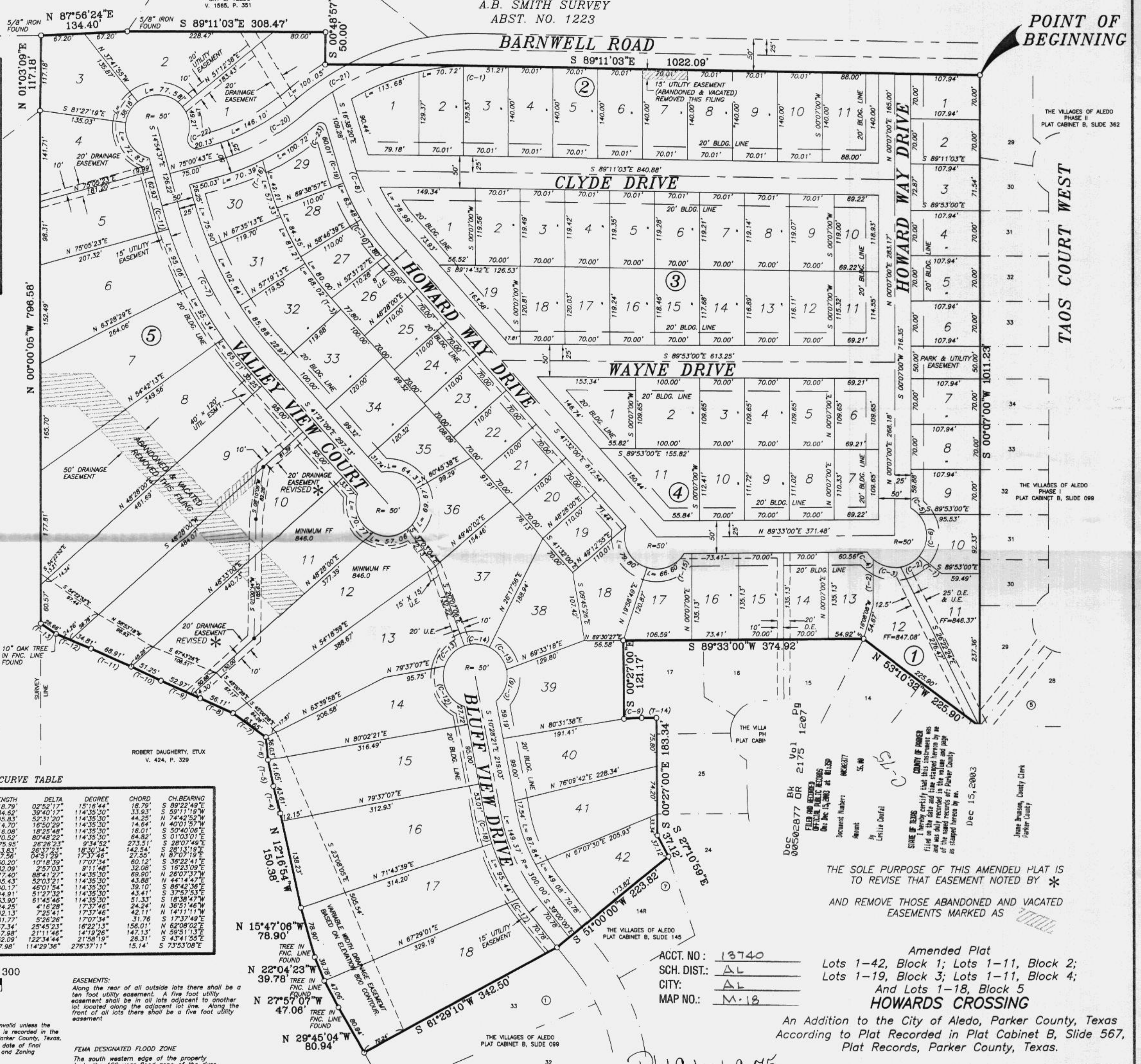
CURVE	RADIUS	TANGENT	LENGTH	DELTA	DEGREE	CHORD	CH. BEARING
(C-1)	375.00'	9.40'	18.79'	02°52'17"	15°16'44"	18.79'	S 89°22'49"E
(C-2)	50.00'	18.04'	34.62'	39°40'17"	114°35'30"	33.93'	S 59°11'19"W
(C-3)	50.00'	24.67'	45.83'	52°31'20"	114°35'30"	44.25'	S 74°42'52"W
(C-4)	50.00'	7.40'	14.70'	16°50'29"	114°35'30"	14.64'	N 40°01'57"W
(C-5)	50.00'	8.11'	16.08'	18°25'48"	114°35'30"	16.01'	S 50°40'06"E
(C-6)	50.00'	42.56'	70.52'	80°48'22"	114°35'30"	64.82'	S 01°03'01"E
(C-7)	598.00'	140.48'	275.95'	26°26'23"	93°54'52"	273.51'	S 28°07'49"E
(C-8)	309.65'	73.24'	143.83'	26°37'21"	183°30'34"	142.54'	S 28°13'19"E
(C-9)	325.00'	13.78'	27.56'	04°51'29"	173°37'46"	27.55'	S 87°07'19"E
(C-10)	334.55'	30.18'	60.20'	10°18'39"	170°37'34"	60.12'	S 36°22'41"E
(C-11)	623.00'	18.05'	32.09'	2°57'03"	91°11'48"	32.08'	S 16°23'09"E
(C-12)	50.00'	48.87'	77.40'	88°41'27"	114°35'30"	69.90'	N 26°07'37"W
(C-13)	50.00'	24.42'	45.43'	52°03'21"	114°35'30"	43.88'	N 44°14'47"E
(C-14)	50.00'	21.24'	40.17'	46°01'54"	114°35'30"	39.10'	S 86°42'36"W
(C-15)	50.00'	24.10'	44.91'	51°27'32"	114°35'30"	43.41'	S 37°52'53"E
(C-16)	50.00'	29.90'	53.90'	61°45'46"	114°35'30"	51.33'	S 18°38'47"W
(C-17)	325.00'	12.13'	24.25'	4°16'28"	173°37'46"	24.24'	N 36°51'46"W
(C-18)	325.00'	21.10'	42.13'	7°25'41"	173°37'46"	42.11'	N 14°11'11"W
(C-19)	334.55'	15.90'	31.77'	5°26'26"	170°37'34"	31.76'	S 17°37'49"E
(C-20)	350.00'	80.02'	157.34'	25°45'23"	162°21'13"	156.01'	N 62°08'02"E
(C-21)	400.00'	74.84'	147.98'	21°11'46"	141°19'26"	147.13'	N 59°51'13"E
(C-22)	15.00'	27.39'	32.09'	122°34'44"	21°58'19"	28.31'	S 43°41'55"E
(C-23)	9.00'	13.99'	17.98'	114°29'36"	276°37'11"	15.14'	S 73°53'08"E

EASEMENTS:  
Along the rear of all outside lots there shall be a ten foot utility easement. A five foot utility easement shall be in all lots adjacent to another lot located along the adjacent lot line. Along the front of all lots there shall be a five foot utility easement.

FEMA DESIGNATED FLOOD ZONE  
The south western edge of the property is in the 100 year flood zone of the river.



MIZELL LAND SURVEYING, INC.  
117 John Street P.O. Box 1029  
Aledo, TX 76008  
817-441-6199 FAX: 817-441-6805



Doc 00562877 BK U91 PB 1207  
FILED FOR RECORD  
OFFICE OF THE COUNTY CLERK  
CITY OF ALEDO, TEXAS  
DATE: Dec 15, 2003  
Instrument Number: 00562877  
Amount: \$5.00  
By: Letitia Duffall

THE SOLE PURPOSE OF THIS AMENDED PLAT IS TO REVISE THAT EASEMENT NOTED BY \* AND REMOVE THOSE ABANDONED AND VACATED EASEMENTS MARKED AS

Amended Plat  
Lots 1-42, Block 1; Lots 1-11, Block 2;  
Lots 1-19, Block 3; Lots 1-11, Block 4;  
And Lots 1-18, Block 5  
**HOWARDS CROSSING**

An Addition to the City of Aledo, Parker County, Texas  
According to Plat Recorded in Plat Cabinet B, Slide 567,  
Plat Records, Parker County, Texas.

ACCT. NO.: 13740  
SCH. DIST.: AL  
CITY: AL  
MAP NO.: M-18

Plat Cabinet C-75