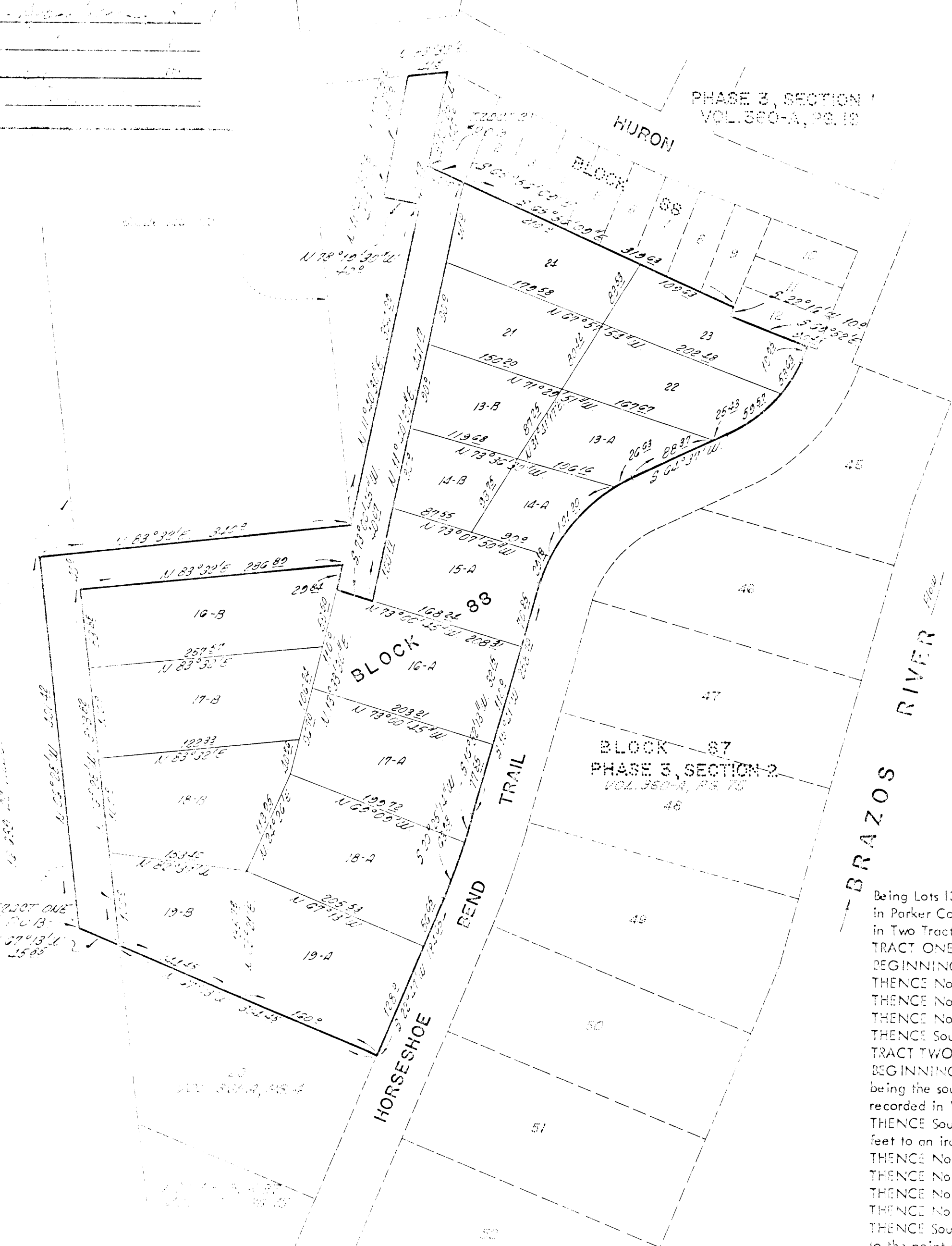


APPROVED: COMMISSIONERS COURT
PARKER COUNTY TEXAS

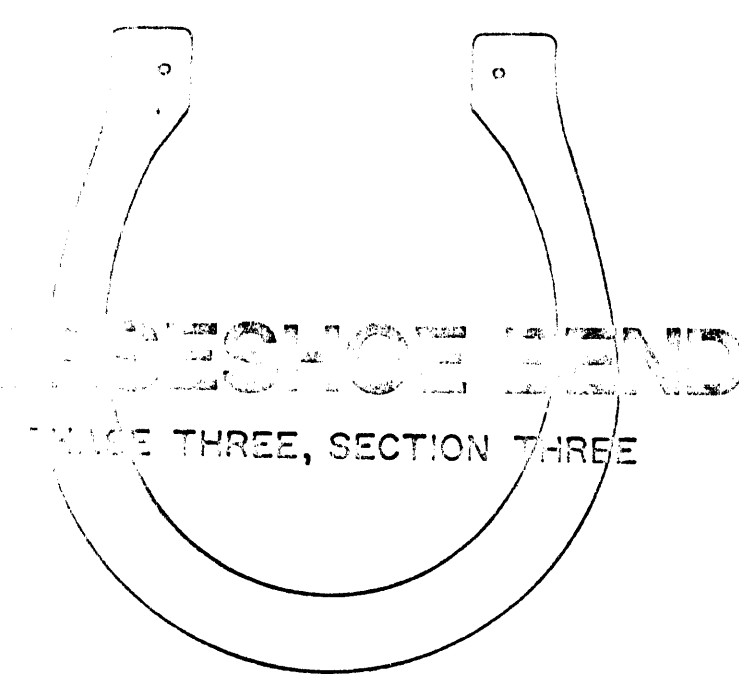
DATE _____

THIS PROPERTY IS IN THE BRAZOS RIVER FLOODPLAIN



MAP SHOWING

LOTS 13, 14-A, 14-B, 15-A, 16-A, 16-B, 17-A, 17-B,
18-A, 18-B, 19-A, 19-B, AND LOTS 46 THRU 51, BLOCK 88



51035

RECEIVED AND FILED
FOR RECORD
AT 11:15.0'clock P.M.
JUN 22 1982

CAROL REED, Co. Clerk
PARKER COUNTY, TEXAS
By _____ Deputy
10:42 AM

STATE OF TEXAS COUNTY OF PARKER
I hereby certify that this instrument was filed
on the date and time stamped hereon by me and
was duly recorded in the volume and page of the
named records of Parker County as stamped here-
on by me.

RECORDED JUN 21 1982



Carrie Reed
County Clerk, Parker County, Tex.

AN ADDITION IN PARKER COUNTY, TEXAS OUT OF THE
HEZEKIAH JONES SURVEY, BEING A REVISION OF LOTS
13 THRU 19, BLOCK 88 OF SAID HORSESHOE BEND AS
RECORDED IN VOL. 361-A, PG. 4, AND A PORTION OF
BLOCK 87 OF SAID HEZEKIAH JONES SURVEY
DESCRIBED AS TRACTS 1&2 BELOW

Property Description:
Being Lots 13 thru 19, Block 88, Horseshoe Bend, Phase Three, Section Three, an Addition
in Parker County, Texas, and a portion of the Hezekiah Jones Survey and being described
in Two Tracts as follows:

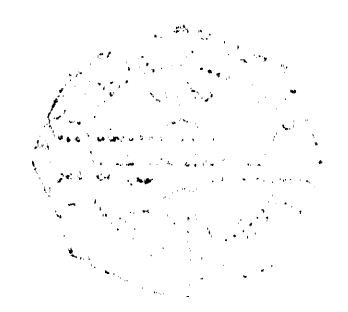
TRACT ONE
BEGINNING at the southwest corner of Lot 19, in said Block 88, Horseshoe Bend;
THENCE North 67° - 30' West a distance of 45.85 feet to a point for corner;
THENCE North 06° - 30' West a distance of 401.42 feet to a point for corner;
THENCE North 83° - 30' East a distance of 40.0 feet to a point for corner;
THENCE South 06° - 30' East a distance of 423.82 feet to a point of beginning.

TRACT TWO
BEGINNING at the northwest corner of Lot 13, in said Block 88, Horseshoe Bend, same
being the southwest corner of Lot 1, Block 88, Horseshoe Bend, Phase 3, Section 1, as
recorded in Volume 360-A, page 19, Deed Records, Parker County, Texas;
THENCE South 10° - 20' West along the westerly line of said Lot 13, a distance of 40.97
feet to an iron pin for corner;
THENCE North 78° - 30' - 30" West a distance of 40.0 feet to an iron pin for corner;
THENCE North 11° - 40' - 30" East 40.61 feet to an angle point;
THENCE North 10° - 20' East 94.35 feet to an iron pin for corner;
THENCE North 83° - 30' East 41.0 feet to the northwest corner of said Lot 1;
THENCE South 10° - 20' West along the westerly line of said Lot 1, a distance of 107.0 feet
to the point of beginning.

SCALE 1" = 100'

ALL LOTS 13 THROUGH 19 ARE ROW FOR INGRESS & EGRESS
AND SUBJECT TO EASEMENTS

GRAPHIC SCALE 1" = 100'



J. P. "Jim" DUNAWAY
REGISTERED PUBLIC SURVEYOR
2002 COLLETT ROAD
FORT WORTH, TEXAS

I, J. P. Dunaway, CERTIFY
THIS PLAT IS TRUE AND CORRECT AS
SURVEYED ON THE GROUND AND THESE
ARE THE ENCLOSUREMENTS OR RESTRICTIONS
EXCEPT AS SHOWN.

DATE: 6-16-82

A-397