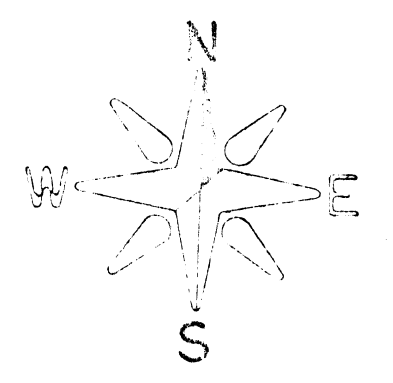
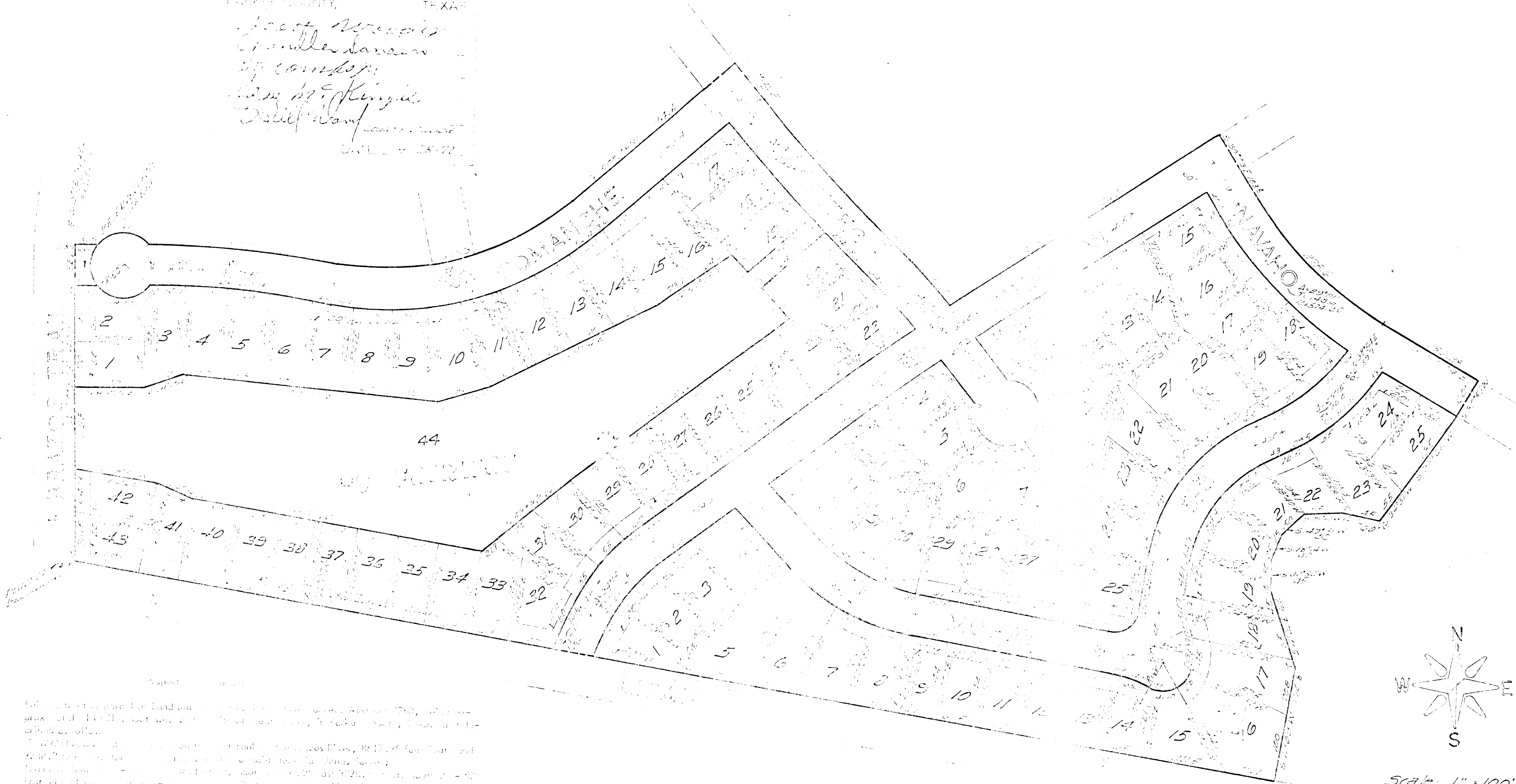


PARKER COUNTY, TEXAS
 West Woods
 Chandler Sams
 by commission
 Sam M. King
 Deed Warrant
 ONE - 25 - 72



Scale: 1" = 100'

Block 12 and 13 of land in the West Woods Survey, Abstract 1249, containing approximately 1400 acres, more or less, of land, in Parker County, Texas, and the divided as follows:
 The West Woods Survey, on the West bank of the Brazos River, 2017.25 feet wide and 22.66 feet deep, containing 458.12 acres, more or less, of land, in Parker County, Texas, was surveyed by J. R. Dunaway, Registered Public Surveyor, on the 19th day of August, 1972, and is shown on the plat of the West Woods Survey, recorded in the Public Records of Parker County, Texas, as Abstract 1249, Book 1, Page 1. The West Woods Survey is bounded on the north by the Brazos River, on the east by the West Woods Survey, on the south by the West Woods Survey, and on the west by the West Woods Survey. The West Woods Survey is divided into 44 lots, more or less, of land, in Parker County, Texas, as follows:
 Block 12, containing 12 lots, more or less, of land, in Parker County, Texas, as follows:
 Lot 1, 12.00 feet wide and 12.00 feet deep, containing 144.00 acres, more or less, of land, in Parker County, Texas.
 Lot 2, 12.00 feet wide and 12.00 feet deep, containing 144.00 acres, more or less, of land, in Parker County, Texas.
 Lot 3, 12.00 feet wide and 12.00 feet deep, containing 144.00 acres, more or less, of land, in Parker County, Texas.
 Lot 4, 12.00 feet wide and 12.00 feet deep, containing 144.00 acres, more or less, of land, in Parker County, Texas.
 Lot 5, 12.00 feet wide and 12.00 feet deep, containing 144.00 acres, more or less, of land, in Parker County, Texas.
 Lot 6, 12.00 feet wide and 12.00 feet deep, containing 144.00 acres, more or less, of land, in Parker County, Texas.
 Lot 7, 12.00 feet wide and 12.00 feet deep, containing 144.00 acres, more or less, of land, in Parker County, Texas.
 Lot 8, 12.00 feet wide and 12.00 feet deep, containing 144.00 acres, more or less, of land, in Parker County, Texas.
 Lot 9, 12.00 feet wide and 12.00 feet deep, containing 144.00 acres, more or less, of land, in Parker County, Texas.
 Lot 10, 12.00 feet wide and 12.00 feet deep, containing 144.00 acres, more or less, of land, in Parker County, Texas.
 Lot 11, 12.00 feet wide and 12.00 feet deep, containing 144.00 acres, more or less, of land, in Parker County, Texas.
 Lot 12, 12.00 feet wide and 12.00 feet deep, containing 144.00 acres, more or less, of land, in Parker County, Texas.
 Block 13, containing 13 lots, more or less, of land, in Parker County, Texas, as follows:
 Lot 1, 13.00 feet wide and 13.00 feet deep, containing 169.00 acres, more or less, of land, in Parker County, Texas.
 Lot 2, 13.00 feet wide and 13.00 feet deep, containing 169.00 acres, more or less, of land, in Parker County, Texas.
 Lot 3, 13.00 feet wide and 13.00 feet deep, containing 169.00 acres, more or less, of land, in Parker County, Texas.
 Lot 4, 13.00 feet wide and 13.00 feet deep, containing 169.00 acres, more or less, of land, in Parker County, Texas.
 Lot 5, 13.00 feet wide and 13.00 feet deep, containing 169.00 acres, more or less, of land, in Parker County, Texas.
 Lot 6, 13.00 feet wide and 13.00 feet deep, containing 169.00 acres, more or less, of land, in Parker County, Texas.
 Lot 7, 13.00 feet wide and 13.00 feet deep, containing 169.00 acres, more or less, of land, in Parker County, Texas.
 Lot 8, 13.00 feet wide and 13.00 feet deep, containing 169.00 acres, more or less, of land, in Parker County, Texas.
 Lot 9, 13.00 feet wide and 13.00 feet deep, containing 169.00 acres, more or less, of land, in Parker County, Texas.
 Lot 10, 13.00 feet wide and 13.00 feet deep, containing 169.00 acres, more or less, of land, in Parker County, Texas.
 Lot 11, 13.00 feet wide and 13.00 feet deep, containing 169.00 acres, more or less, of land, in Parker County, Texas.
 Lot 12, 13.00 feet wide and 13.00 feet deep, containing 169.00 acres, more or less, of land, in Parker County, Texas.
 Lot 13, 13.00 feet wide and 13.00 feet deep, containing 169.00 acres, more or less, of land, in Parker County, Texas.

MAP SHOWING
 BLOCKS 12 AND 13, AND
 LOTS 1 THRU 13, BLOCK 11,
 HORSESHOE BEND
 PHASE TWO, SECTION ONE,
 AN ADDITION TO PARKER COUNTY, TEXAS,
 OUT OF THE HEZEKIAH LONES SURVEY

12497

RECEIVED AND FILED
 FOR RECORD
 APR 20 1972
 T. H. "Tommy" McDaniel, Co. Clerk
 PARKER COUNTY, TEXAS
 By _____ Deputy

J. R. JIM DUNAWAY
 REGISTERED PUBLIC SURVEYOR
 5300 EDGECLIFF ROAD
 FORT WORTH TEXAS
 I, J. R. Dunaway, CERTIFY
 THIS PLAT IS TRUE AND CORRECT
 AS SURVEYED ON THE GROUND
 DATE: 4-19-72

County Clerk's Certificate

I, J. H. [Name] County Clerk, Parker County, Texas, do hereby certify that the foregoing instrument was filed in my office on the _____ day of _____, 1972.

A-213