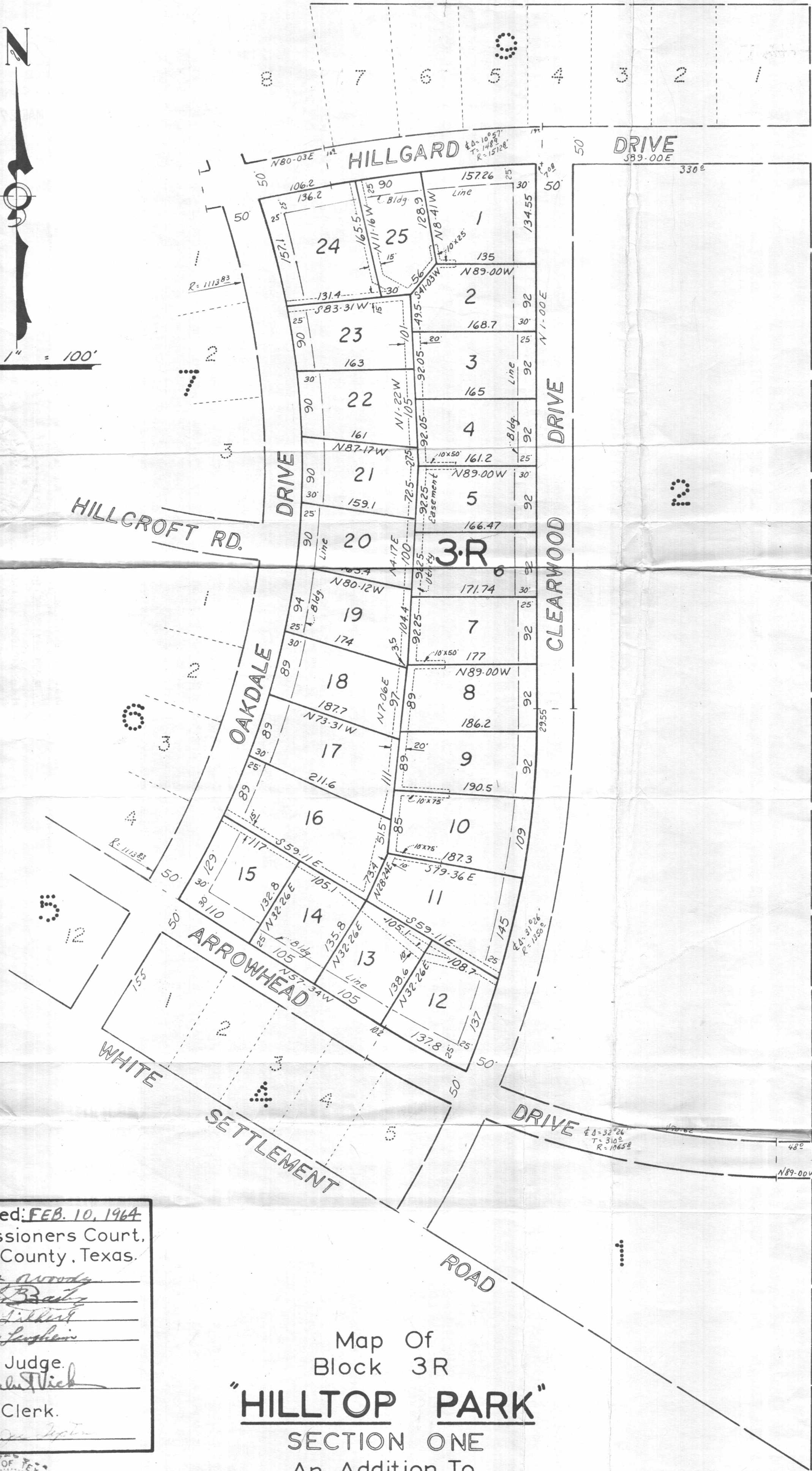




Scale 1" = 100'



Approved: FEB. 10, 1964
 Commissioners Court,
 Parker County, Texas.

Scott Moody
Charles Baatz
Louis Libbert
Pat McLaughlin

County Judge.
John Vick

County Clerk.
Thelma J. Taylor

Map Of
 Block 3R
 "HILLTOP PARK"
 SECTION ONE
 An Addition To
 MESA GRANDE VILLAGE
 PARKER COUNTY, TEXAS.
 Being a revision of Block 3



J. R. Dunaway, Certify
 this plat is true and
 correct as surveyed on
 the ground. Date: 12-16-63

Developers: Gateway Properties Inc.

J. R. DUNAWAY
 REGISTERED PUBLIC SURVEYOR #970
 1220 W. DREW ST.
 FORT WORTH, TEXAS
 WA 3-9935