

Final Plat

HILLS OF ALEDO

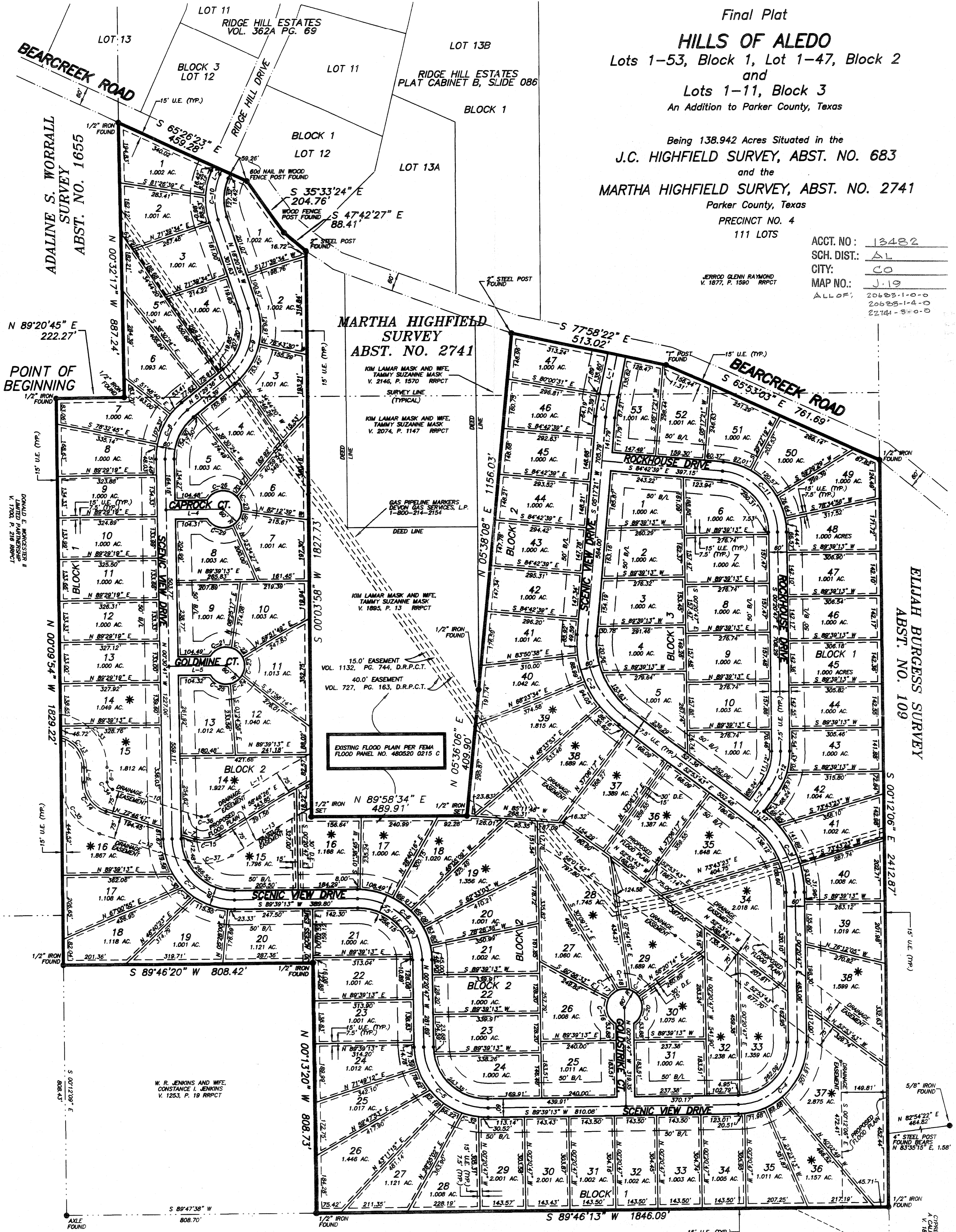
Lots 1-53, Block 1, Lot 1-47, Block 2
and
Lots 1-11, Block 3
An Addition to Parker County, Texas

Being 138.942 Acres Situated in the
J.C. HIGHFIELD SURVEY, ABST. NO. 683
and the
MARTHA HIGHFIELD SURVEY, ABST. NO. 2741
Parker County, Texas

PRECINCT NO. 4
111 LOTS

ACCT. NO.:	13482
SCH. DIST.:	AL
CITY:	CO
MAP NO.:	J-19
ALLOT:	20683-1-0-0 20683-1-4-0 22141-3-0-0

JERROD GLENN RAYMOND
V. 1877, P. 1590 RRPCT



MARTHA HIGHFIELD SURVEY
ABST. NO. 2741

I. & G.N. RR. CO. SURVEY NO. 2
BLOCK 9 ABST. NO. 1811

CYPRESS ABBEY COMPANY
A CALIFORNIA CORPORATION
V. 1457, P. 1399 RRPCT
1661.22 AC.



TEXAS GEOSPATIAL
117 John Street P.O. Box 1029
Aledo, TX 76008
817-441-6199 FAX: 817-441-6805

Doc# 595139 Fees: \$66.00
04/26/2006 9:44AM 4 Pages 1
Filed & Recorded in Official Records of
PARKER COUNTY, TEXAS