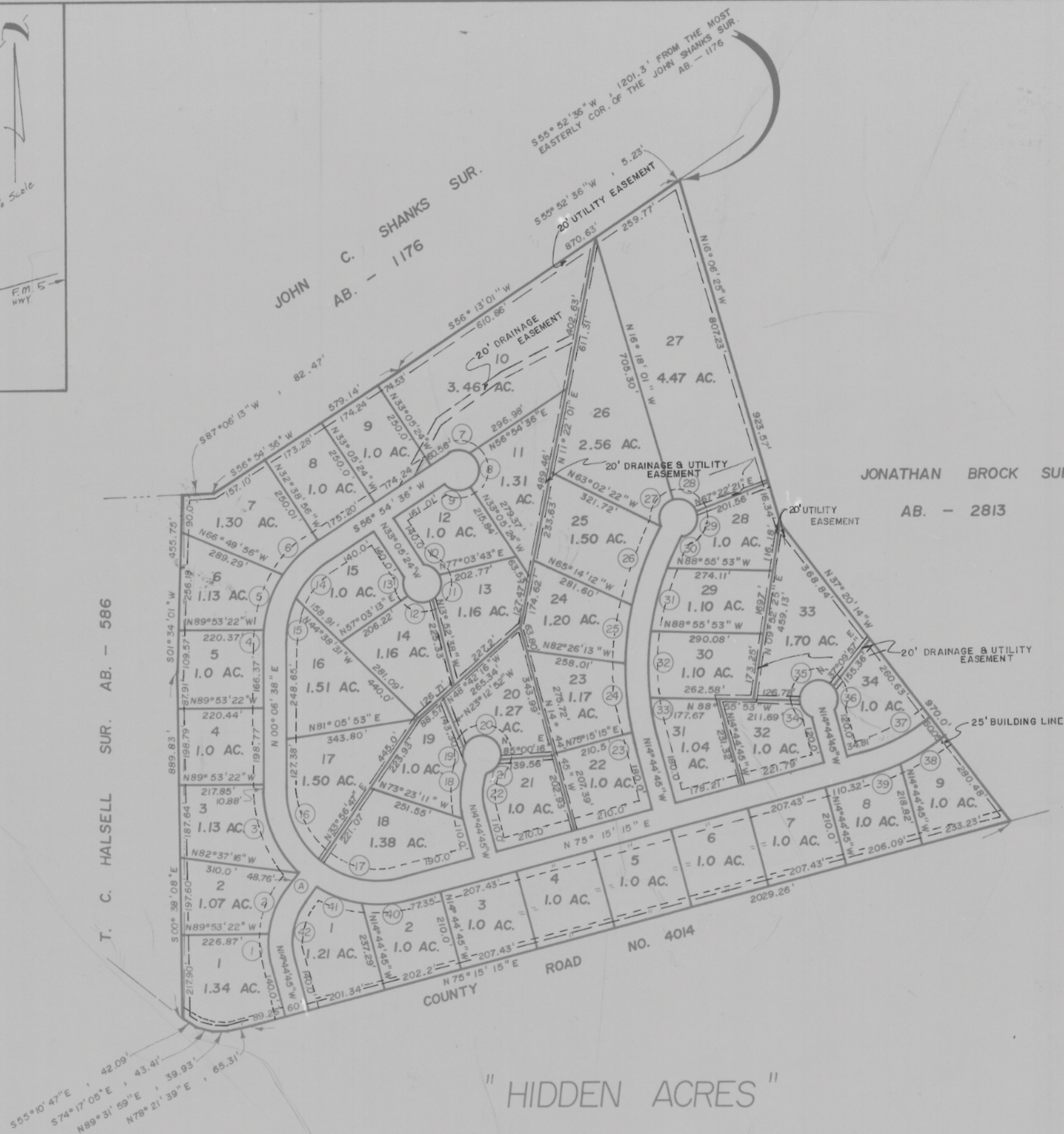


NO.	RADIUS	ARC - L	CHORD	CH. - L.
1	230.95	82.32	N04°32'05" W	81.89
2	230.95	130.97	N21°55'17" E	129.22
3	299.26	241.26	N22°59'06" W	234.78
4	307.42	31.12	N03°00'37" E	31.11
5	307.42	153.68	N20°13'51" E	152.08
6	307.42	119.97	N45°43'51" E	119.21
7	50.0	57.96	S89°52'44" E	54.77
8	50.0	99.12	S00°07'16" W	83.67
9	50.0	68.47	N83°51'30" W	63.25
10	50.0	52.36	S56°13'12" E	50.0
11	50.0	72.55	S15°20'43" W	66.35
12	50.0	72.55	N8°31'29" W	66.35
13	50.0	52.36	N09°57'35" W	50.0
14	247.42	122.64	S42°42'37" W	121.39
15	247.42	122.64	S14°18'37" W	121.39
16	239.26	216.91	S25°51'42" E	209.56
17	239.26	220.96	S78°17'23" E	213.19
18	214.66	134.88	N03°15'15" E	132.67
19	50.0	54.67	N00°33'13" W	51.99
20	50.0	142.78	S67°25'25" E	98.98
21	50.0	52.36	S44°23'03" W	50.0
22	154.66	97.18	S03°15'15" W	95.59
23	747.78	27.4	N13°41'46" E	27.4
24	747.78	180.44	N05°44'01" W	180.0
25	747.78	150.25	N06°56'07" E	150.0
26	747.78	216.16	N20°58'22" E	215.41
27	50.0	85.15	N24°54'42" E	75.23
28	50.0	73.02	S64°27'50" E	66.70
29	50.0	91.64	S29°52'42" W	79.34
30	687.78	83.10	S25°47'33" W	83.05
31	687.78	173.33	S15°06'42" W	172.87
32	687.78	171.66	S00°44'31" W	171.21
33	687.78	100.09	S10°34'37" E	100.0
34	50.0	60.17	N33°24'13" W	56.60
35	50.0	112.10	N65°17'58" E	90.06
36	50.0	77.54	S06°02'34" E	70.0
37	464.44	204.75	N62°37'28" E	203.10
38	524.44	132.09	S57°30'57" W	131.74
39	524.44	96.32	S69°59'34" W	96.18
40	299.26	128.79	S87°34'58" W	127.8
41	299.26	117.53	N68°50'16" W	116.78
42	170.95	157.88	S11°42'37" W	152.32

(A) - N38°09'59" E , 48.76'



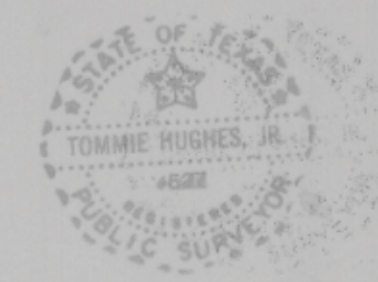
BEING A PART OF THE T. C. HALSELL SUR. AB. - 586 AND THE JONATHAN BROCK SUR. AB. - 2813
PARKER COUNTY, TEXAS

SCALE 1" = 200'

- LEGEND
- IRON PIPE
 - STEEL ROD
 - ⊗ FENCE CORNER
 - - - FENCE

HUGHES AND ASSOCIATES
LAND SURVEYING
CIVIL ENGINEERING
LAND PLANNING

111 E. COLUMBIA, SUITE E WEATHERFORD, TEXAS
OFFICE 994-5374 OR 451-7619 HOME 594-2165



I, *Tommie Hughes, Jr.* certify that this map was prepared from field notes of an actual survey made by me or under my supervision and to the best of my knowledge and belief represents said survey.

G-37

Date 3/85 No. 12,330