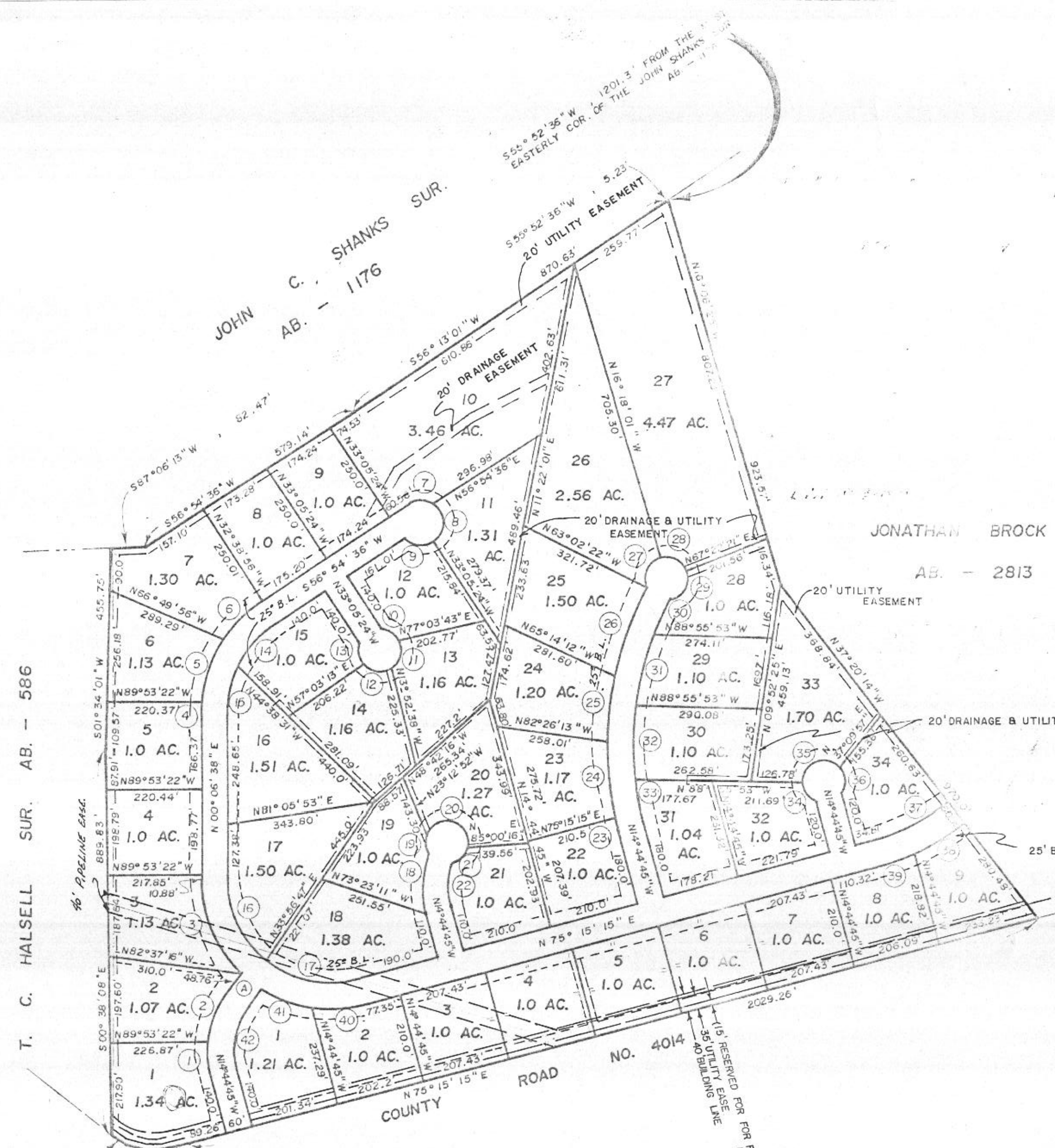


NO.	RADIUS	ARC - L	CHORD	CH. - L.
1	230.95	82.32	N04°32'05"W	81.89
2	230.95	130.97	N21°55'17"E	129.22
3	299.26	241.26	N22°59'06"W	234.78
4	307.42	31.12	N03°00'37"E	31.11
5	307.42	153.68	N20°13'51"E	152.08
6	307.42	119.97	N45°43'51"E	119.21
7	50.0	57.96	S89°52'44"E	54.77
8	50.0	99.12	S00°07'16"W	83.67
9	50.0	68.47	N83°51'30"W	63.25
10	50.0	52.36	S56°13'12"E	50.0
11	50.0	72.55	S15°20'43"W	66.35
12	50.0	72.55	N81°31'29"W	66.35
13	50.0	52.36	N09°57'35"W	50.0
14	247.42	122.64	S42°42'37"W	121.39
15	247.42	122.64	S14°18'37"W	121.39
16	239.26	216.91	S25°51'42"E	209.56
17	239.26	220.96	S78°17'23"E	213.19
18	214.66	134.88	N03°15'15"E	132.67
19	50.0	54.67	N00°33'13"W	51.99
20	50.0	142.78	S67°25'25"E	98.98
21	50.0	52.36	S44°23'03"W	50.0
22	154.66	97.18	S03°15'15"W	95.59
23	747.78	27.4	N13°41'46"W	27.4
24	747.78	180.44	N05°44'01"W	180.0
25	747.78	150.25	N06°56'07"E	150.0
26	747.78	216.16	N20°58'22"E	215.41
27	50.0	85.15	N24°54'42"E	75.23
28	50.0	73.02	S64°27'50"E	66.70
29	50.0	91.64	S29°52'42"W	79.34
30	687.78	83.10	S25°47'33"W	83.05
31	687.78	173.33	S15°06'42"W	172.87
32	687.78	171.66	S00°44'31"W	171.21
33	687.78	100.09	S10°34'37"E	100.0
34	50.0	60.17	N33°24'13"W	56.60
35	50.0	112.10	N65°17'58"E	90.06
36	50.0	77.54	S06°02'34"E	70.0
37	464.44	204.75	N62°37'28"E	203.10
38	524.44	132.09	S57°30'57"W	131.74
39	524.44	96.32	S69°59'34"W	96.18
40	299.26	128.79	S87°34'59"W	127.8
41	299.26	117.53	N68°50'16"W	116.78
42	170.95	157.88	S11°42'37"W	152.32

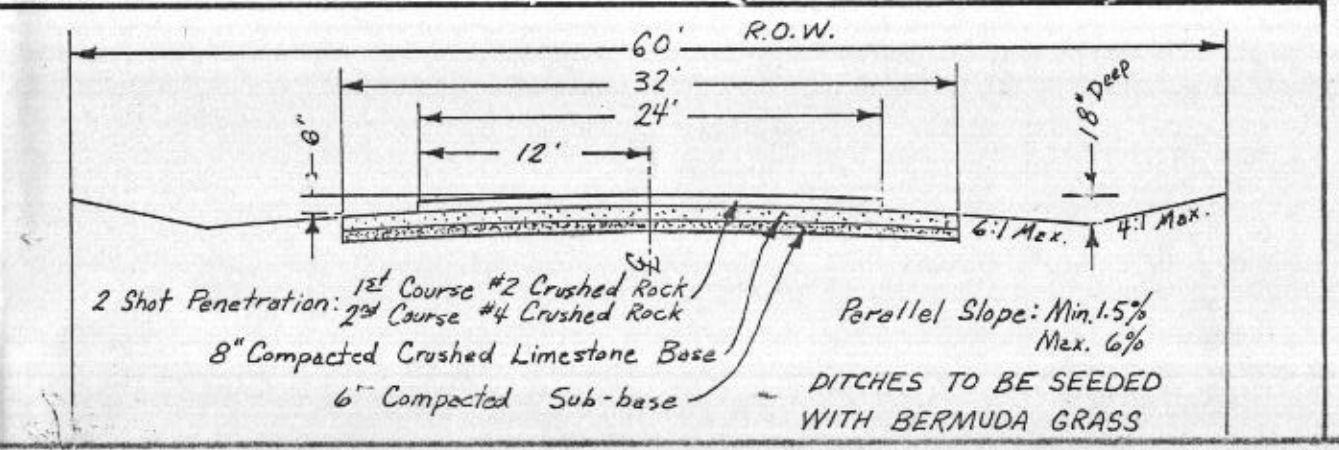


104421
 RECEIVED AND FILED
 FOR RECORD
 At 11:00 O'clock A.M.
 MAY 21 1985
 CARRIE REED, Co. Clerk
 PARKER COUNTY, TEXAS
 By [Signature] Deputy

STATE OF TEXAS COUNTY OF PARKER
 I hereby certify that this instrument was filed
 on the date and time stamped hereon by me and
 was duly recorded in the volume and page of the
 named records of Parker County as stamped here-
 on by me.
 RECORDED MAY 21 1985
 [SEAL] Carrie Reed
 County Clerk, Parker County, Tex.

SCALE 1" = 200'
 LEGEND:
 O IRON PIPE
 ● STEEL ROD
 X FENCE CORNER
 - - - - - FENCE

TYPICAL CROSS-SECTION



BEING A PART OF THE T. C. HALSELL
 SUR. AB. - 586 AND THE JONATHAN
 BROCK SUR. AB. - 2813
 PARKER COUNTY, TEXAS

A-480

HUGHES AND ASSOCIATES
 LAND SURVEYING
 CIVIL ENGINEERING
 LAND PLANNING
 111 E. COLUMBIA, SUITE E WEATHERFORD, TEXAS
 OFFICE 564-5374 OR 441-7415 HOME 5942165

I certify that this map
 was prepared from field notes of an actual survey made by me
 under my supervision and to the best of my knowledge and belief
 represents said survey.
 Date 5/25/85 No. 12,330