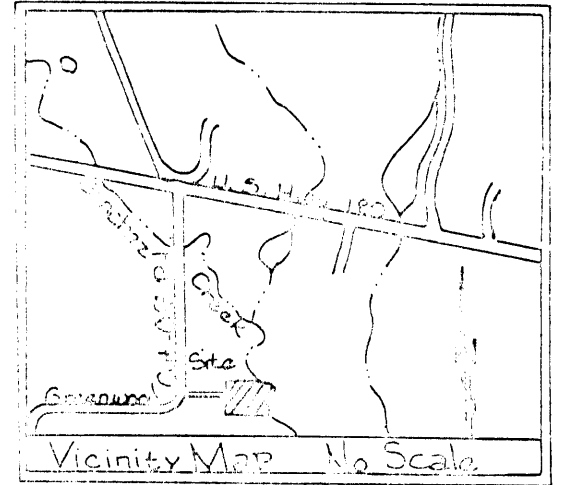


Greenwood Cut-Off Road (County Road No. 3024)

Scale in Feet (1 inch = 50 feet)

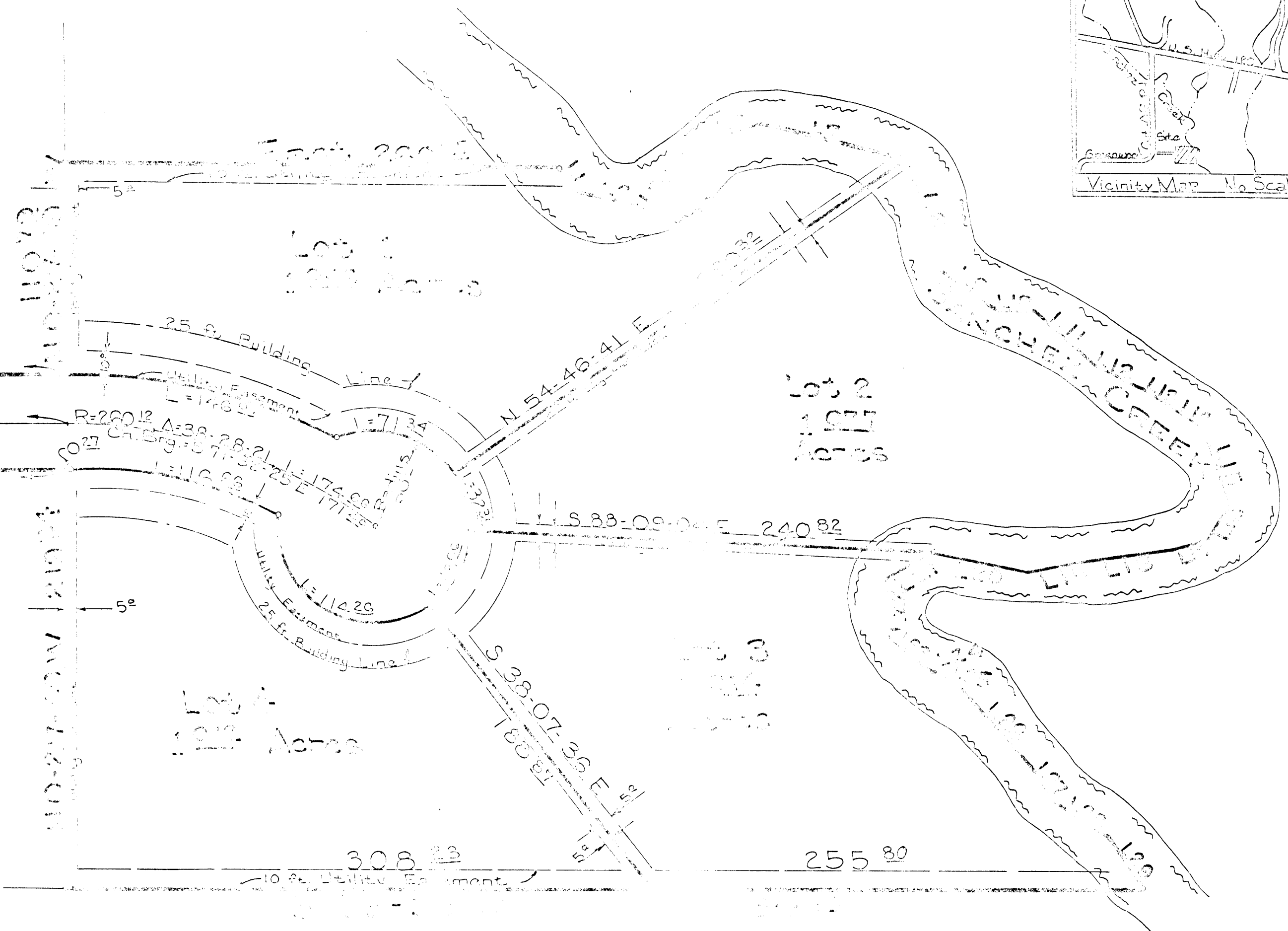
**GREENWOOD DRIVE**

A SUBDIVISION OF PART OF THE  
WILLIAM SPRANKLIN SURVEY,  
ABSTRACT NO. 1260,  
SITUATED ABOUT 2-9/10 MILES  
NORTH 33 DEGREES WEST  
FROM THE COURTHOUSE  
IN PARKER COUNTY, TEXAS.



NO. 27-49W 50E

N 89-13-25 E 400.24  
N 89-13-25 E 400.14  
**Greenwood Oaks Drive**  
S 88-15-25 E 400.24



**LINE TABLE**

1.	SOUTH	27	degrees	34	minutes	45	seconds	EAST	15-57-10	feet;
2.	SOUTH	79	degrees	24	minutes	16	seconds	EAST	36-52-100	feet;
3.	NORTH	40	degrees	17	minutes	23	seconds	EAST	17-35-100	feet;
4.	NORTH	68	degrees	11	minutes	56	seconds	EAST	11-34-100	feet;
5.	NORTH	28	degrees	00	minutes	33	seconds	EAST	19-72-100	feet;
6.	NORTH	71	degrees	31	minutes	00	seconds	EAST	39-72-100	feet;
7.	SOUTH	17	degrees	58	minutes	30	seconds	EAST	80-04-100	feet;
8.	SOUTH	13	degrees	17	minutes	38	seconds	EAST	60-23-100	feet;
9.	SOUTH	54	degrees	13	minutes	14	seconds	EAST	35-97-100	feet;
10.	NORTH	69	degrees	54	minutes	40	seconds	EAST	22-07-100	feet;
11.	SOUTH	46	degrees	19	minutes	08	seconds	EAST	42-55-100	feet;
12.	SOUTH	68	degrees	16	minutes	36	seconds	EAST	27-34-100	feet;
13.	SOUTH	54	degrees	11	minutes	26	seconds	EAST	21-13-100	feet;
14.	SOUTH	60	degrees	48	minutes	31	seconds	EAST	10-55-100	feet;
15.	SOUTH	26	degrees	15	minutes	38	seconds	EAST	41-41-100	feet;
16.	SOUTH	30	degrees	48	minutes	50	seconds	WEST	21-31-100	feet;
17.	SOUTH	71	degrees	11	minutes	11	seconds	WEST	22-73-100	feet;
18.	SOUTH	23	degrees	26	minutes	51	seconds	WEST	44-78-100	feet;
19.	SOUTH	73	degrees	8	minutes	1	seconds	WEST	10-34-100	feet;
20.	NORTH	76	degrees	41	minutes	9	seconds	WEST	51-45-100	feet;
21.	SOUTH	55	degrees	1	minutes	12	seconds	WEST	27-14-100	feet;
22.	SOUTH	40	degrees	13	minutes	14	seconds	EAST	28-21-100	feet;
23.	SOUTH	40	degrees	41	minutes	49	seconds	EAST	26-22-100	feet;
24.	SOUTH	82	degrees	21	minutes	36	seconds	EAST	10-71-100	feet;
25.	SOUTH	60	degrees	25	minutes	2	seconds	EAST	12-50-100	feet;
26.	SOUTH	41	degrees	7	minutes	12	seconds	EAST	39-15-100	feet;
27.	SOUTH	31	degrees	32	minutes	52	seconds	EAST	14-14-100	feet;
28.	SOUTH	58	degrees	41	minutes	54	seconds	EAST	21-51-100	feet;
29.	SOUTH	14	degrees	4	minutes	2	seconds	EAST	14-05-100	feet;

PC11694

GAYL HERR AND ASSOC.	
100 NORTH AVENUE BULLO #9	
DALLAS, TEXAS 75206	
TEL: 214-742-0614	
Prepared by: J. Malton	Date: 11/21/89
Drafted by: J. Malton	Job No: 88-11-124-A
Checked by: J. Malton	Sheet: 1 of 2