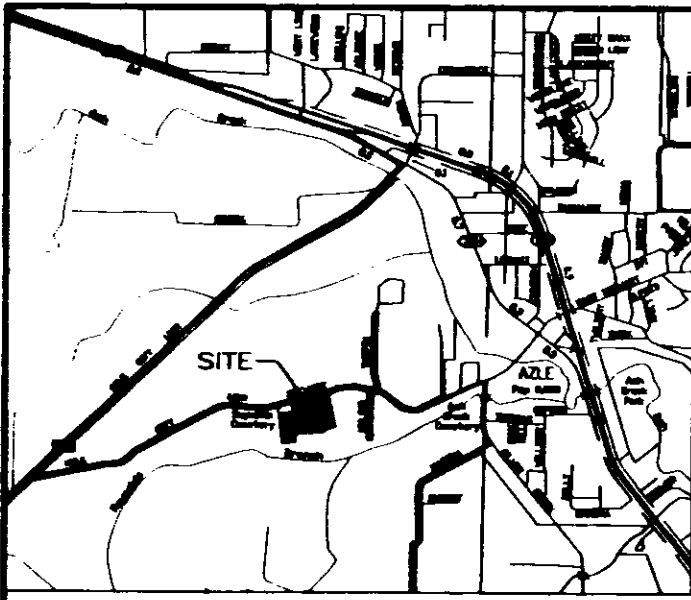
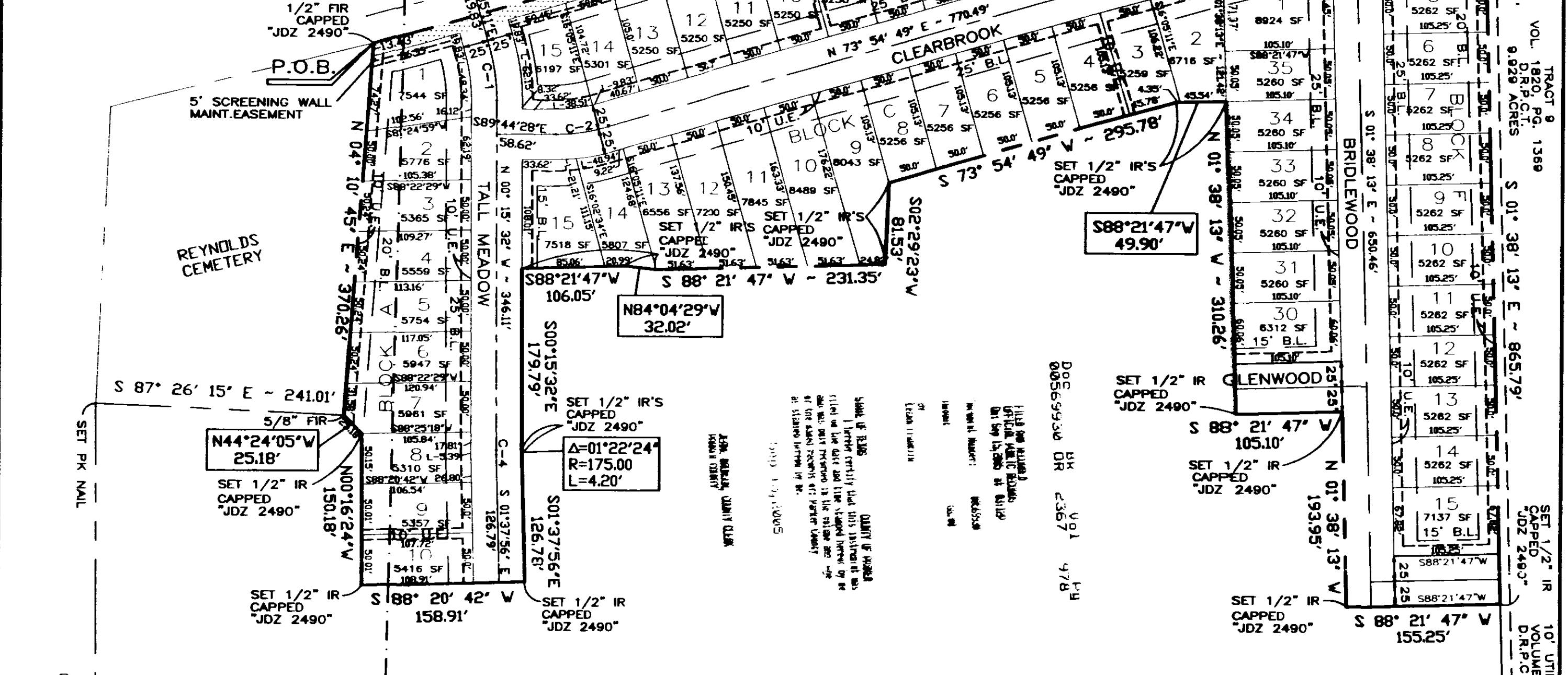
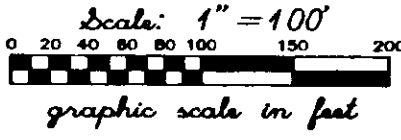


2-306



VICINITY MAP (NTS)

JAMES HAGGARD SURVEY, A-593  
J.G. REYNOLDS SURVEY, A-1127P



REYNOLDS CEMETERY

P.O.B.  
1/2" FIR CAPPED JDZ 2490"

5' SCREENING WALL MAINT. EASEMENT

5/8" FIR

SET 1/2" IR CAPPED JDZ 2490"

SET 1/2" IR CAPPED JDZ 2490"

S88°21'47"W 106.05'

S00°15'22"E 179.79'

S01°37'56"E 126.78'

S188°20'42"W 158.91'

S01°37'56"E 126.78'

S00°15'22"E 179.79'

S88°21'47"W 106.05'

S88°21'47"W 231.35'

S88°21'47"W 49.90'

S88°21'47"W 155.25'

S88°21'47"W 193.95'

S88°21'47"W 155.25'

S88°21'47"W 155.25'

S88°21'47"W 155.25'

S88°21'47"W 155.25'

S88°21'47"W 155.25'

OWNER/DEVELOPER	ENGINEER/SURVEYOR	LAND PLANNER
MKP & Associates, Inc. 1375 Gilman Road Fort Worth, Texas 76140 817-561-7949	John D. Zimmerman 908 W. Main St. Arlington, Texas 76013 817-461-0188 817-795-7880 fax	D'LO Consulting Services, Inc. Karl B. Stauss P.O. Box 515038 Dallas, Texas 75251 972-934-1088 972-247-2629 fax

QUANTITY OF WORK  
This plat shows the location of the  
utility easements and the location of the  
lots. The lots are shown as being  
of the same area as the lots shown  
on the plat of the James Haggard  
Survey, A-593, and the J.G. Reynolds  
Survey, A-1127P, as recorded in  
the deed records of Parker County,  
Texas.

PERMANENT PUBLIC UTILITY EASEMENT TO THE  
CITY OF AZLE PER VOLUME 2267, PAGE 1995, DEED

APPROX LIMIT OF 100-YEAR FLOOD PLAIN

ACCT. NO: 12797  
SCH. DIST: 36  
CITY: AZ  
MAP NO: 101

APPROX LIMIT OF 100-YEAR FLOOD PLAIN

SET 1/2" IR CAPPED JDZ 2490"

S 83° 16' 48" W ~ 260.39'

S 89° 45' 27" W ~ 309.00'

S 88° 52' 23" W 317.26'

S 88° 52' 23" W 317.26'

S 88° 52' 23" W 317.26'

S 88° 52' 23" W 317.26'

S 88° 52' 23" W 317.26'

S 88° 52' 23" W 317.26'

S 88° 52' 23" W 317.26'

S 88° 52' 23" W 317.26'



John D. Zimmerman  
4/15/2005

J. HAGGARD SURVEY A-593

E. ROWDEN SURVEY A-1845

S 89° 53' 35" W ~ 258.49'

TRACT 13  
KENNETH R. THOMAS  
VOL. 1019, PG. 263  
D.R.P.C.T.

**FINAL PLAT OF PHASE 1 GOLDEN POND ESTATES ADDITION**  
AZLE, PARKER COUNTY, TEXAS

LOTS 1-10, BLOCK A      LOTS 1-15, 30-35, BLOCK C  
LOTS 1-15, BLOCK B      LOTS 1-15, BLOCK F

BEING A 11.081 ACRE TRACT OF LAND OUT OF THE J.G. REYNOLDS SURVEY, A-1127P, AND THE JAMES HAGGARD SURVEY, A-593, AS RECORDED BY DEED IN VOLUME 2267, PAGE 1995, OF THE DEED RECORDS OF PARKER COUNTY, TEXAS

MAY 2005

CITY OF AZLE, PARKER COUNTY

CASE # Z-2004-006

SHEET 1