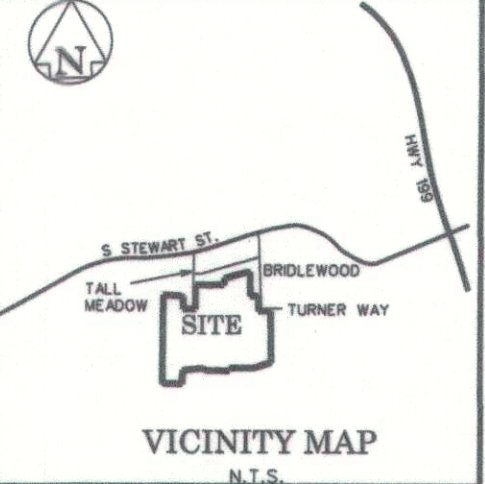


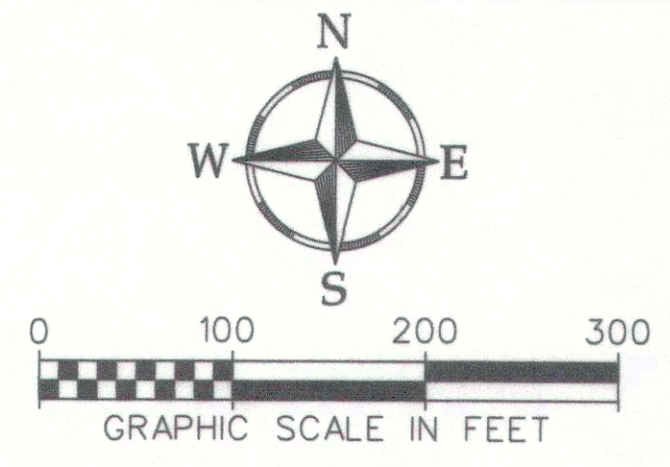
11/29/2015 11:24 AM TBP/S Firm Reg No. 10177700



201524613 PLAT Total Pages: 1

**D480 CURVE TABLE**

NO.	DELTA	RADIUS	LENGTH	BEARING	DISTANCE
C1	41° 40' 56"	200.00'	145.50'	N 70° 02' 52" W	142.31'
C2	48° 19' 04"	200.00'	168.66'	N 25° 02' 52" W	163.71'

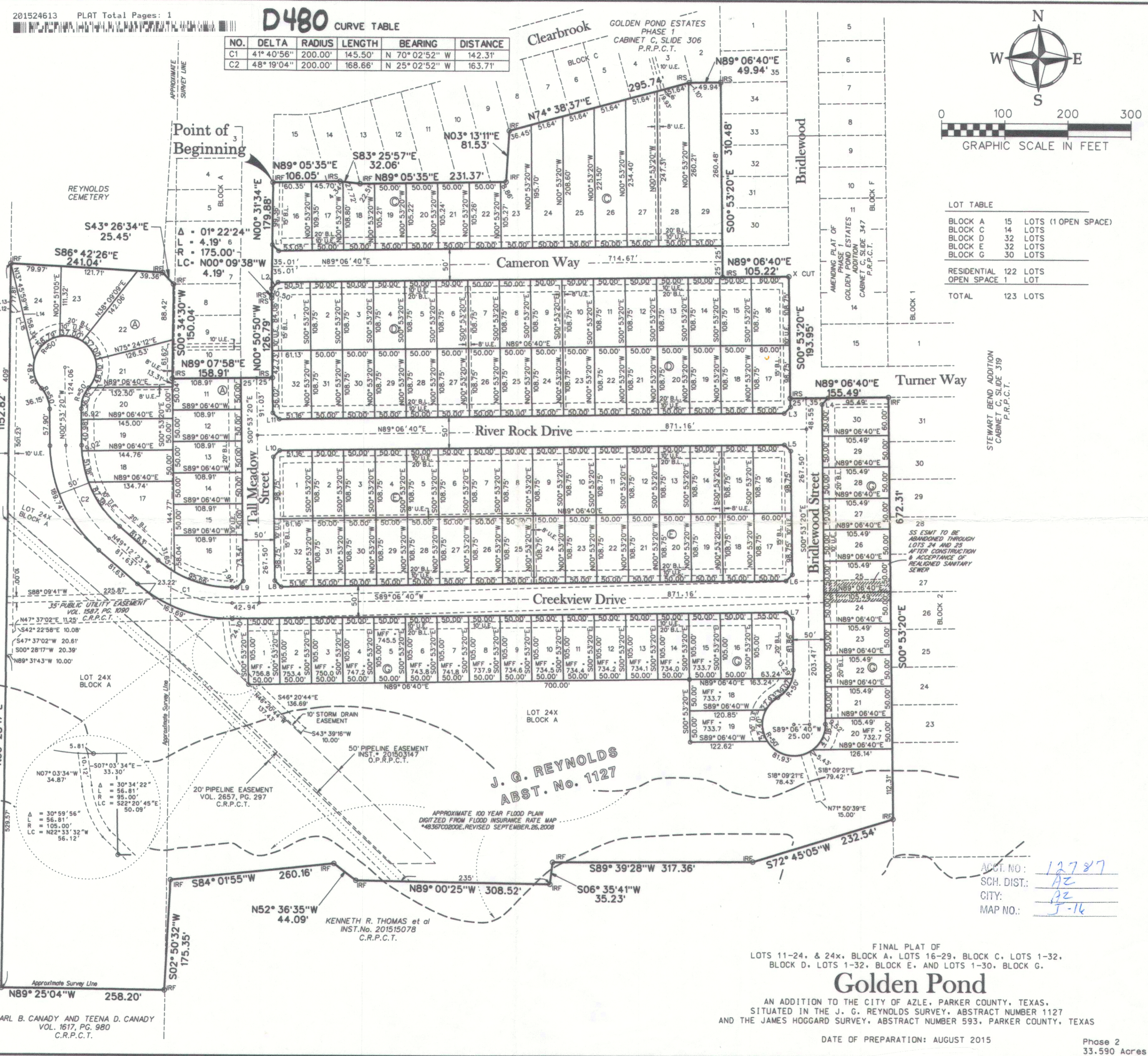


**LINE TABLE**

NO.	BEARING	DISTANCE
L1	N 45° 10' 53" W	13.97'
L2	N 44° 49' 07" E	14.32'
L3	S 44° 06' 40" W	14.14'
L4	N 44° 06' 40" E	14.14'
L5	N 45° 53' 20" W	14.14'
L6	S 44° 06' 40" W	14.14'
L7	S 45° 53' 20" E	14.14'
L8	N 45° 53' 20" W	14.14'
L9	S 44° 06' 40" W	14.14'
L10	N 44° 06' 40" E	14.14'
L11	N 45° 53' 20" W	14.14'
L12	S 89° 31' 43" E	9.17'
L13	N 76° 14' 01" E	9.75'
L14	S 13° 45' 59" E	9.97'
L15	S 76° 14' 01" W	11.42'

**LEGEND**

- IRF - IRON ROD FOUND
- IRS - IRON ROD SET
- B.L. - BUILDING LINE
- U.E. - UTILITY EASEMENT
- D.E. - DRAINAGE EASEMENT
- MFF - MINIMUM FINISHED FLOOR



**LOT TABLE**

BLOCK A	15 LOTS (1 OPEN SPACE)
BLOCK C	14 LOTS
BLOCK D	32 LOTS
BLOCK E	32 LOTS
BLOCK F	30 LOTS
BLOCK G	30 LOTS
RESIDENTIAL	122 LOTS
OPEN SPACE	1 LOT
<b>TOTAL</b>	<b>123 LOTS</b>

JAMES HOGGARD ABST. No. 593

J. G. REYNOLDS ABST. No. 1127

ROWDEN SURVEY ABST. No 1884

EARL B. CANADY AND TEENA D. CANADY VOL. 1617, PG. 980 C.R.P.C.T.

FINAL PLAT OF LOTS 11-24, & 24x, BLOCK A, LOTS 16-29, BLOCK C, LOTS 1-32, BLOCK D, LOTS 1-32, BLOCK E, AND LOTS 1-30, BLOCK G.

# Golden Pond

AN ADDITION TO THE CITY OF AZLE, PARKER COUNTY, TEXAS, SITUATED IN THE J. G. REYNOLDS SURVEY, ABSTRACT NUMBER 1127 AND THE JAMES HOGGARD SURVEY, ABSTRACT NUMBER 593, PARKER COUNTY, TEXAS

DATE OF PREPARATION: AUGUST 2015

Phase 2 33.590 Acres

10543.001-003.00 2127.00.00.00

JOB #:	DRH14009
DRAWN BY:	A. JOHNSON
CHECKED BY:	T. BRIDGES
DATE:	04-13-15
REVISIONS:	

**PELTON**  
LAND SOLUTIONS

5751 KROGER DR. STE. 185 | KELLER, TX 76244 | 817-562-3350