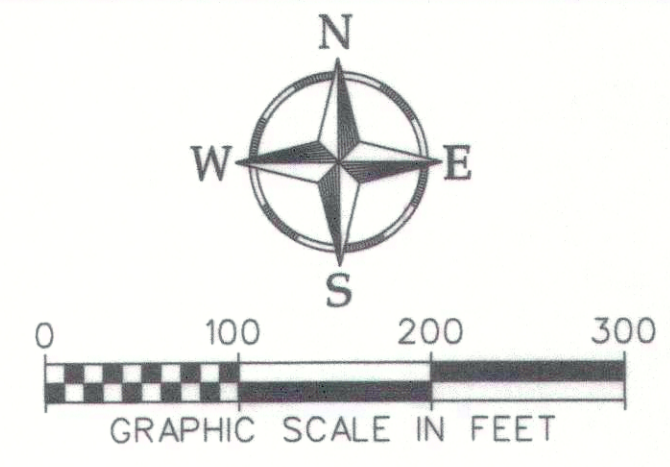


201524613 PLAT Total Pages: 1

**D480 CURVE TABLE**

| NO. | DELTA       | RADIUS  | LENGTH  | BEARING         | DISTANCE |
|-----|-------------|---------|---------|-----------------|----------|
| C1  | 41° 40' 56" | 200.00' | 145.50' | N 70° 02' 52" W | 142.31'  |
| C2  | 48° 19' 04" | 200.00' | 168.66' | N 25° 02' 52" W | 163.71'  |

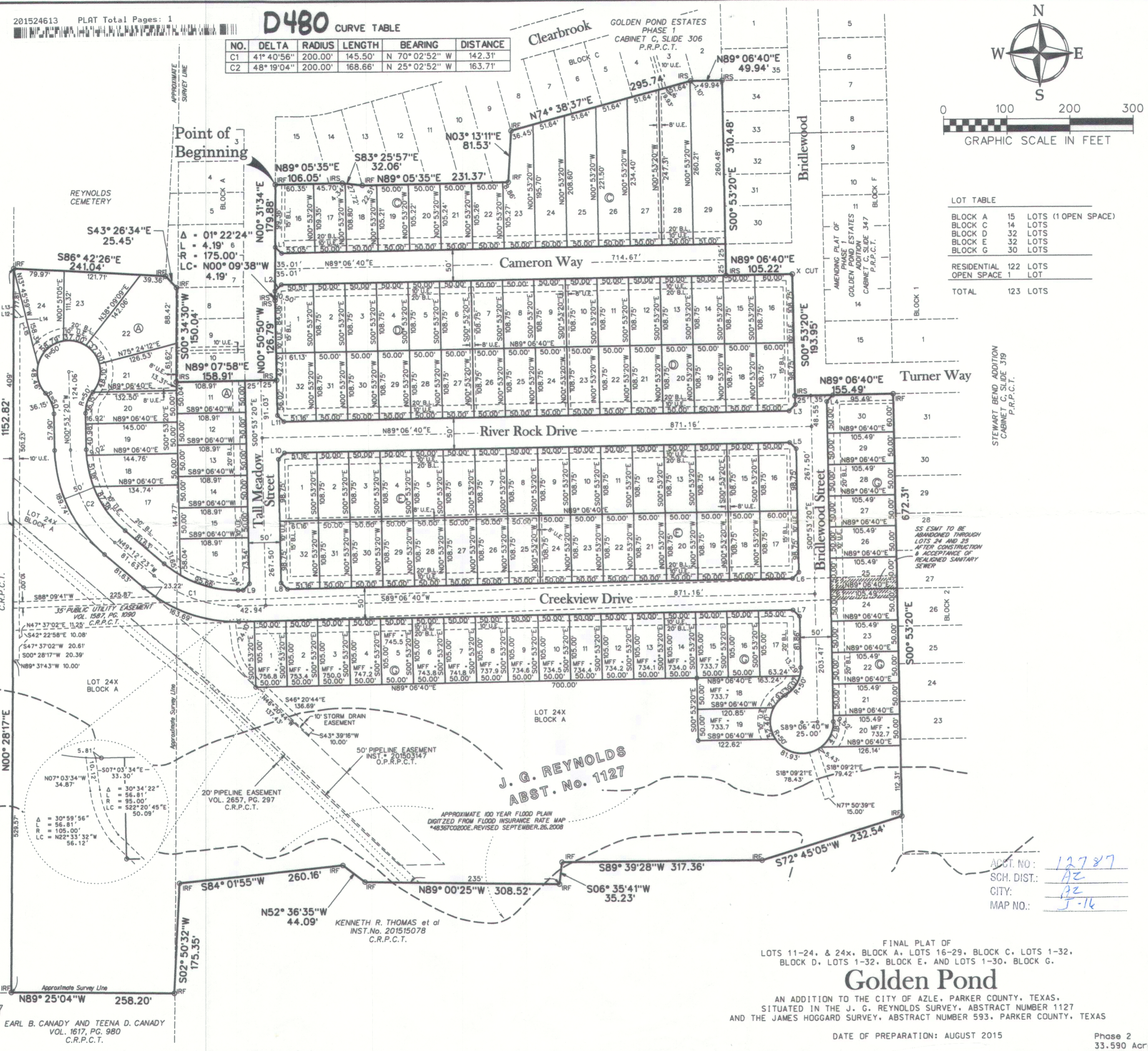


**LINE TABLE**

| NO. | BEARING         | DISTANCE |
|-----|-----------------|----------|
| L1  | N 45° 10' 53" W | 13.97'   |
| L2  | N 44° 49' 07" E | 14.32'   |
| L3  | S 44° 06' 40" W | 14.14'   |
| L4  | N 44° 06' 40" E | 14.14'   |
| L5  | N 45° 53' 20" W | 14.14'   |
| L6  | S 44° 06' 40" W | 14.14'   |
| L7  | S 45° 53' 20" E | 14.14'   |
| L8  | N 45° 53' 20" W | 14.14'   |
| L9  | S 44° 06' 40" W | 14.14'   |
| L10 | N 44° 06' 40" E | 14.14'   |
| L11 | N 45° 53' 20" W | 14.14'   |
| L12 | S 89° 31' 43" E | 9.17'    |
| L13 | N 76° 14' 01" E | 9.75'    |
| L14 | S 13° 45' 59" E | 9.97'    |
| L15 | S 76° 14' 01" W | 11.42'   |

**LEGEND**

- IRF - IRON ROD FOUND
- IRS - IRON ROD SET
- B.L. - BUILDING LINE
- U.E. - UTILITY EASEMENT
- D.E. - DRAINAGE EASEMENT
- MFF - MINIMUM FINISHED FLOOR



**LOT TABLE**

|              |            |                     |
|--------------|------------|---------------------|
| BLOCK A      | 15         | LOTS (1 OPEN SPACE) |
| BLOCK B      | 14         | LOTS                |
| BLOCK C      | 32         | LOTS                |
| BLOCK D      | 32         | LOTS                |
| BLOCK E      | 32         | LOTS                |
| BLOCK F      | 30         | LOTS                |
| RESIDENTIAL  | 122        | LOTS                |
| OPEN SPACE   | 1          | LOT                 |
| <b>TOTAL</b> | <b>123</b> | <b>LOTS</b>         |

**JAMES HOGGARD**  
ABST. No. 593

**J. G. REYNOLDS**  
ABST. No. 1127

**E ROWDEN SURVEY**  
ABST. No 1884

EARL B. CANADY AND TEENA D. CANADY  
VOL. 1617, PG. 980  
C.R.P.C.T.

FINAL PLAT OF  
LOTS 11-24, & 24x, BLOCK A, LOTS 16-29, BLOCK C, LOTS 1-32,  
BLOCK D, LOTS 1-32, BLOCK E, AND LOTS 1-30, BLOCK G.  
**Golden Pond**  
AN ADDITION TO THE CITY OF AZLE, PARKER COUNTY, TEXAS,  
SITUATED IN THE J. G. REYNOLDS SURVEY, ABSTRACT NUMBER 1127  
AND THE JAMES HOGGARD SURVEY, ABSTRACT NUMBER 593, PARKER COUNTY, TEXAS

DATE OF PREPARATION: AUGUST 2015

Phase 2  
33.590 Acres

**PELTON**  
LAND SOLUTIONS

ACCT. NO.: 12787  
SCH. DIST.: AZ  
CITY: AZ  
MAP NO.: J-14

JOB #: DRH14009  
DRAWN BY: A. JOHNSON  
CHECKED BY: T. BRIDGES  
DATE: 04-13-15  
REVISIONS:

Copyright © 2015, Peloton Land Solutions, Inc. 11/9/2015 11:23:14 AM TBPLS Firm Reg No. 10177700

5751 KROGER DR. STE. 185 | KELLER, TX 76244 | 817-562-3350