

CARPNER

PARKER COUNTY TEXAS

LOCATED ON W 1/2 OF S 1/2 OF NE 1/4 OF SECTION 321

SCALE 1" = 100 FT.
1905

I have surveyed and set corners, or parts as a correct plat

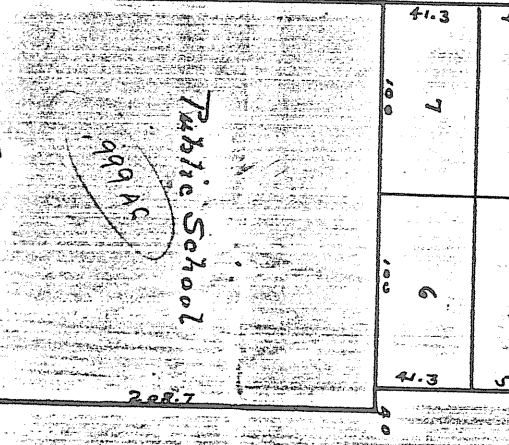
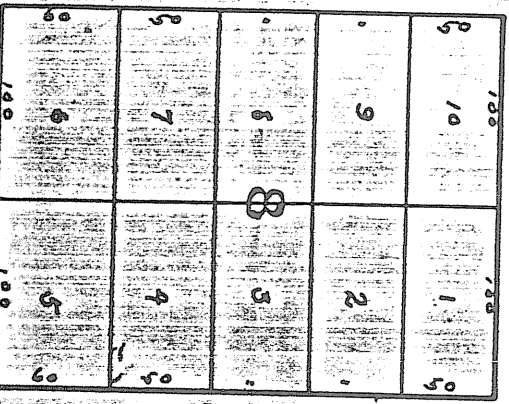
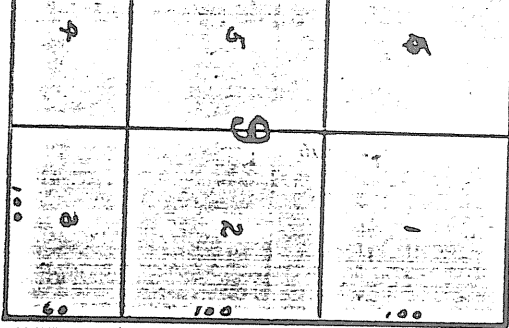
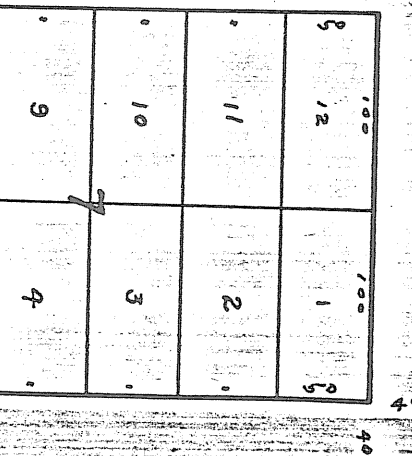
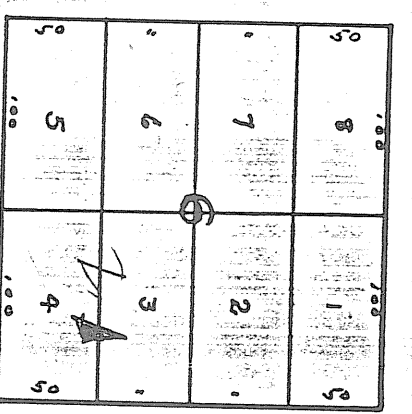
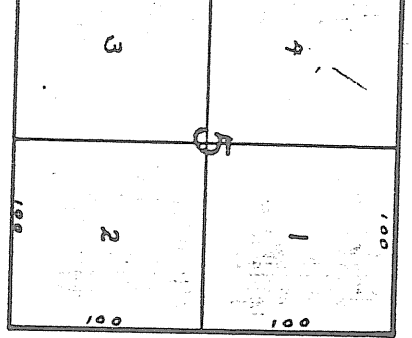
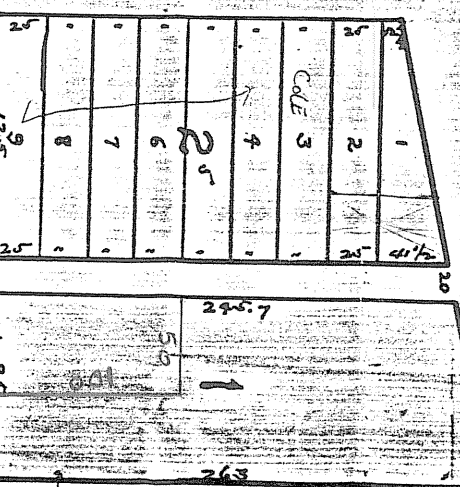
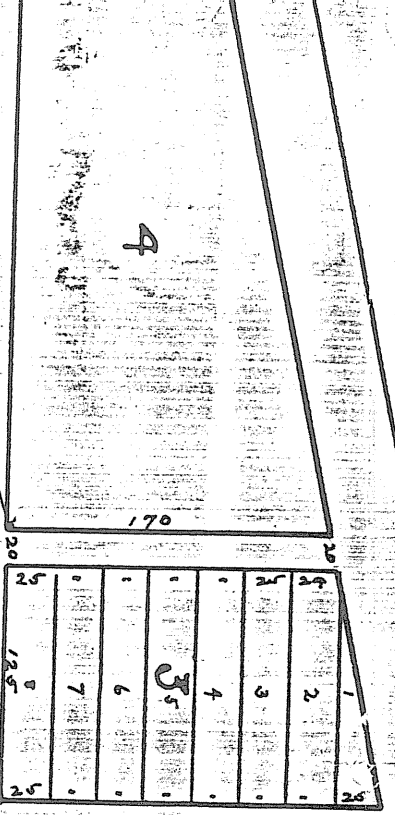
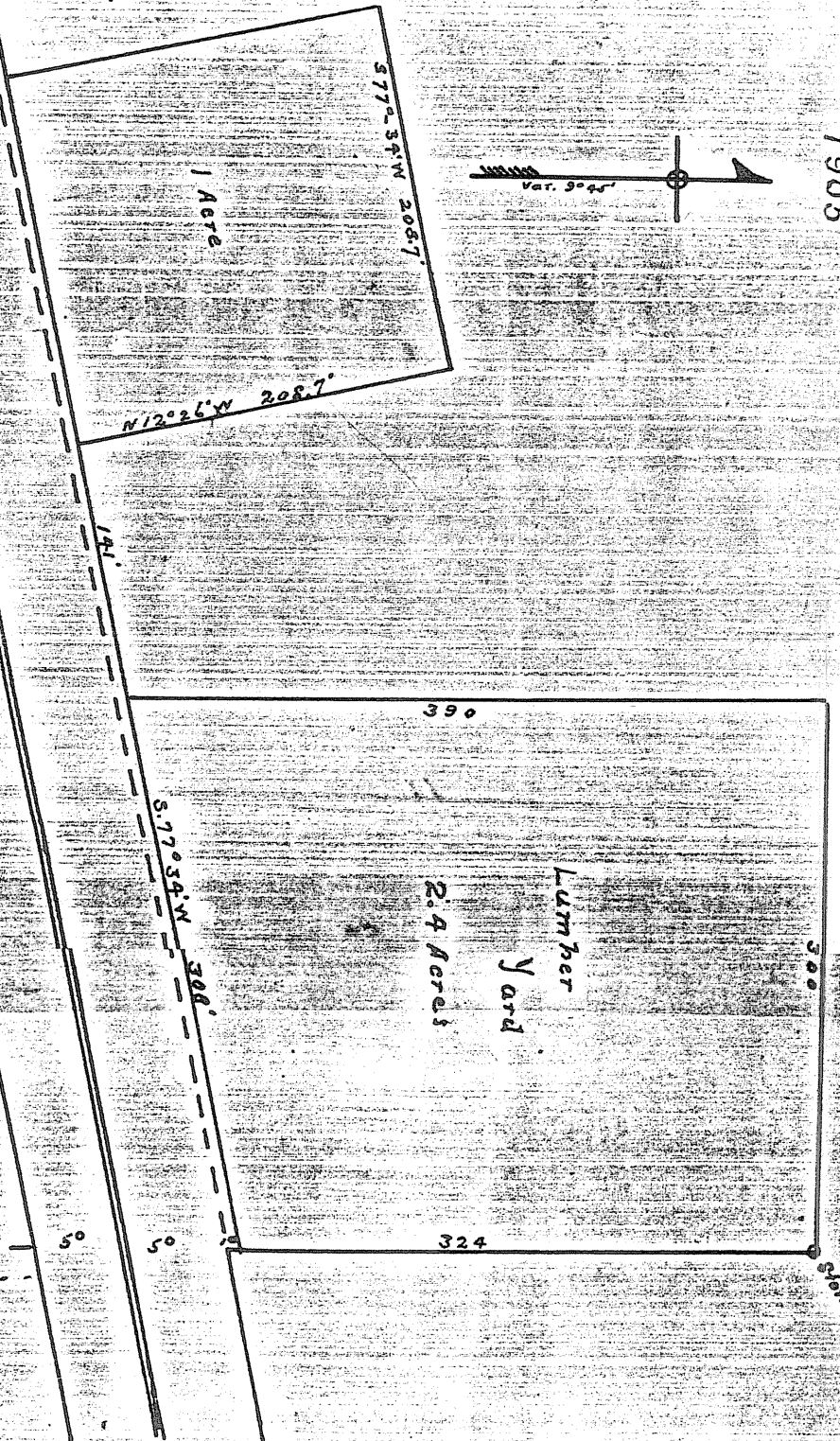
J. Myers
Surveyor

I hereby certify that this is a correct plat of the land out hereby deduced as the same

J. Myers
OWNER

before me, a Notary Public for the State of Texas, this 22nd day of 1906

Justin S. Smith
Notary Public for Texas



Public School
209 AC

148