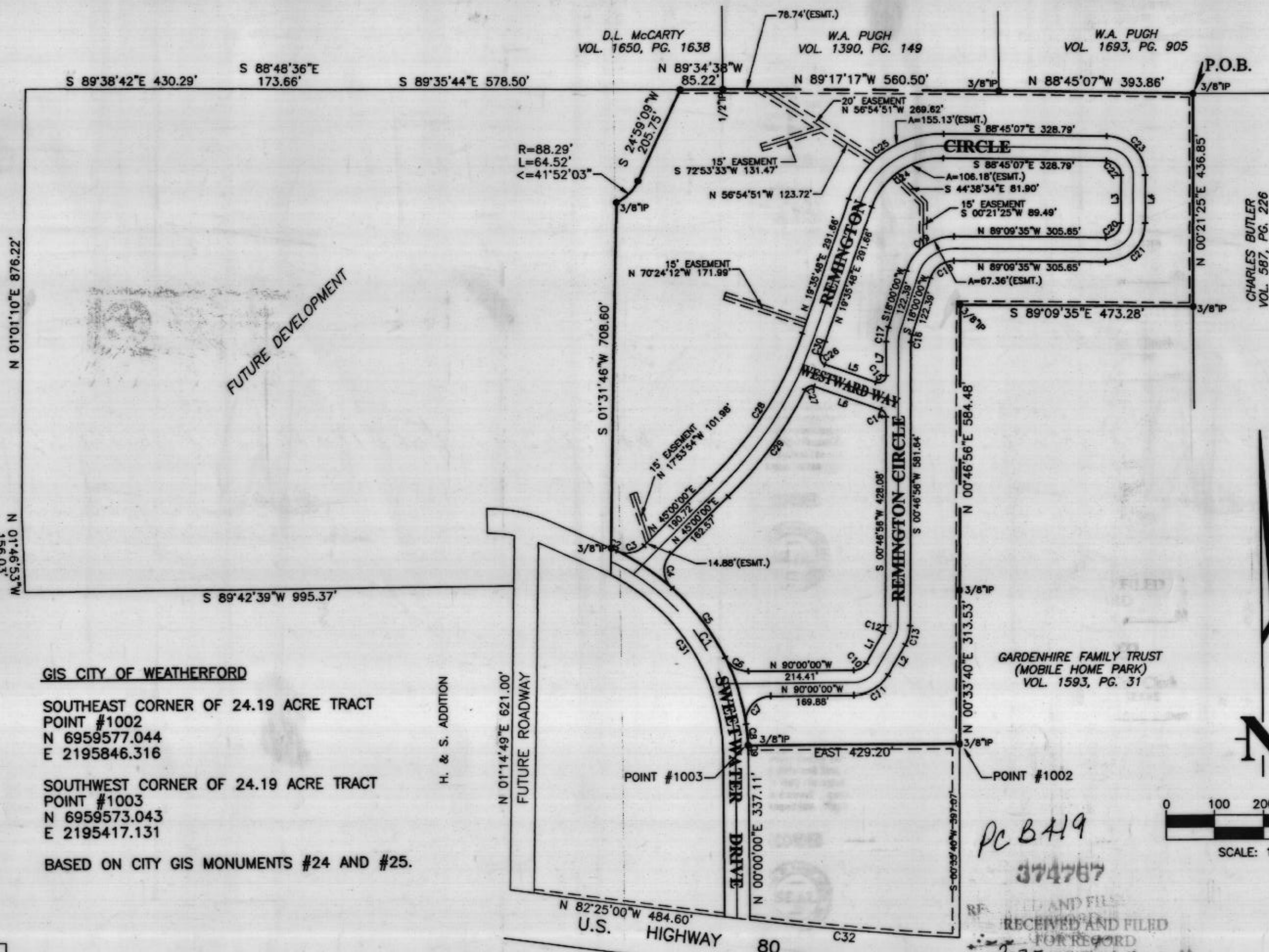


LOCATION MAP
SCALE: 1"=2000'



GIS CITY OF WEATHERFORD
 SOUTHEAST CORNER OF 24.19 ACRE TRACT
 POINT #1002
 N 6959577.044
 E 2195846.316
 SOUTHWEST CORNER OF 24.19 ACRE TRACT
 POINT #1003
 N 6959573.043
 E 2195417.131
 BASED ON CITY GIS MONUMENTS #24 AND #25.

LINE	DIRECTION	DISTANCE
L1	N30°00'00"E	71.51'
L2	N30°00'00"E	71.51'
L3	N00°21'25"E	98.10'
L4	N00°21'25"E	98.10'
L5	N70°24'12"W	111.34'
L6	N70°24'12"W	145.07'
L7	N00°46'56"E	69.04'

CURVE	RADIUS	LENGTH	TANGENT	CHORD	BEARING	DELTA
C1	466.37'	514.59'	287.02'	488.88'	N34°05'48"W	63°13'11"
C2	466.37'	12.87'	6.43'	12.87'	N64°54'59"W	01°34'50"
C3	50.00'	61.85'	35.58'	57.98'	N80°26'13"E	70°52'26"
C4	50.00'	80.40'	51.89'	72.01'	N01°03'53"W	92°07'46"
C5	466.37'	178.12'	90.16'	177.04'	N36°11'16"W	21°53'00"
C6	50.00'	56.51'	31.70'	53.55'	N57°37'23"W	64°45'14"
C7	50.00'	85.36'	57.33'	75.37'	N41°05'29"E	97°49'03"
C8	466.37'	43.39'	21.71'	43.37'	N05°09'08"W	05°19'50"
C9	466.37'	20.24'	10.12'	20.24'	N01°14'36"W	02°29'12"
C10	30.00'	31.42'	17.32'	30.00'	N60°00'00"E	60°00'00"
C11	80.00'	83.78'	46.19'	80.00'	N60°00'00"E	60°00'00"
C12	30.00'	15.30'	7.82'	15.13'	N15°23'28"E	29°13'04"
C13	80.00'	40.80'	20.85'	40.36'	N15°23'28"E	29°13'04"
C14	15.00'	18.64'	10.74'	17.46'	N34°48'38"W	71°11'08"
C15	15.00'	28.49'	20.96'	24.40'	N55°11'22"E	108°48'52"
C16	50.00'	15.03'	7.57'	14.97'	N09°23'28"E	17°13'04"
C17	100.00'	30.05'	15.14'	29.94'	N09°23'28"E	17°13'04"
C18	50.00'	63.57'	36.89'	59.37'	N54°25'13"E	72°50'25"
C19	100.00'	127.13'	73.78'	118.74'	N54°25'13"E	72°50'25"
C20	30.00'	47.38'	30.25'	42.60'	N45°35'55"E	90°29'00"
C21	80.00'	126.34'	80.68'	113.61'	N45°35'55"E	90°29'00"
C22	30.00'	46.66'	29.54'	42.10'	N44°11'51"W	89°06'32"
C23	80.00'	124.42'	78.77'	112.25'	N44°11'51"W	89°06'32"
C24	150.00'	187.58'	108.29'	175.60'	N55°25'20"E	71°39'05"
C25	200.00'	250.11'	144.38'	234.13'	N55°25'20"E	71°39'05"
C26	15.00'	24.08'	15.52'	21.57'	N24°25'08"W	91°58'09"
C27	15.00'	21.65'	13.20'	19.82'	N68°14'25"E	82°42'45"
C28	800.00'	354.70'	180.31'	351.80'	N32°17'54"E	25°24'12"
C29	850.00'	268.76'	135.51'	267.64'	N35°56'31"E	18°06'57"
C30	850.00'	29.21'	14.61'	29.21'	N20°34'52"E	01°58'09"
C31	416.37'	456.27'	254.09'	433.78'	N31°23'36"W	62°47'13"
C32	5648.65'	426.83'	213.52'	426.73'	N84°39'37"W	04°19'46"

ALL EASEMENTS SHALL BE DRAINAGE AND UTILITY EASEMENTS

BARNETT ENGINEERING, INC.
 CONSULTING ENGINEERS - PLANNERS - DESIGNERS
 P.O. Box 1485 • Mineral Wells, Texas 76068 • 940-325-9417

STATE OF TEXAS COUNTY OF PARKER
 I hereby certify that this instrument was filed on the date and time stamped herein by me and was duly recorded in the volume and page of the indexed records of Parker County as stamped herein by me.
 RECORDED 031 MAR 1999
 SEAL
 County Clerk, Parker County, TX.

RECEIVED AND FILED FOR RECORD
 2:35 PM
 NOTARY PUBLIC
 STATE OF TEXAS
 Pamela Love
 Deputy

FINAL PLAT
OF
FOX HOLLOW Ph. I
CITY OF WEATHERFORD
PARKER COUNTY, TEXAS
JANUARY, 1999

