

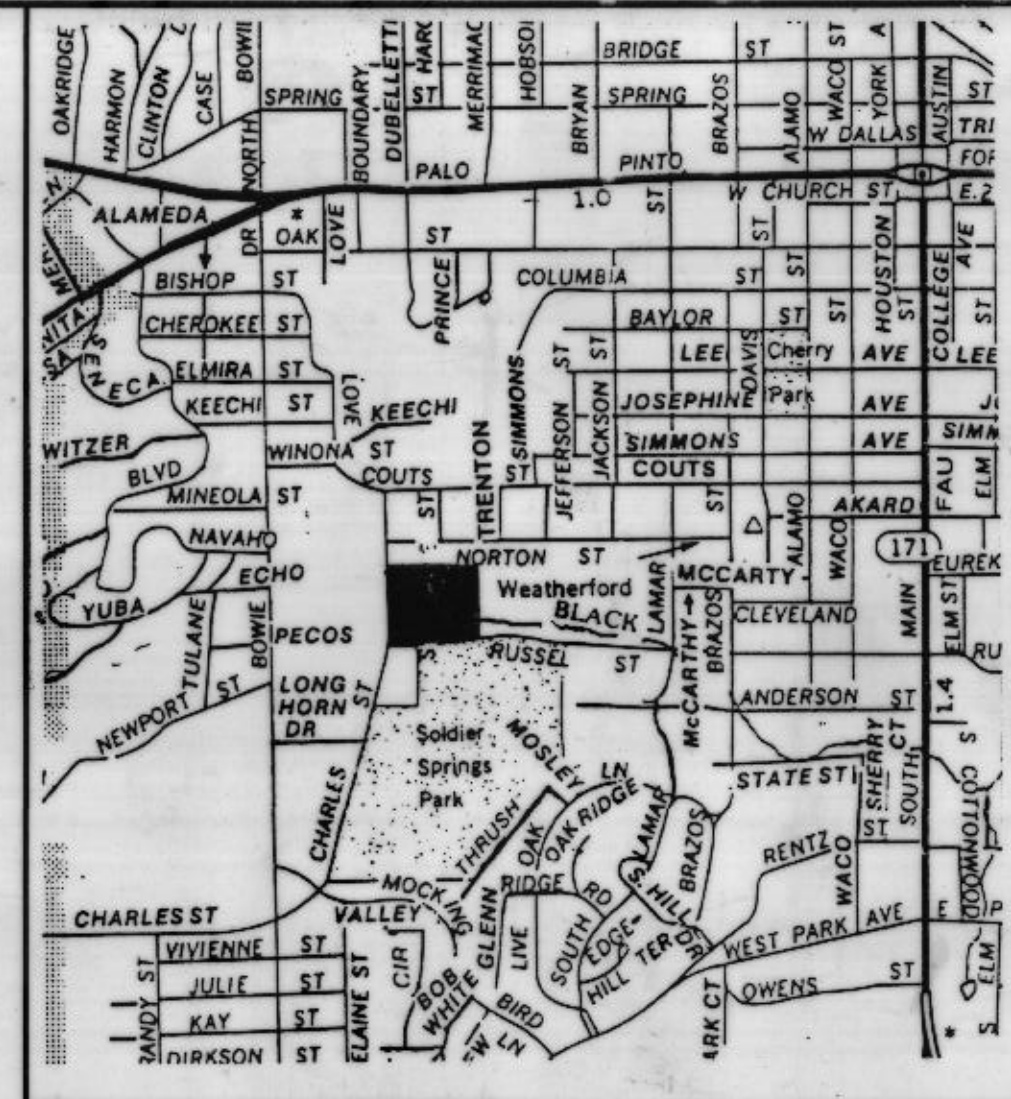
NORTON STREET

FOSSIL HILLS PHASE 1 & 2
CABINET B, PAGES 59 AND 120

Exist. 10' Drainage Easement
Exist. 15' Utility Esmt.

VOL. CRAFT, PG. 794
VOL. 12248

VOL. BORDEN, PG. 5714
VOL. 478

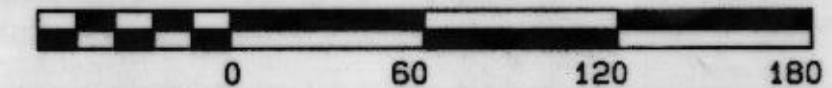


385728

STATE OF TEXAS COUNTY OF PARKER
I hereby certify that the accompanying plat was filed in the public records of this county on the date and time indicated below and that the same is a true and correct copy of the original as the same appears on the records of this county.
RECORDED FOR RECORD
3:45
APR 4 2000
RECORDED
APR 4 2000
JAMES B. BROWN, Co. Clerk
PARKER COUNTY, TEXAS
D. Brooks
County Clerk, Parker County, TX.



GRAPHIC SCALE 1"=60'



**FINAL PLAT
FOSSIL RIDGE, PHASE III**

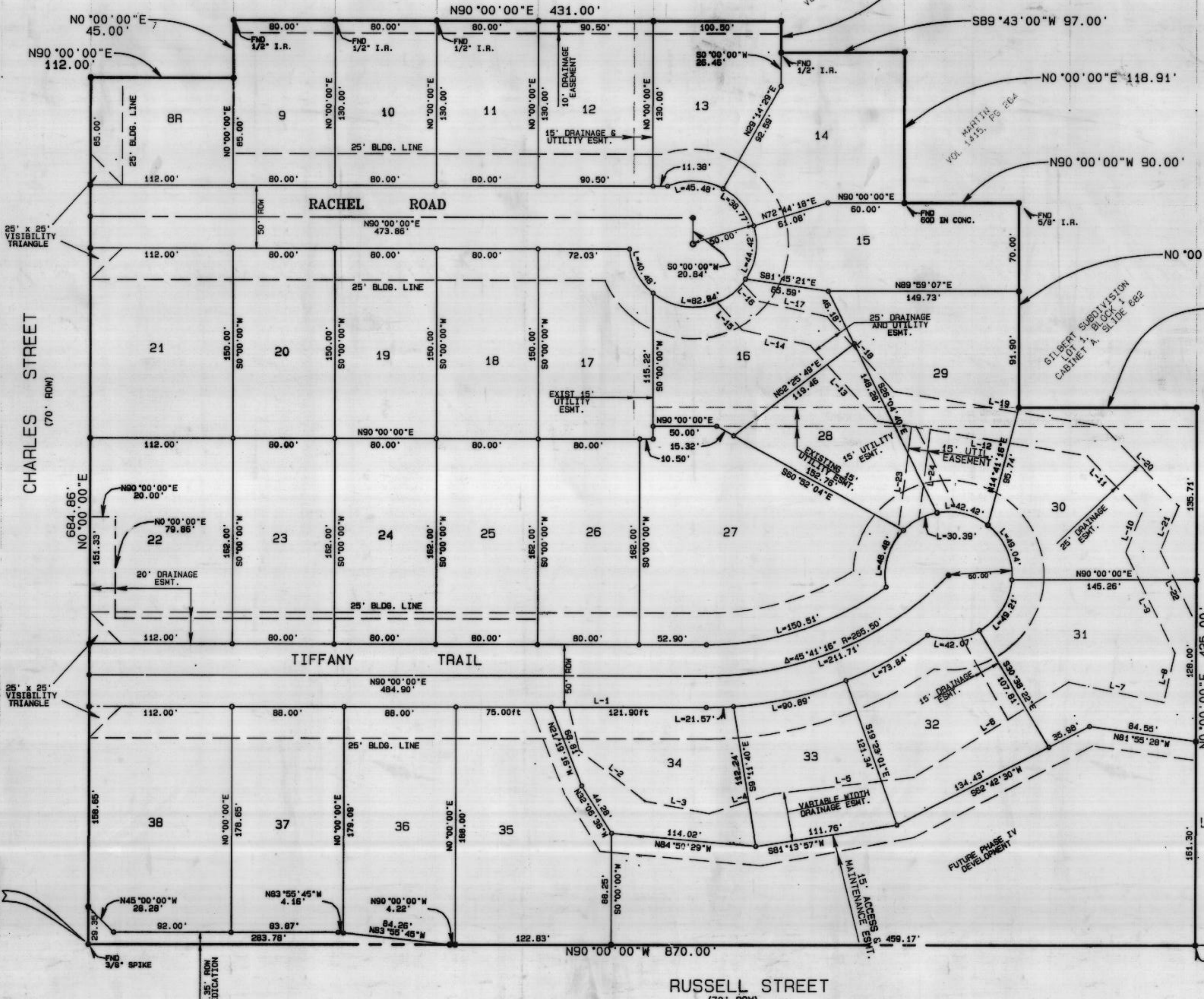
A REVISION OF BLOCKS 21, 22, 31, AND 32
COUTS ADDITION (VOLUME 7, PAGE 2-3)

AND

LOT 8, FOSSIL RIDGE PHASE II (CAB. B, SLIDE 120)
CITY OF WEATHERFORD, PARKER COUNTY, TEXAS

MARCH 1999

SHEET 1 OF 2



POINT OF BEGINNING

RUSSELL STREET
(70' ROW)