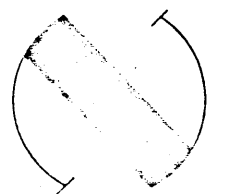
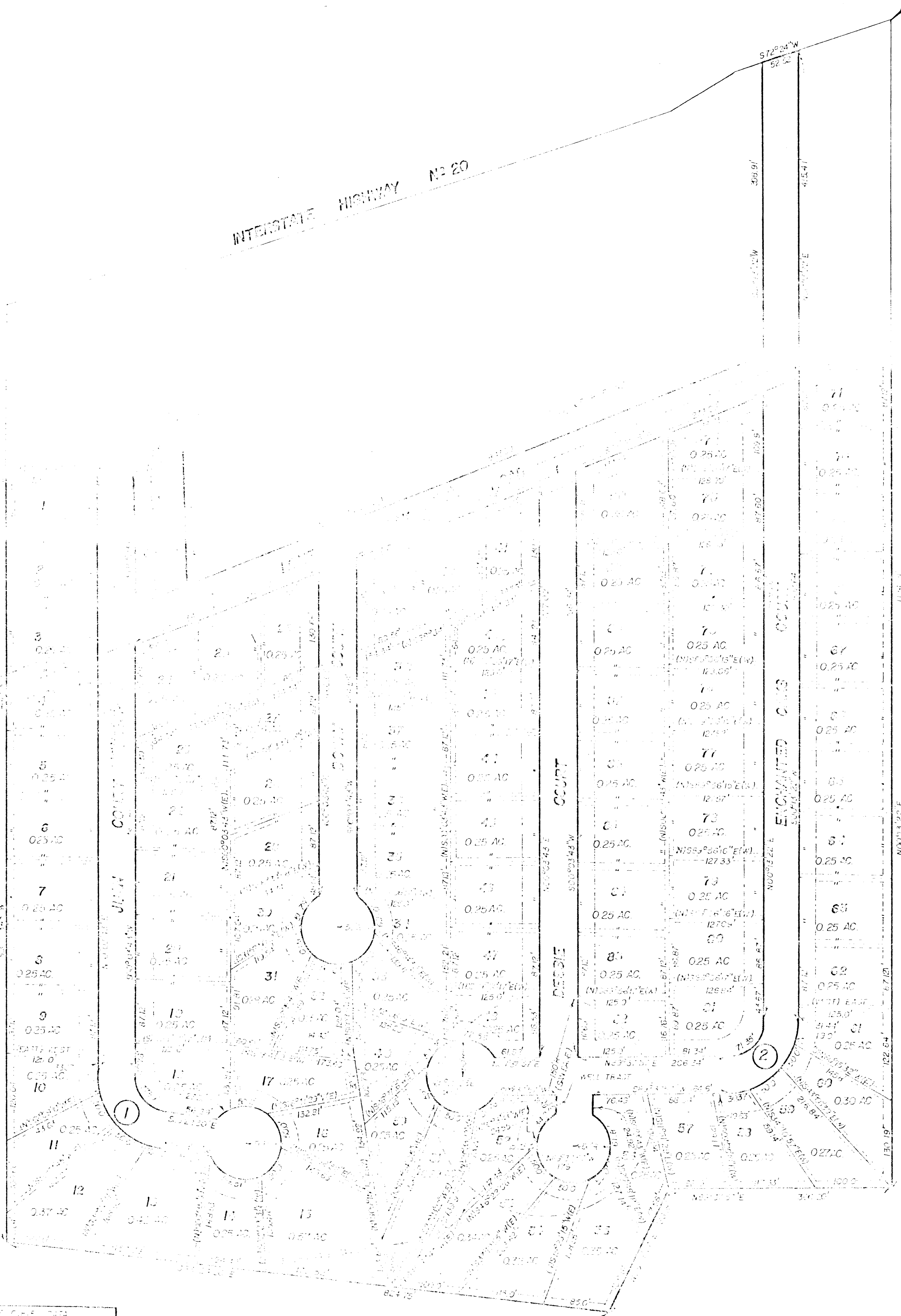


SURVEY OF
ENCHANTED OAKS SUBDIVISION
BEING A PART OF THE T.O.R. M.C. SUR. NO. 1, BLK. 3
A.D. 1913
PARKER COUNTY, TEXAS

POB - 300°11'W 931.93' B N72°25'09"E 1264.68'
FROM THE N.E. COR. OF THE C.J. EDDELMAN SUR.
AB 433.



INTERSTATE HIGHWAY NO 20



100-362A P639

SCALE
0 = 100 FT
1 = 200 FT
2 = 300 FT
3 = 400 FT
4 = 500 FT
5 = 600 FT
6 = 700 FT
7 = 800 FT
8 = 900 FT
9 = 1000 FT

NO.	DATE	BY	DATE
1	02-11-19
2	03-11-19

NOTE: ALL MEASUREMENTS ON THIS SURVEY ARE IN FEET AND INCHES.
ALL MEASUREMENTS ON THIS SURVEY ARE IN FEET AND INCHES.
ALL MEASUREMENTS ON THIS SURVEY ARE IN FEET AND INCHES.

HUGHES AND ASSOCIATES
LAND SURVEYORS
CIVIL ENGINEERS
LAW OFFICES

111 E. HICKORY STREET WEATHERFORD, TEXAS
OFFICE: 807-254-1111 OR 807-254-1112 HOME: 807-254-1113

All record page