

SURVEY OF
ENCHANTED OAKS SUBDIVISION
 BEING A PART OF THE T & P RR. CO. SUR. N^o 1, BLK. 3
 AB. 1513
 PARKER COUNTY, TEXAS

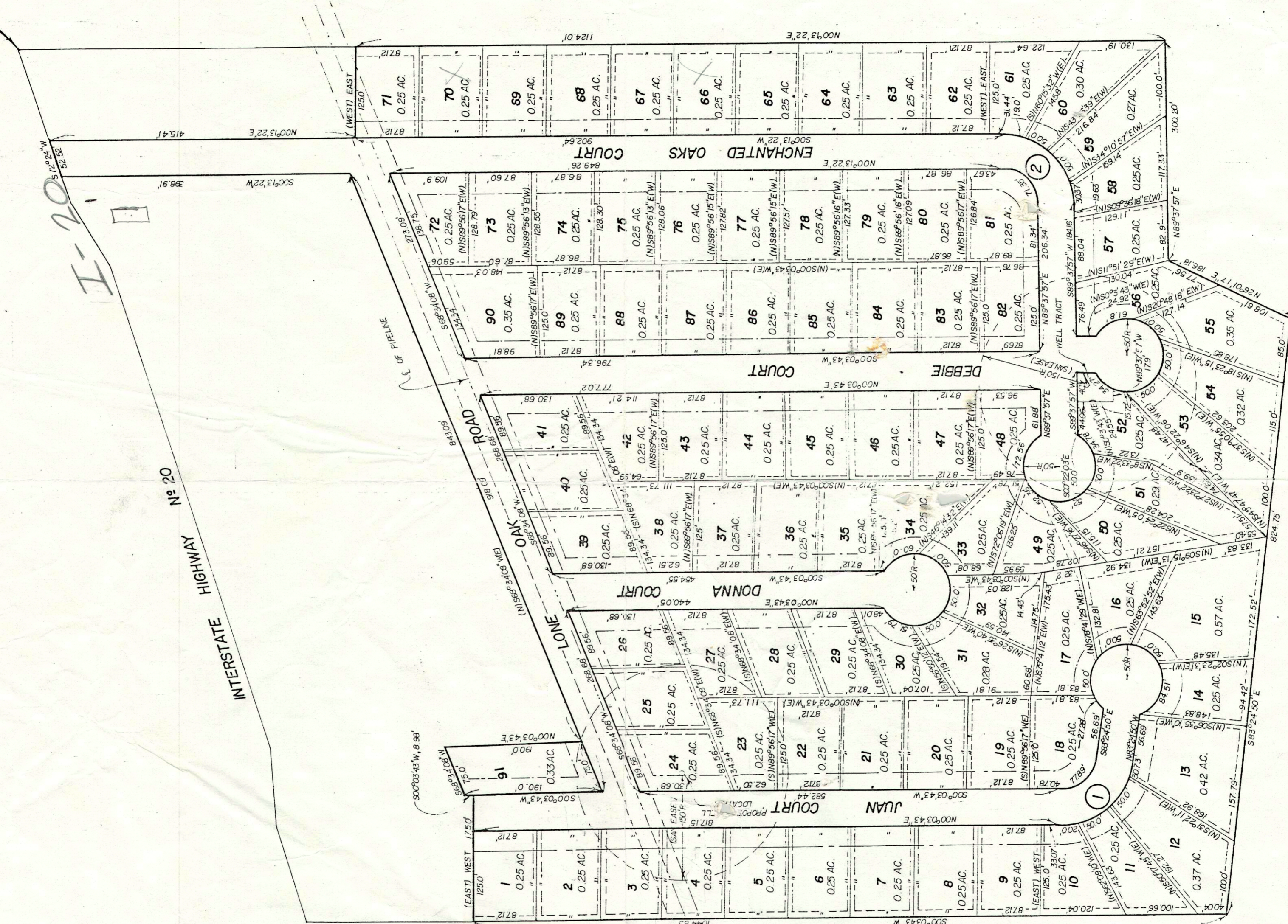
POB - 500°11'W 93.93' & N72°28'09"E 1264.68'
 FROM THE N.E. COR. OF THE C.J. EDDLEMAN SUR.
 AB. 439.

I-20

INTERSTATE HIGHWAY No. 20

POB - 500°03'43"W 227.97' & S00°11'W
 531.89' FROM THE N.E. COR. OF THE
 C.J. EDDLEMAN SUR. AB. 439.

Enchanted Oaks



| CENTERLINE CURVE DATA | | |
|-----------------------|-----------|--------|
| NO. | DELTA | RADIUS |
| 1 | 89°28'33" | 70.0' |
| 2 | 89°24'35" | 70.72' |

**NOTE: ALL UTIL. EASEMENTS ON BACK SIDE OF LOTS ARE 10'.
 ALL UTIL. EASEMENTS ON SIDE LINES OF LOTS ARE 10',
 (5' ON EACH SIDE UNLESS OTHERWISE SPECIFIED).
 ALL BUILDING LINES ARE 25'.**

SCALE 1" = 100'

LEGEND

- IRON PIPE
- STEEL ROD
- ⊗ FENCE CORNER
- ⋆ FENCE

HUGHES AND ASSOCIATES
 LAND SURVEYING
 CIVIL ENGINEERING
 LAND PLANNING
 111 E. COLUMBIA, SUITE E
 OFFICE 936.9374 OR 441.7819
 WEATHERFORD, TEXAS
 HOME 534.2183

I certify that this map was prepared from field notes of an actual survey made by me or under my supervision and to the best of my knowledge and belief represents said survey.

Date: 7-23-23