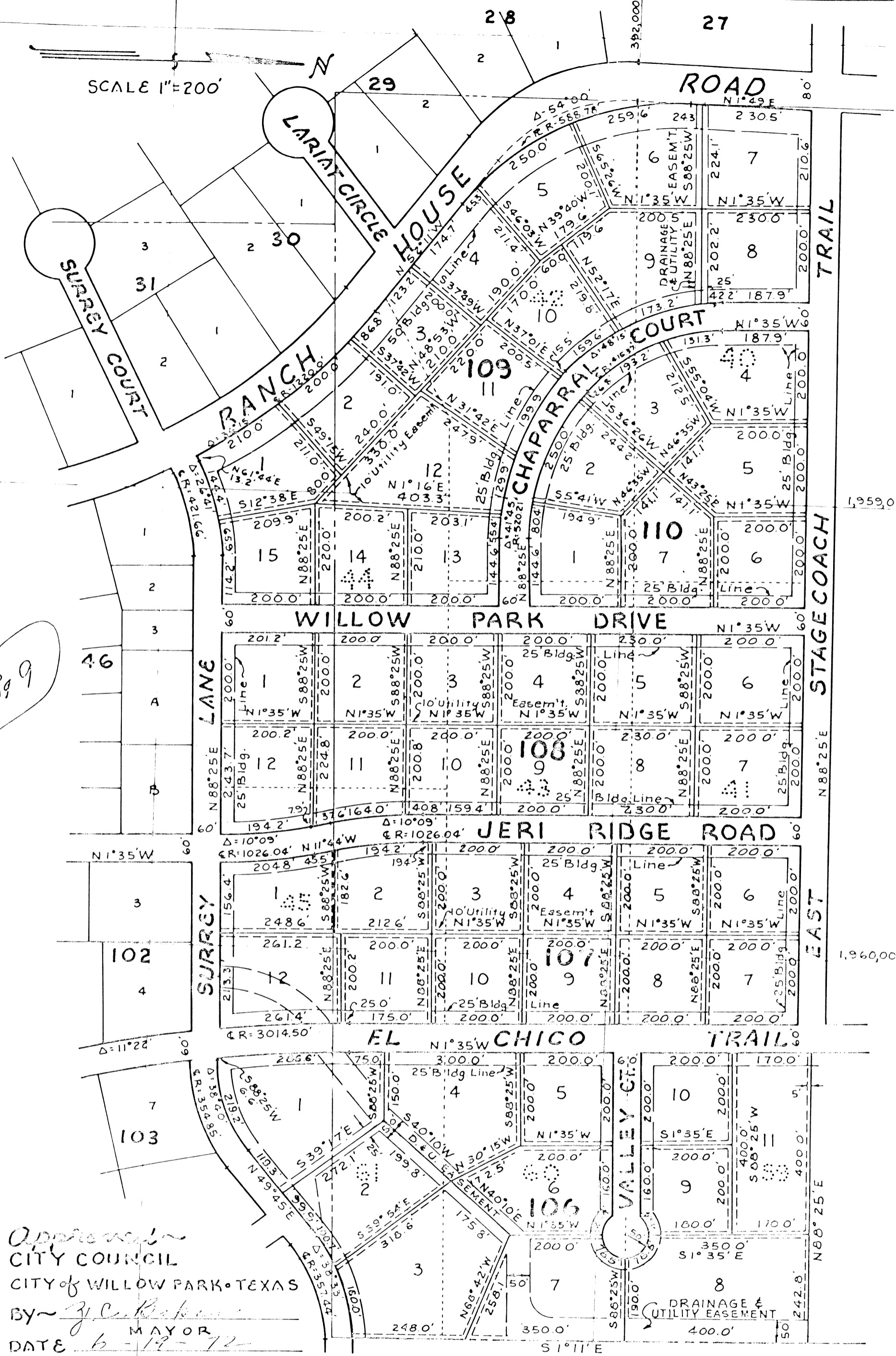


SCALE 1"=200'



Approved
 CITY COUNCIL
 CITY of WILLOW PARK, TEXAS
 BY J.C. Baker
 MAYOR
 DATE 6-19-72

LOTS 1 thru 12, BLK. 106; BLK. 107; BLK. 108; BLK. 109, AND BLK. 110.
 A REVISION OF BLK. 40, BLK. 41; BLK. 42; BLK. 43; BLK. 44;
 BLK. 45; BLK. 59; BLK. 60; AND A PART OF BLK. 61.

EL CHICO
 WILLOW PARK PARKER COUNTY, TEXAS
 SURVEYED MAY 1972 BROWN DAVIES ENGRS. FORT WORTH

NOTE - Bearings shown are NOT Lambert Grid Bearings. To convert to Lambert Grid Bearings - add 0°04' to N.E. & S.W. bearings and subtract 0°04' from N.W. & S.E. bearings.

3604 899