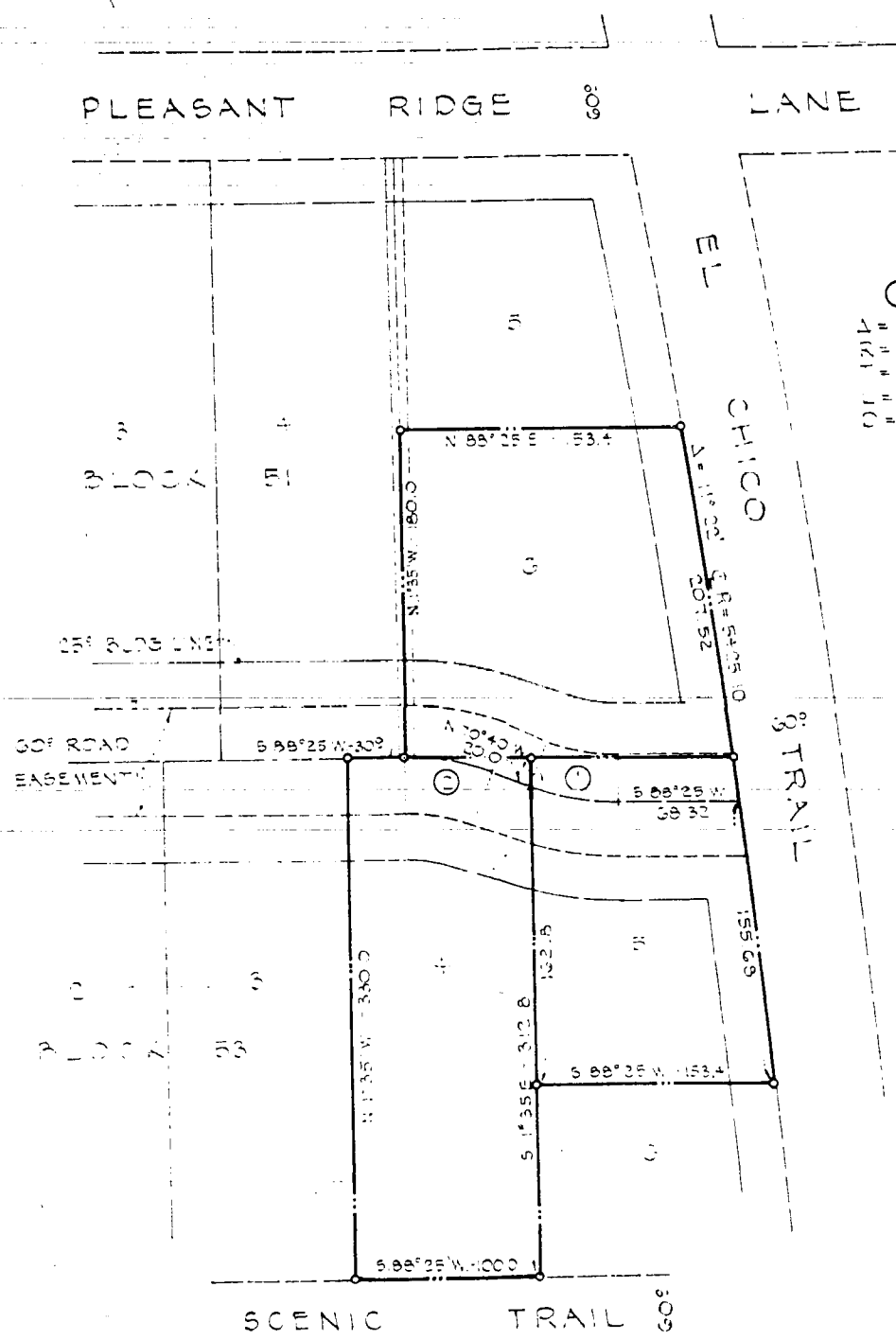


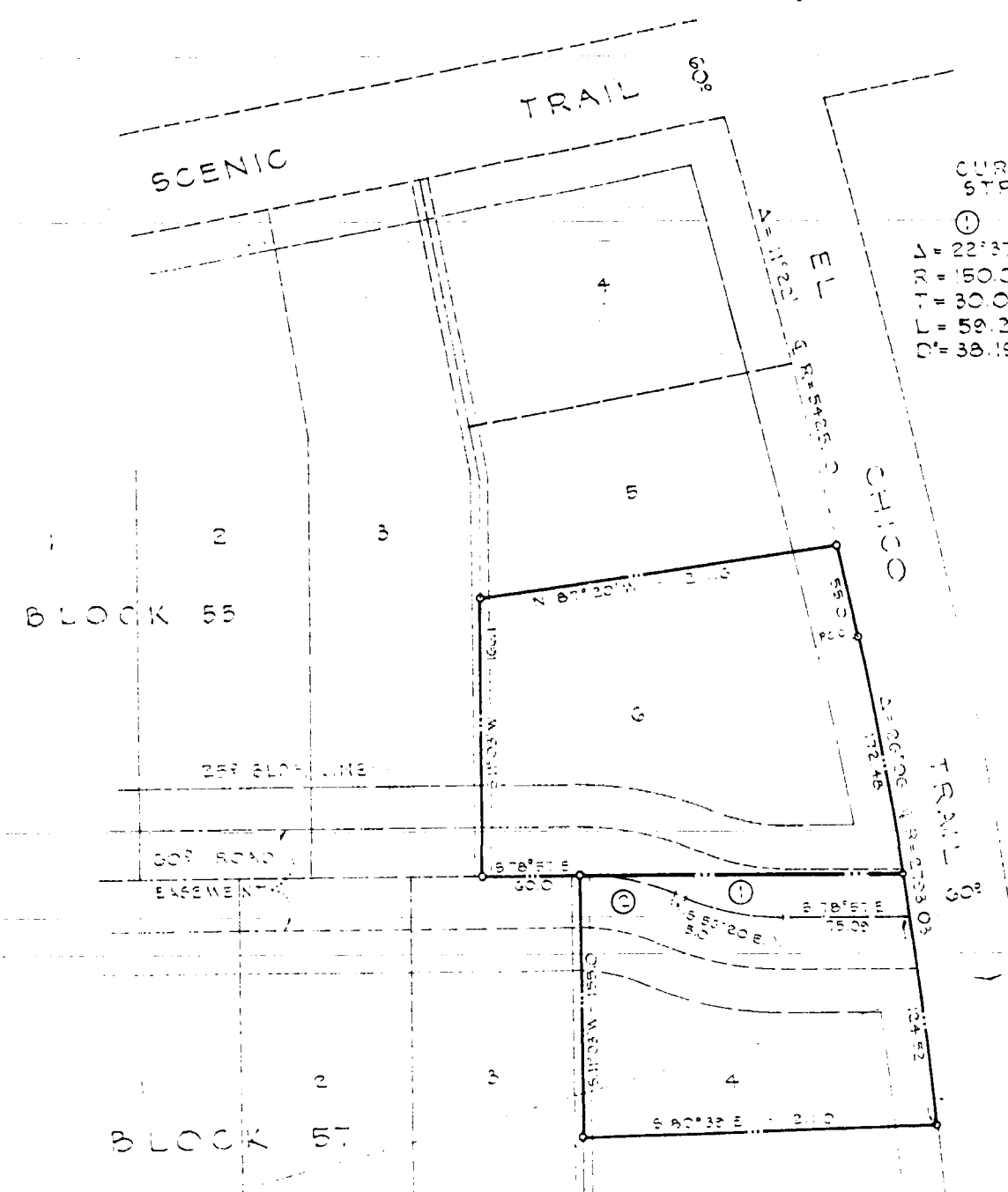
A. J. Rice
MAYOR



CURVE DATA OF ROAD EASEMENT

①	Δ = 20°55'	②	Δ = 20°55'
Δ = 20°55'	Δ = 20°55'	Δ = 20°55'	Δ = 20°55'
Δ = 20°55'	Δ = 20°55'	Δ = 20°55'	Δ = 20°55'
Δ = 20°55'	Δ = 20°55'	Δ = 20°55'	Δ = 20°55'
Δ = 20°55'	Δ = 20°55'	Δ = 20°55'	Δ = 20°55'
Δ = 20°55'	Δ = 20°55'	Δ = 20°55'	Δ = 20°55'
Δ = 20°55'	Δ = 20°55'	Δ = 20°55'	Δ = 20°55'
Δ = 20°55'	Δ = 20°55'	Δ = 20°55'	Δ = 20°55'
Δ = 20°55'	Δ = 20°55'	Δ = 20°55'	Δ = 20°55'
Δ = 20°55'	Δ = 20°55'	Δ = 20°55'	Δ = 20°55'

SCALE 1" = 100'



CURVE DATA OF STREET EASEMENT

①	Δ = 22°37'	②	Δ = 22°37'
Δ = 22°37'	Δ = 22°37'	Δ = 22°37'	Δ = 22°37'
Δ = 22°37'	Δ = 22°37'	Δ = 22°37'	Δ = 22°37'
Δ = 22°37'	Δ = 22°37'	Δ = 22°37'	Δ = 22°37'
Δ = 22°37'	Δ = 22°37'	Δ = 22°37'	Δ = 22°37'
Δ = 22°37'	Δ = 22°37'	Δ = 22°37'	Δ = 22°37'
Δ = 22°37'	Δ = 22°37'	Δ = 22°37'	Δ = 22°37'
Δ = 22°37'	Δ = 22°37'	Δ = 22°37'	Δ = 22°37'
Δ = 22°37'	Δ = 22°37'	Δ = 22°37'	Δ = 22°37'
Δ = 22°37'	Δ = 22°37'	Δ = 22°37'	Δ = 22°37'

SCALE 1" = 100'

PLAT SHOWING
A REVISION OF A
60' ROAD EASEMENT IN
LOT 6, BLOCK 57 & LOTS 4, 5, BLOCK 55
EL CHICO
PARKER COUNTY, TEXAS

THIS PLAT REPRESENTS A SURVEY MADE
ON THE GROUND DURING THE MONTH OF
NOVEMBER, 1977

Ben R. Sturget
BEN R. STURGET, REG. PUBLIC SURVEYOR
NO. 590, STATE OF TEXAS

PLAT SHOWING
A REVISION OF A
60' ROAD EASEMENT IN
LOT 6, BLOCK 55 & LOT 4, BLOCK 57
EL CHICO
PARKER COUNTY, TEXAS

STURGET ENGINEERING - SURVEYING, INC.
8035 TOWNSEND DRIVE FORT WORTH, TEXAS 76116
923-7781