

24847

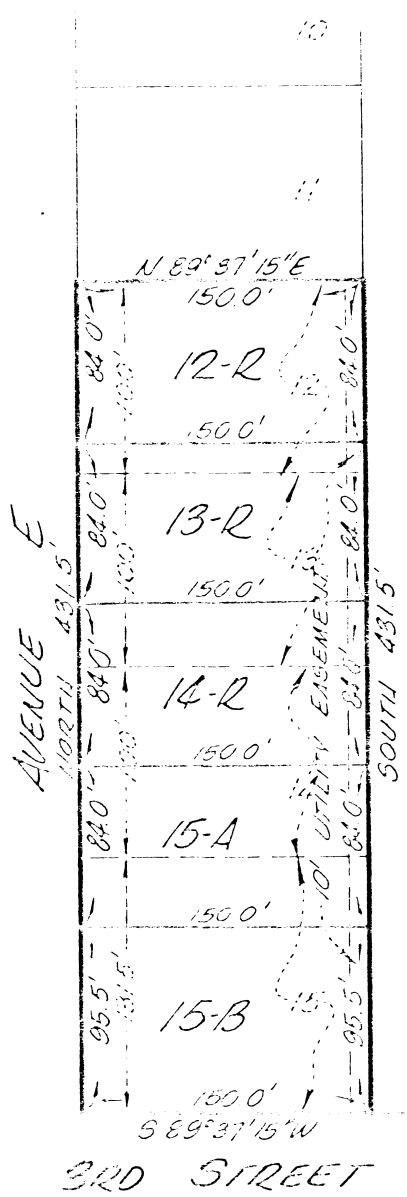
RECEIVED AND FILED  
FOR RECORD  
At 1:30 O'Clock P.M.

AUG 13 1980

CARRIE REED, Co. Clerk  
PARKER COUNTY, TEXAS

By *J.M.* Deputy

10.0000



STATE OF TEXAS COUNTY OF PARKER  
I hereby certify that this instrument was filed  
on the date and time stamped hereon by me and  
was duly recorded in the volume and page of the  
named records of Parker County as stamped here-  
on by me.

RECORDED AUG 13 1980



*Carrie Reed*  
County Clerk, Parker County, Tex.

PLAT SHOWING  
LOTS 12-R, 13-R, 14-R, 15-A, & 15-B,  
EASTVIEW ADDITION  
SPRINGTOWN, PARKER COUNTY,  
TEXAS  
BEING A REVISION OF LOTS 12, 13, 14, & 15, SAID  
EASTVIEW ADDITION, AS SHOWN ON PLAT THEREOF  
IN VOL. 295, PG 1, PLAT RECORDS, PARKER COUNTY

RECEIVED *July 31* 1980  
COUNTY CLERK, TEXAS

Prepared from survey made of the  
ground, in accordance with the

*Mary [unclear]*  
*[unclear]*

*July 31 1980*  
*[unclear]*

Fort Worth, Texas 76107  
17-334-4311