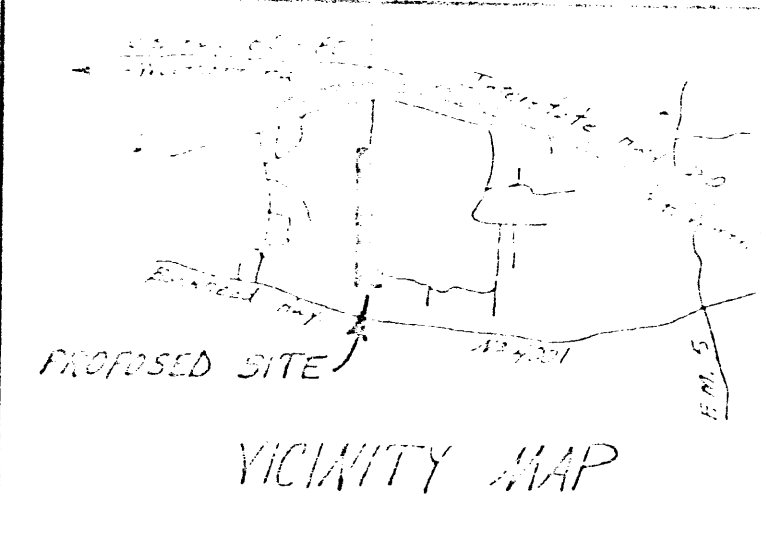
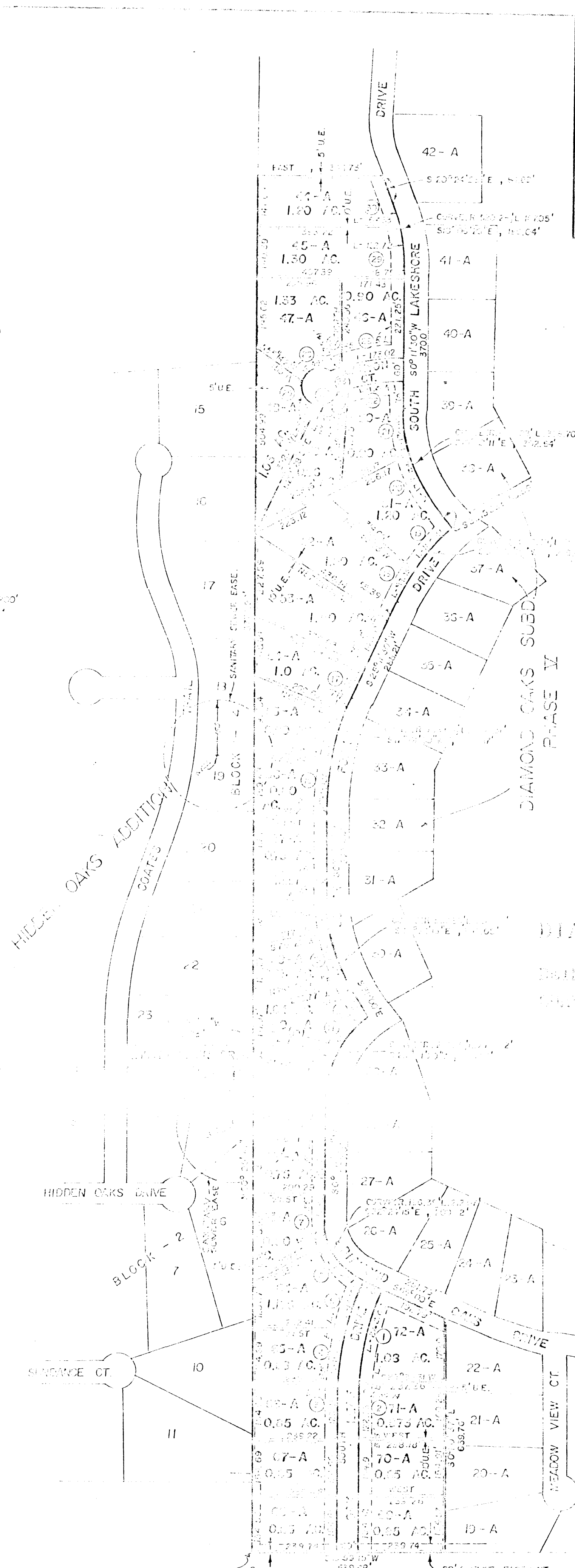




SCALE: 1" = 200'



CURVE DATA					
NO.	RADIUS	LENGTH	CHORD	ANGLE	LENGTH
1	682.43	100.00	100.00	90°	141.42
2	652.43	85.74	85.74	90°	120.74
3	742.43	100.00	100.00	90°	141.42
4	742.43	100.00	100.00	90°	141.42
5	742.43	100.00	100.00	90°	141.42
6	742.43	100.00	100.00	90°	141.42
7	742.43	100.00	100.00	90°	141.42
8	742.43	100.00	100.00	90°	141.42
9	742.43	100.00	100.00	90°	141.42
10	742.43	100.00	100.00	90°	141.42
11	742.43	100.00	100.00	90°	141.42
12	742.43	100.00	100.00	90°	141.42
13	742.43	100.00	100.00	90°	141.42
14	742.43	100.00	100.00	90°	141.42
15	742.43	100.00	100.00	90°	141.42
16	742.43	100.00	100.00	90°	141.42
17	742.43	100.00	100.00	90°	141.42
18	742.43	100.00	100.00	90°	141.42
19	742.43	100.00	100.00	90°	141.42
20	742.43	100.00	100.00	90°	141.42
21	742.43	100.00	100.00	90°	141.42
22	742.43	100.00	100.00	90°	141.42
23	742.43	100.00	100.00	90°	141.42
24	742.43	100.00	100.00	90°	141.42
25	742.43	100.00	100.00	90°	141.42
26	742.43	100.00	100.00	90°	141.42
27	742.43	100.00	100.00	90°	141.42
28	742.43	100.00	100.00	90°	141.42
29	742.43	100.00	100.00	90°	141.42
30	742.43	100.00	100.00	90°	141.42

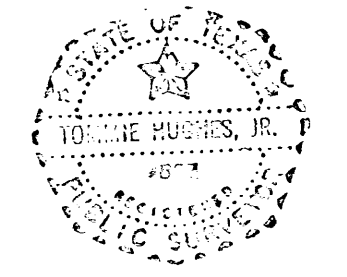
166538
 PCA 654
 RECEIVED AND RECORDED
 AT 4:00 P.M. JUN 7 1988
 COUNTY CLERK
 COUNTY OF PARKER, TEXAS

STATE OF TEXAS COUNTY OF PARKER
 I hereby certify that this instrument was filed
 in the public records of this county and that
 a copy of the same has been placed in the
 files of the County Clerk of this county and
 that the same is a true and correct copy of the
 original as recorded in the public records of this
 county.
 WITNESSED my hand and the seal of the
 County Clerk of this county this 7th day of
 June, 1988.
 COUNTY CLERK
 COUNTY OF PARKER, TEXAS

**DIAMOND OAKS SUBDIVISION
 PHASE VI**
 BEING A PART OF THE T. P. R. CO.
 GUNBY BLOCK 3, ABSTRACT 1413 IN
 PARKER COUNTY, TEXAS

RECORDING CERTIFICATE
 I hereby certify that this map
 was prepared from field notes of an actual
 survey made by me or under my supervision
 and to the best of my knowledge and belief
 represents said survey.

HUGHES AND ASSOC.
 111 E. COLUMBIA STREET
 WEATHERFORD, TEXAS 75086
 PHONE: 817-561-0214 OR 401-5118



Part of PCA 654