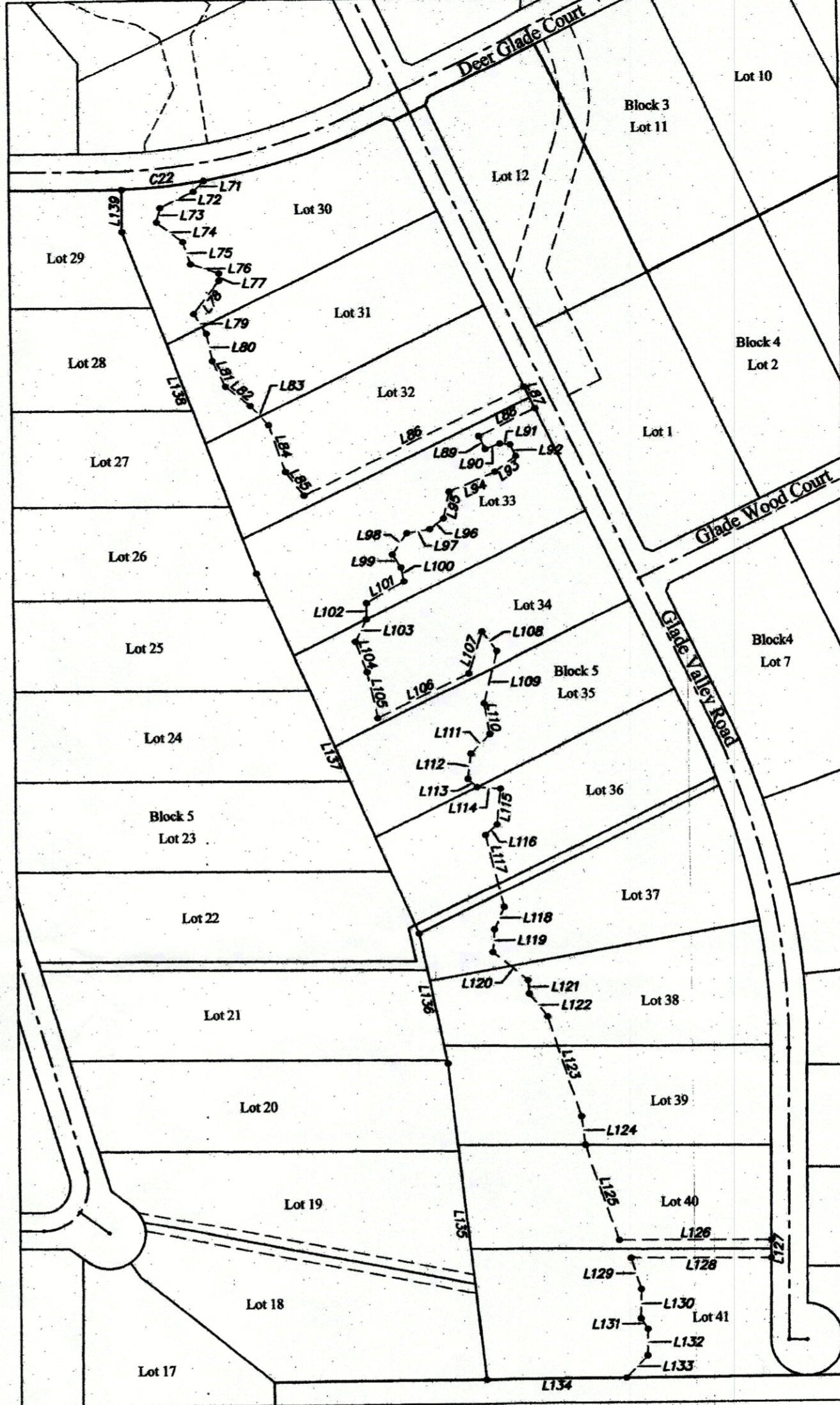


INSET 'A'
1"=200'

Inset 'B' Line Table		
Line Number	Line Bearing	Line Length
L71	S43° 29' 36"W	24.81
L72	S64° 52' 56"W	62.04
L73	S14° 14' 53"W	24.96
L74	S53° 30' 17"E	54.90
L75	S18° 17' 49"E	38.45
L76	S71° 31' 36"E	49.57
L77	S0° 41' 52"W	11.78
L78	S37° 33' 50"W	70.32
L79	S31° 57' 07"E	38.39
L80	S12° 00' 36"E	46.54
L81	S26° 49' 54"E	47.22
L82	S52° 07' 08"E	52.44
L83	S42° 32' 12"E	43.83
L84	S19° 16' 03"E	82.46
L85	S36° 54' 02"E	49.95
L86	N64° 19' 16"E	408.79
L87	S25° 40' 44"E	40.00
L88	S64° 19' 16"W	104.26
L89	S25° 40' 44"E	23.76
L90	N70° 11' 45"E	25.97
L91	S83° 29' 55"E	17.57
L92	S25° 40' 44"E	21.42
L93	S54° 36' 56"W	43.46
L94	S66° 42' 41"W	83.44
L95	S11° 55' 50"W	45.14
L96	S52° 39' 37"W	29.27
L97	S80° 32' 44"W	38.53
L98	S34° 58' 44"W	42.59
L99	S32° 54' 18"E	26.38
L100	S11° 00' 14"E	23.48
L101	S60° 52' 38"W	72.37
L102	S1° 37' 46"W	26.95
L103	S26° 50' 55"W	41.67
L104	S20° 03' 48"E	53.10
L105	S12° 27' 53"E	78.89
L106	N64° 19' 16"E	169.43
L107	N18° 19' 49"E	72.16
L108	S36° 51' 47"E	39.75
L109	S14° 31' 55"W	90.73
L110	S10° 32' 04"E	50.86
L111	S44° 37' 35"W	44.91
L112	S6° 56' 20"W	42.06
L113	S48° 07' 59"E	20.52
L114	S85° 48' 15"E	38.54
L115	S6° 14' 23"W	60.15



INSET 'B'
1"=200'

Inset 'A' Line Table		
Line Number	Line Bearing	Line Length
L44	N85° 37' 26"E	196.77
L45	N13° 57' 08"E	146.03
L46	N17° 35' 05"W	88.70
L47	N18° 18' 32"E	190.87
L48	N11° 23' 32"W	118.31
L49	N3° 08' 45"E	191.49
L50	N12° 52' 48"W	173.38
L51	N4° 09' 09"W	172.19
L52	N31° 27' 31"W	247.40
L53	N18° 42' 10"W	179.78
L54	N0° 32' 46"E	265.24
L55	N46° 36' 29"E	75.99
L56	S46° 36' 29"W	64.18
L57	S0° 32' 46"W	247.40

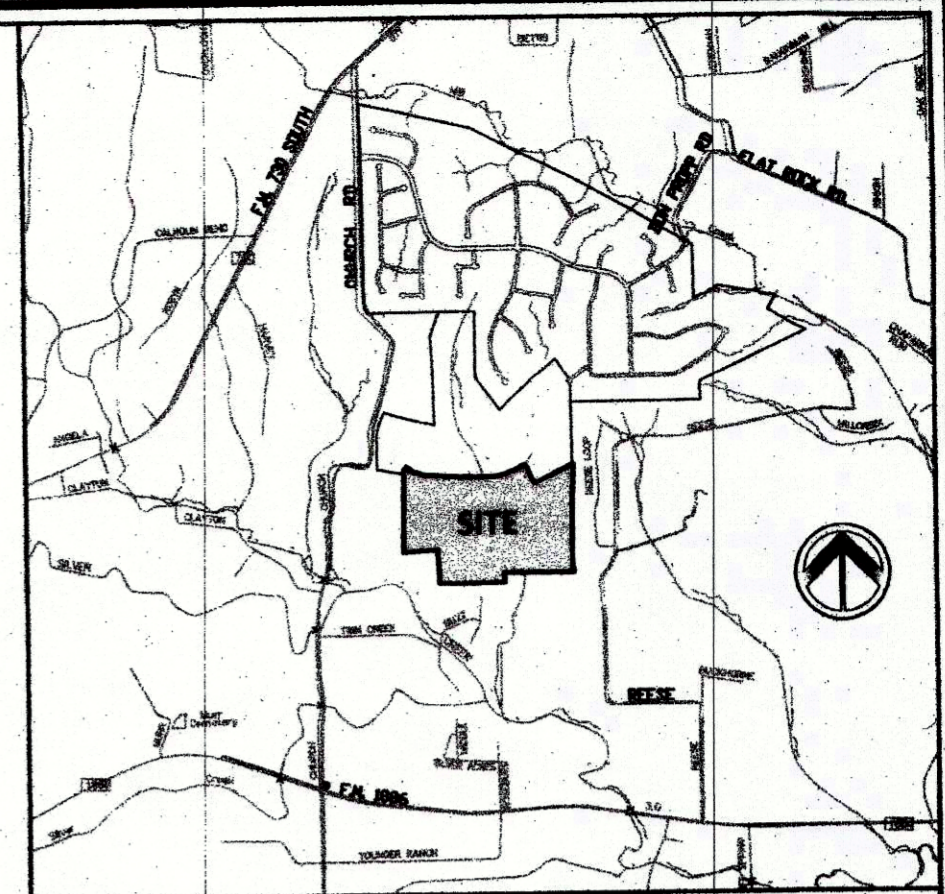
Inset 'A' Line Table		
Line Number	Line Bearing	Line Length
L58	S18° 42' 10"E	171.34
L59	S31° 27' 31"E	252.55
L60	S3° 55' 52"E	175.35
L61	S12° 52' 48"E	175.31
L62	S3° 00' 03"W	193.70
L63	S11° 23' 32"E	121.33
L64	S18° 18' 32"W	189.11
L65	S17° 35' 05"E	26.00
L66	N51° 04' 53"E	331.58
L67	S51° 04' 53"W	343.18
L68	S17° 35' 05"E	29.24
L69	S13° 57' 08"W	144.56
L70	S85° 37' 26"W	31.60

Inset 'B' Line Table		
Line Number	Line Bearing	Line Length
L116	S48° 08' 04"W	26.08
L117	S13° 44' 20"E	123.41
L118	S24° 38' 12"W	40.30
L119	S4° 31' 48"W	38.40
L120	S50° 41' 03"E	75.21
L121	S4° 40' 40"E	22.63
L122	S38° 08' 07"E	48.55
L123	S18° 15' 10"E	175.51
L124	S6° 33' 04"E	47.14
L125	S19° 14' 39"E	165.91
L126	S89° 27' 09"E	252.42
L127	S0° 34' 04"W	30.00
L128	N89° 25' 56"W	233.08
L129	S17° 30' 12"E	55.09

Inset 'B' Line Table		
Line Number	Line Bearing	Line Length
L130	S0° 45' 53"W	49.02
L131	S32° 30' 04"E	20.62
L132	S0° 43' 49"W	43.71
L133	S43° 46' 46"W	51.43
L134	S89° 52' 05"W	232.62
L135	N6° 22' 02"W	527.14
L136	N11° 58' 46"W	222.31
L137	N23° 36' 13"W	654.13
L138	N20° 48' 19"W	608.63
L139	N0° 26' 26"E	69.98

Inset 'A' Curve Table					
Curve #	Length	Radius	Delta	Chord Bearing	Chord Distance
C20	30.02'	480.00'	3°35'00"	S45°11'01"E	30.01'
C21	30.32'	60.00'	28°57'19"	S38°41'13"E	30.00'

Inset 'B' Curve Table					
Curve #	Length	Radius	Delta	Chord Bearing	Chord Distance
C22	136.46'	1030.00'	7°35'27"	N84°22'37"E	136.36'



VICINITY MAP
Not To Scale

OWNER / DEVELOPER: DEER RIDGE, LTD.
777 TAYLOR STREET
SUITE 1040
FORT WORTH, TEXAS 76102
(817)-877-9992

ENGINEER: DUNAWAY ASSOCIATES, L.P.
550 BAILEY AVENUE
SUITE 400
FORT WORTH, TX 76107
(817)-335-1121

SURVEYOR: TEXAS SURVEYING, INC.
208 S. FRONT STREET
ALEDO, TX 76008
(817)-441-5263

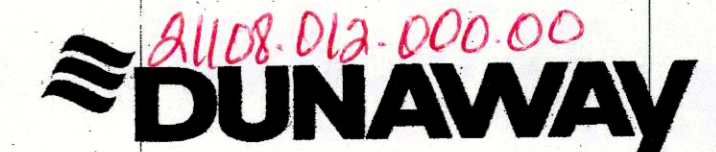
**Final Plat of
Deer Glade
(Phase 2)**
Lot 12, Block 3
Lots 1 - 13, Block 4
Lots 1 - 41, Block 5
Lots 6 - 19, Block 6
and
Lots 5X - 9X, Block 1A

An Addition to Parker County, Texas, (City of Fort Worth ETJ) situated in the L.M. Rodarmel Survey, Abstract No. 1108

69 Single Family Lots 161.776 Acres

This plat was prepared in November 2019 by Dunaway Associates, L.P.

FP-19-117
Ref. Case No. PP-18-070



E-582

C:\Production\Visual\2019\2000040\Engineering\Drawings\2000040\99\Plats\Final\Plat-Phase 2_2019-1008.dwg