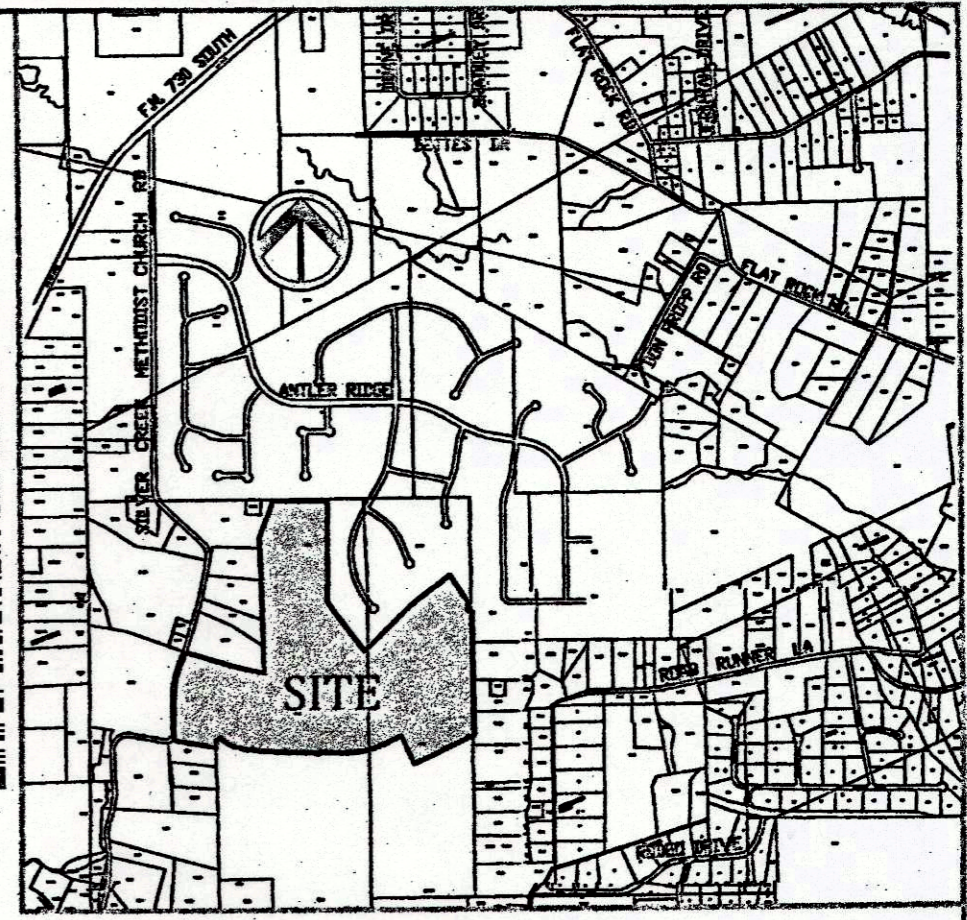
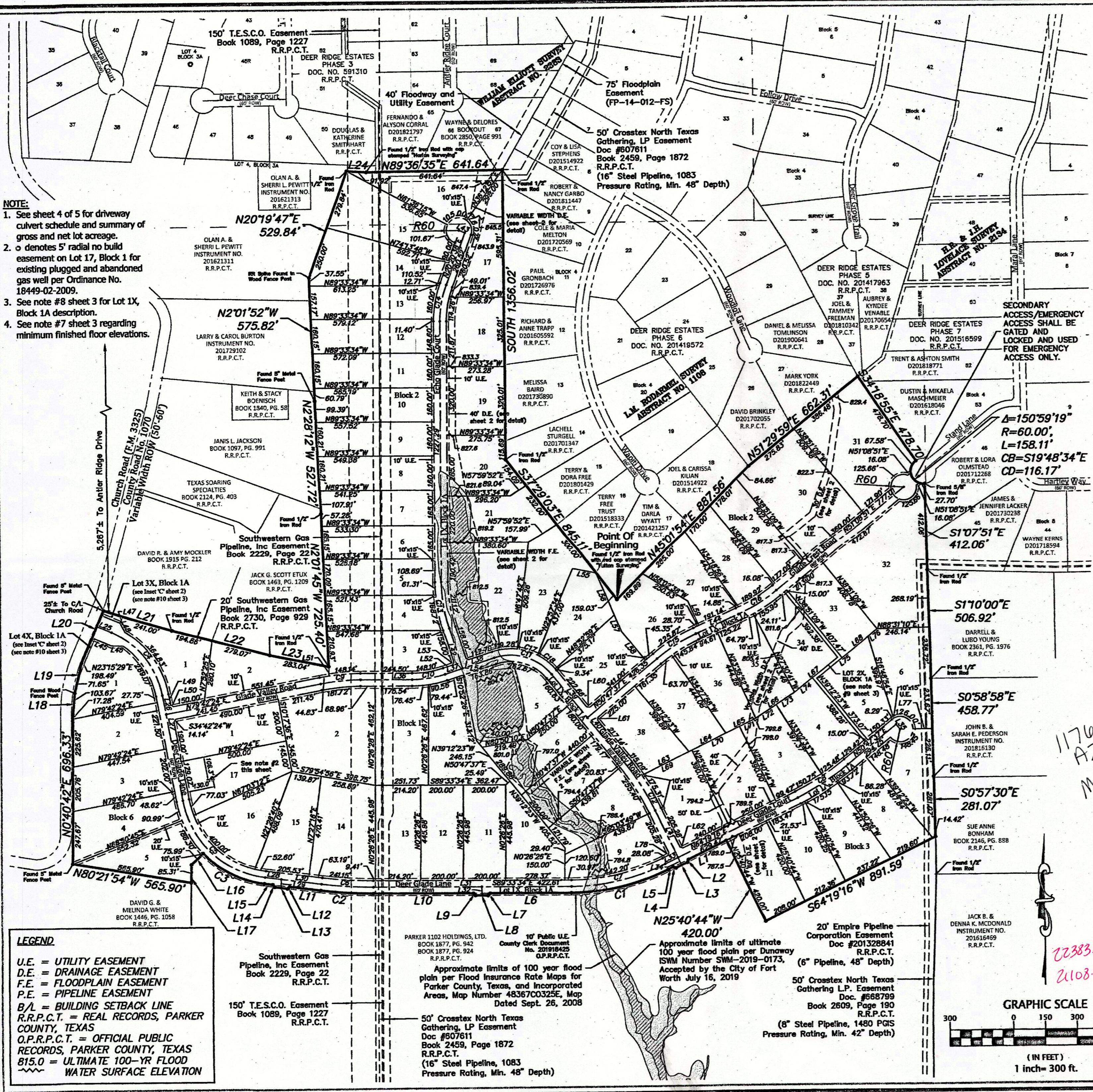


- NOTE:**
- See sheet 4 of 5 for driveway culvert schedule and summary of gross and net lot acreage.
 - o denotes 5' radial no build easement on Lot 17, Block 1 for existing plugged and abandoned gas well per Ordinance No. 18449-02-2009.
 - See note #8 sheet 3 for Lot 1X, Block 1A description.
 - See note #7 sheet 3 regarding minimum finished floor elevations.



OWNER / DEVELOPER:
DEER RIDGE, LTD.
777 TAYLOR STREET
SUITE 1040
FORT WORTH, TEXAS 76102
(817)-877-9992

ENGINEER:
DUNAWAY ASSOCIATES, L.P.
550 BAILEY AVENUE
SUITE 400
FORT WORTH, TX 76107
(817)-335-1121

SURVEYOR:
FULTON SURVEYING, INC.
115 ST. LOUIS AVENUE
FORT WORTH, TX 76104
(817)-335-3625

SURVEYOR:
TEXAS SURVEYING, INC.
208 S. FRONT STREET
ALEDO, TX 76008
(817)-441-5263

Final Plat of
Deer Glade
(Phase 1)



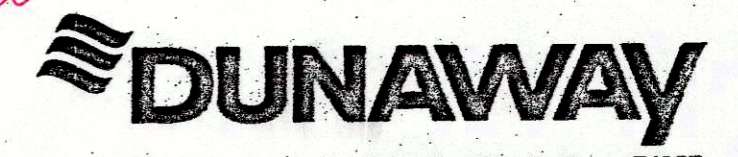
Lots 1 - 17, Block 1
Lots 1 - 38, Block 2
Lots 1 - 11, Block 3
Lots 1 - 5, Block 6
and
Lots 1X - 4X, Block 1A

An Addition to Parker County, Texas, (City of Fort Worth ETJ) situated in the L.M. Rodarmel Survey, Abstract No. 1108 and the William Elliott Survey, Abstract No. 2382

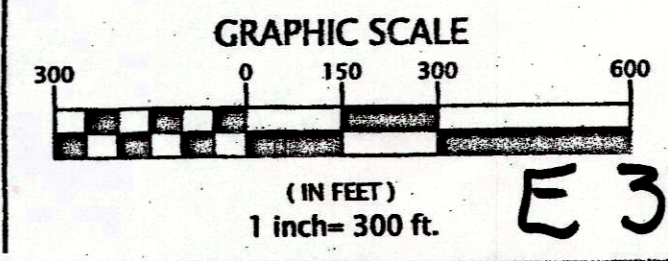
71 Lots 181.635 Acres

This plat was prepared in April 2019
by Dunaway Associates, L.P.

Ref. Case No. PP-18-070



550 Bailey Avenue • Suite 400 • Fort Worth, Texas 76107
Tel: 817.335.1121
(TX REG. F-1114)



E 368

LEGEND

U.E. = UTILITY EASEMENT
D.E. = DRAINAGE EASEMENT
F.E. = FLOODPLAIN EASEMENT
P.E. = PIPELINE EASEMENT
B/L = BUILDING SETBACK LINE
R.R.P.C.T. = REAL RECORDS, PARKER COUNTY, TEXAS
O.P.R.P.C.T. = OFFICIAL PUBLIC RECORDS, PARKER COUNTY, TEXAS
815.0 = ULTIMATE 100-YR FLOOD WATER SURFACE ELEVATION

Southwestern Gas Pipeline, Inc Easement Book 2229, Page 22 R.R.P.C.T.

150' T.E.S.C.O. Easement Book 1089, Page 1227 R.R.P.C.T.

PARKER 1102 HOLDINGS, LTD. BOOK 1877, PG. 942 BOOK 1877, PG. 924 R.R.P.C.T.

10' Public U.E. County Clerk Document No. 201918425 O.P.R.P.C.T.

Approximate limits of 100 year flood plain per Flood Insurance Rate Maps for Parker County, Texas, and incorporated Areas, Map Number 48367C0325E, Map Dated Sept. 26, 2008

50' Crosstex North Texas Gathering, LP Easement Doc #507611 Book 2459, Page 1872 R.R.P.C.T.

16" Steel Pipeline, 1083 Pressure Rating, Min. 48" Depth

20' Empire Pipeline Corporation Easement Doc #201328841 R.R.P.C.T.

50' Crosstex North Texas Gathering L.P. Easement Doc. #668799 Book 2609, Page 190 R.R.P.C.T.

8" Steel Pipeline, 1480 PGS Pressure Rating, Min. 42" Depth

11762
AZ
M-10

22383.002-000-00
21108.012-001-00

E377 Replaces this plat (E-368)