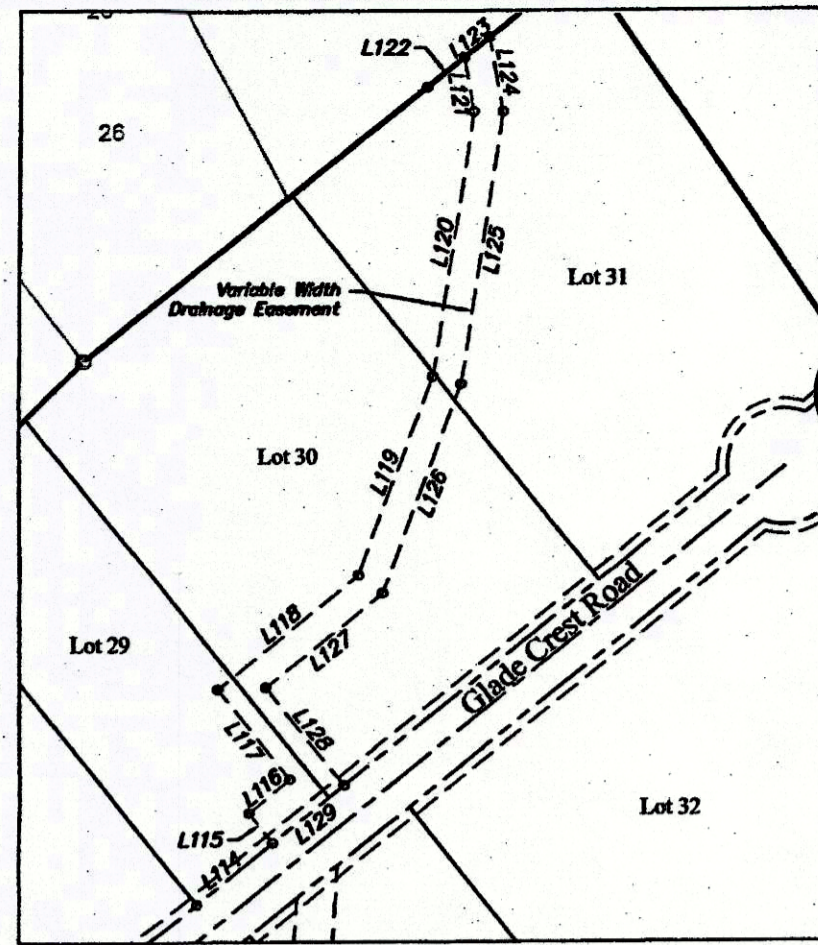
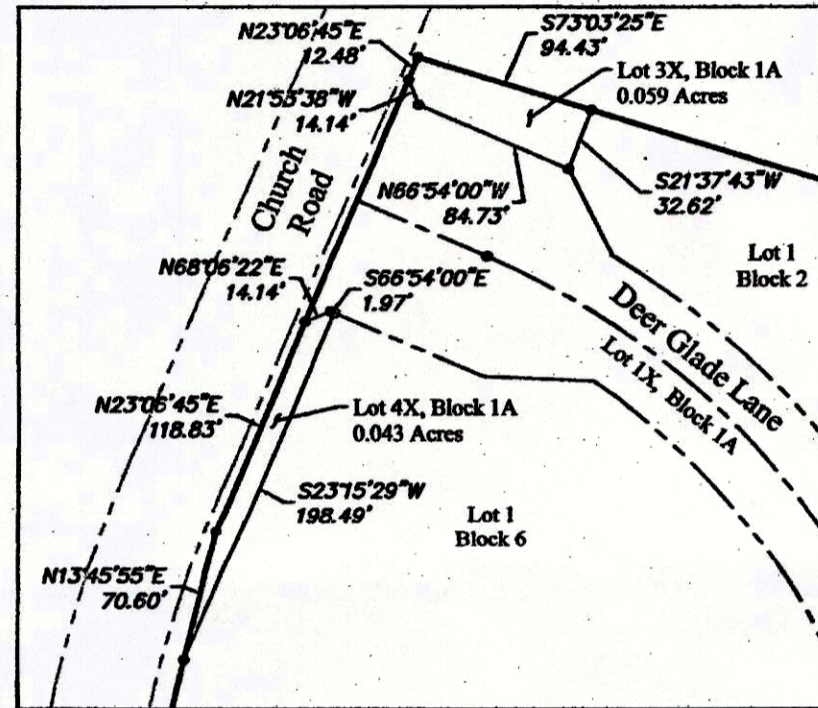


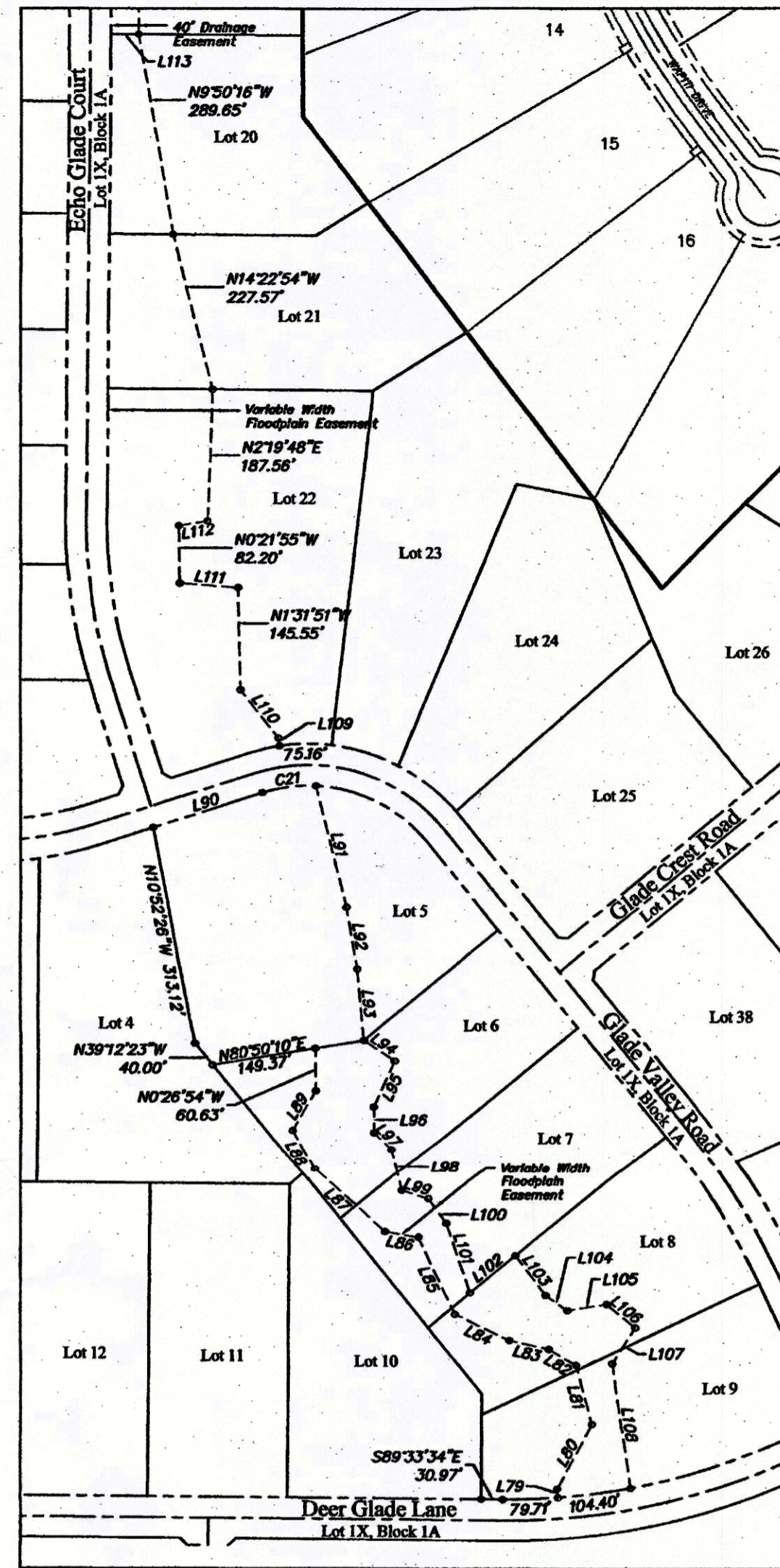
INSET 'A'
1"=200'



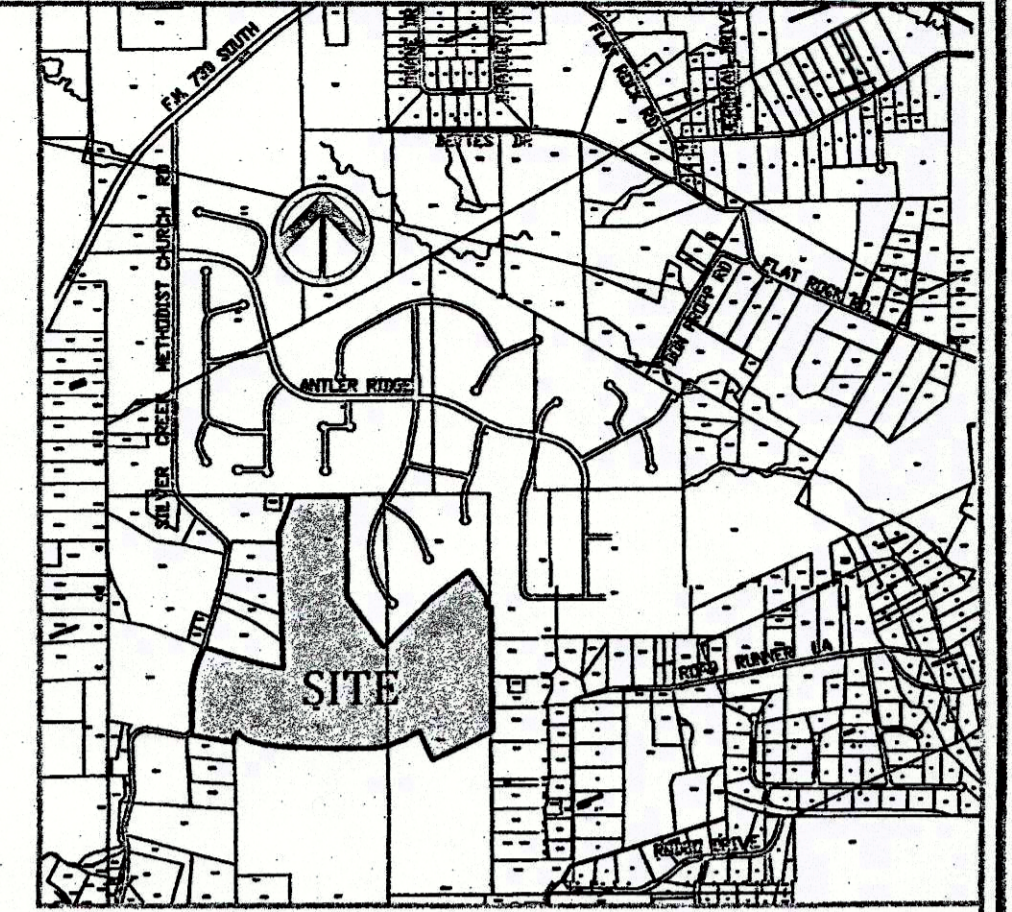
INSET 'B'
1"=200'



INSET 'C'
1"=100'



INSET 'D'
1"=200'



VICINITY MAP
Not To Scale

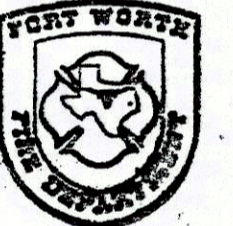
OWNER / DEVELOPER: DEER RIDGE, LTD.
777 TAYLOR STREET
SUITE 1040
FORT WORTH, TEXAS 76102
(817)-877-9992

ENGINEER: DUNAWAY ASSOCIATES, L.P.
550 BAILEY AVENUE
SUITE 400
FORT WORTH, TX 76107
(817)-335-1121

SURVEYOR: FULTON SURVEYING, INC.
115 ST. LOUIS AVENUE
FORT WORTH, TX 76104
(817)-335-3625

SURVEYOR: TEXAS SURVEYING, INC.
208 S. FRONT STREET
ALEDO, TX 76008
(817)-441-5263

Final Plat of Deer Glade (Phase 1)



*Let. Review
08-14-2019*

Lots 1 - 17, Block 1
Lots 1 - 38, Block 2
Lots 1 - 11, Block 3
Lots 1 - 5, Block 6
and
Lots 1X - 4X, Block 1A

An Addition to Parker County, Texas, (City of Fort Worth ETJ) situated in the L.M. Rodarmel Survey, Abstract No. 1108 and the William Elliott Survey, Abstract No. 2382 *2383*

71 Lots 181.635 Acres

This plat was prepared in April 2019 by Dunaway Associates, L.P.

Ref. Case No. PP-18-070



550 Bailey Avenue • Suite 400 • Fort Worth, Texas 76107
Tel: 817.335.1121
(TX REG. F-1114)

Inset Curve Table					
Curve #	Length	Radius	Delta	Chord Bearing	Chord Distance
C19	78.63'	70.00'	64°21'32"	N6°30'02"E	74.56'
C20	24.47'	30.00'	46°43'37"	N26°55'08"E	23.79'
C21	57.09'	70.00'	46°43'37"	S26°55'08"W	55.52'
C22	33.70'	30.00'	64°21'32"	S6°30'02"W	31.95'
C23	196.09'	275.00'	40°51'19"	S5°15'04"E	191.96'
C24	88.02'	225.89'	22°19'33"	N14°28'16"W	87.46'

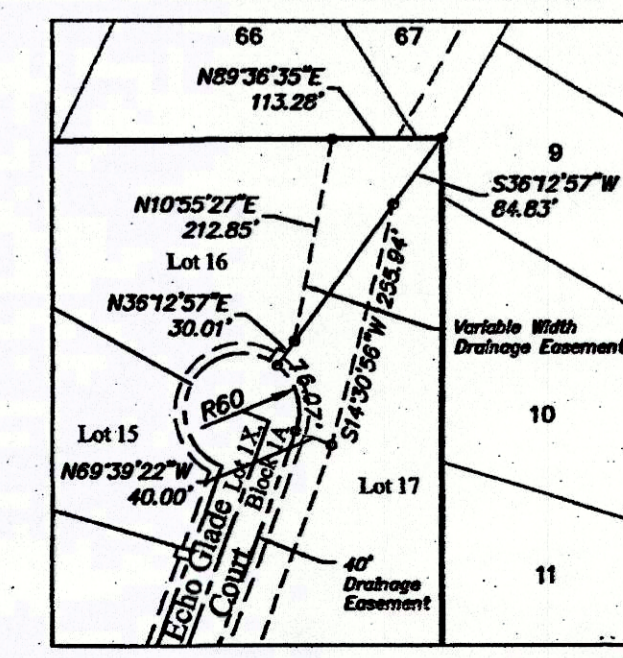
Inset 'A' Line Table		
Line Number	Line Bearing	Line Length
L130	S64° 19' 16"W	141.00
L131	S25° 40' 44"E	3.88
L132	N25° 40' 44"W	94.10
L133	N25° 40' 44"W	3.88
L134	S64° 19' 16"E	17.00
L135	N64° 19' 16"E	202.68
L136	N4° 19' 16"E	34.64
L137	N25° 40' 44"W	108.54
L138	N38° 40' 48"E	251.90
L139	N8° 11' 41"E	174.42
L140	N22° 51' 45"E	374.27
L141	N50° 16' 56"E	75.59
L142	N3° 32' 22"E	158.06
L143	S51° 08' 51"W	62.76
L144	N51° 08' 51"E	54.16
L145	S3° 32' 23"W	194.59
L146	S50° 16' 56"W	65.83
L147	S22° 51' 45"W	359.36
L148	S8° 11' 41"W	180.18
L149	S38° 40' 48"W	262.80
L150	S25° 40' 44"E	108.54
L151	S55° 40' 44"E	34.64
L152	S64° 19' 16"W	74.64

Inset 'B' Line Table		
Line Number	Line Bearing	Line Length
L114	N51° 08' 51"E	102.03
L115	N38° 51' 09"W	40.00
L116	N51° 08' 51"E	54.97
L117	N38° 51' 09"W	119.68
L118	N51° 08' 51"E	187.76
L119	N20° 37' 01"E	220.05
L120	N8° 44' 56"E	277.00
L121	N9° 28' 23"W	57.07
L122	S51° 29' 59"W	49.86
L123	N51° 29' 59"E	34.31
L124	S9° 28' 23"E	78.53
L125	S8° 44' 56"W	284.93
L126	S20° 37' 01"W	231.36
L127	S51° 08' 51"W	155.95
L128	S38° 51' 09"E	129.68
L129	S51° 08' 51"W	94.97

Inset 'D' Line Table		
Line Number	Line Bearing	Line Length
L79	N4° 16' 04"W	12.70
L80	N28° 39' 23"E	104.18
L81	N15° 03' 55"W	87.58
L82	N60° 04' 54"W	45.57
L83	N77° 36' 21"W	57.60
L84	N64° 34' 00"W	86.81
L85	N25° 52' 43"W	120.90
L86	N80° 23' 36"W	48.48
L87	N47° 53' 01"W	135.89
L88	N28° 32' 18"W	66.72
L89	N30° 00' 53"E	65.90
L90	S72° 23' 11"W	163.86
L91	N14° 12' 34"W	178.41
L92	N10° 14' 32"W	89.33
L93	N5° 04' 41"W	102.24
L94	N56° 11' 22"W	52.88
L95	N24° 26' 09"E	72.32

Inset 'D' Line Table		
Line Number	Line Bearing	Line Length
L96	N0° 41' 33"W	37.23
L97	N44° 59' 29"W	35.74
L98	N12° 42' 27"W	64.02
L99	N73° 24' 34"W	40.22
L100	N36° 20' 19"W	43.33
L101	N19° 16' 37"W	105.09
L102	S50° 47' 37"W	83.97
L103	N37° 20' 27"W	71.44
L104	N56° 21' 22"W	38.20
L105	S81° 07' 58"W	56.73
L106	N50° 48' 27"W	52.69
L107	N33° 10' 31"E	60.93
L108	N8° 16' 53"W	179.27
L109	N8° 35' 07"W	11.41
L110	N38° 06' 39"W	87.71
L111	N85° 28' 14"W	83.49
L112	N80° 37' 36"E	40.89

Inset 'D' Line Table		
Line Number	Line Bearing	Line Length
L113	N89° 33' 34"W	40.00



INSET 'E'
1"=200'

E-368

E-377 Replaces this Plat (E-368)