

CENTERLINE CURVE TABLE

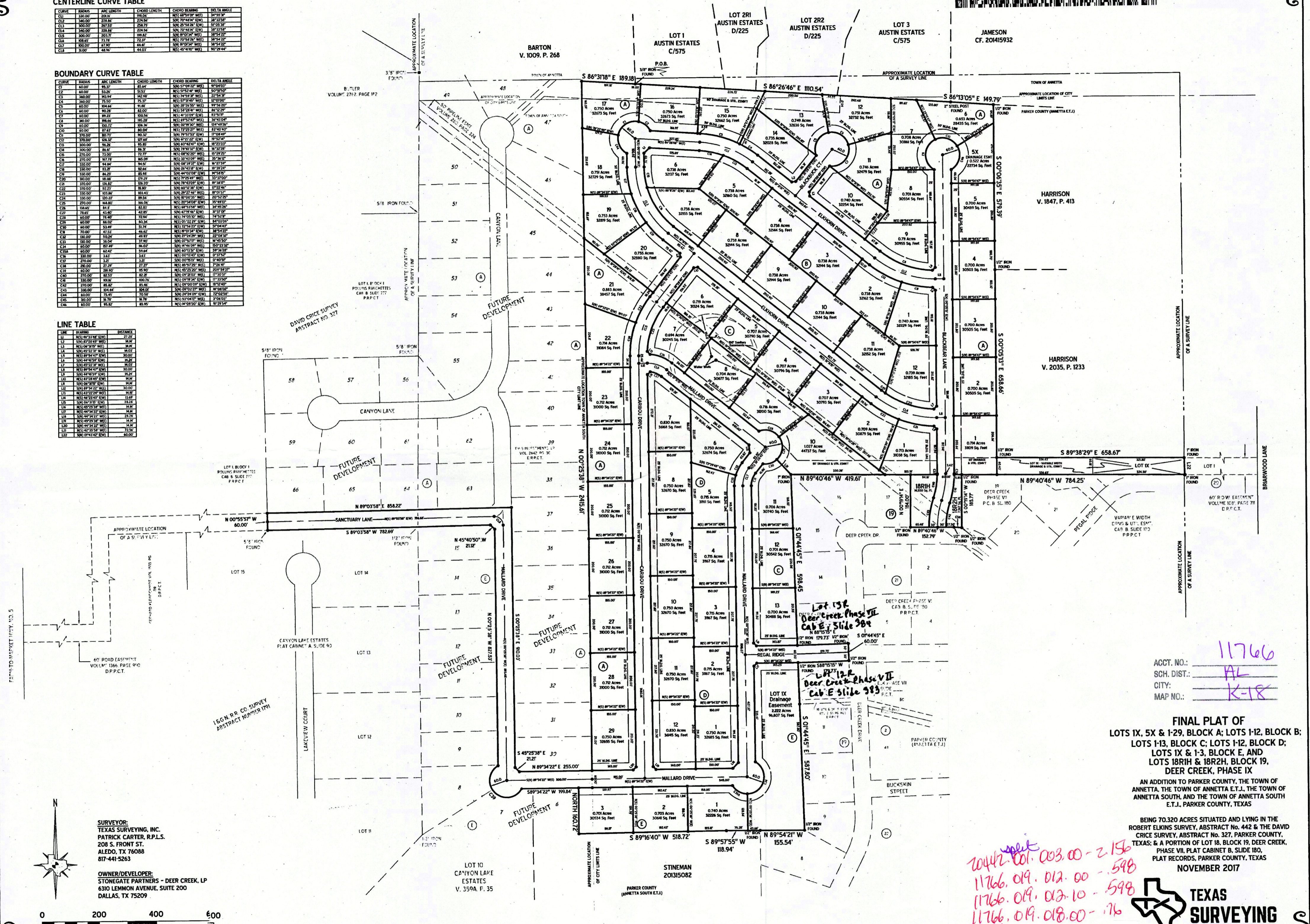
Table with columns: CURVE, BEARS, ARC LENGTH, CHORD LENGTH, CHORD BEARING, DELTA ANGLE. Lists curve data for C1 through C18.

BOUNDARY CURVE TABLE

Table with columns: CURVE, BEARS, ARC LENGTH, CHORD LENGTH, CHORD BEARING, DELTA ANGLE. Lists boundary curve data for C1 through C68.

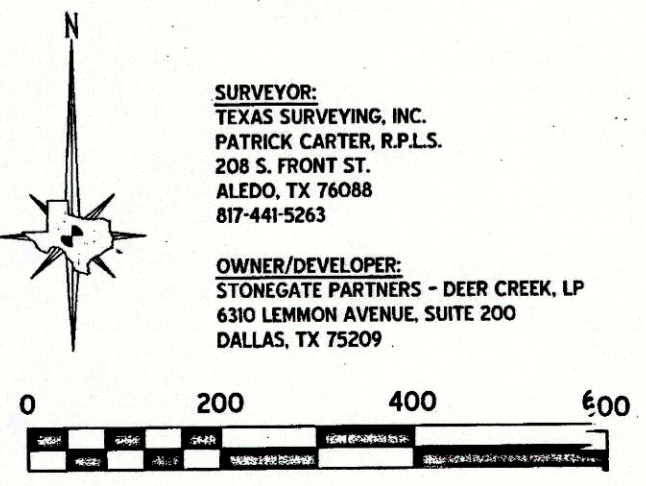
LINE TABLE

Table with columns: LINE, BEARS, DISTANCE. Lists line data for L1 through L22.



SURVEYOR: TEXAS SURVEYING, INC. PATRICK CARTER, R.P.L.S. 208 S. FRONT ST. ALEDO, TX 76088 817-441-5263

OWNER/DEVELOPER: STONEGATE PARTNERS - DEER CREEK, LP 6310 LEMMON AVENUE, SUITE 200 DALLAS, TX 75209



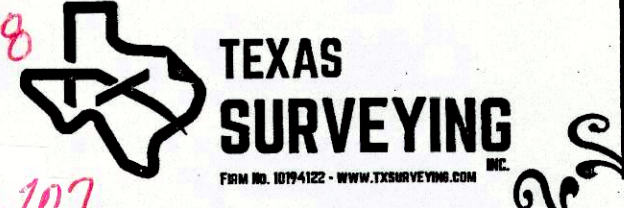
ACCT. NO.: 11766
SCH. DIST.: AL
CITY: K-18
MAP NO.:

FINAL PLAT OF LOTS 1-31, BLOCK A; LOTS 1-12, BLOCK B; LOTS 1-13, BLOCK C; LOTS 1-12, BLOCK D; LOTS 1X & 1-3, BLOCK E, AND LOTS 18RII & 18R2H, BLOCK 19, DEER CREEK, PHASE IX

AN ADDITION TO PARKER COUNTY, THE TOWN OF ANNETTA, THE TOWN OF ANNETTA E.T.J., THE TOWN OF ANNETTA SOUTH, AND THE TOWN OF ANNETTA SOUTH E.T.J., PARKER COUNTY, TEXAS

BEING 70.320 ACRES SITUATED AND LYING IN THE ROBERT ELKINS SURVEY, ABSTRACT No. 442 & THE DAVID CRICE SURVEY, ABSTRACT No. 327, PARKER COUNTY, TEXAS; & A PORTION OF LOT 18, BLOCK 19, DEER CREEK, PHASE VII, PLAT CABINET B, SLIDE 180, PLAT RECORDS, PARKER COUNTY, TEXAS

NOVEMBER 2017



Handwritten notes: 20442.001.003.00 - 2.150, 11766.019.012.00 - 598, 11766.019.012.10 - 598, 11766.019.018.00 - 76, 20442.001.000.00 - 66.207

E 385