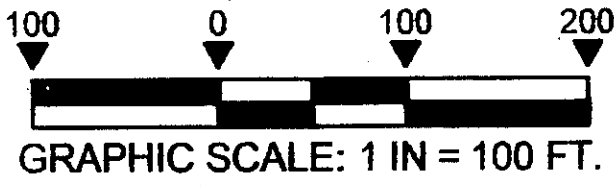


C782



NOTES:

- 1. DENOTES MONUMENTS USED FOR BASIS OF BEARING.
- BASIS OF BEARING IS THE SOUTHERLY RIGHT-OF-WAY LINE OF F.M. 730 AS REFERENCED IN DEED RECORDED IN VOLUME 1791, PAGE 927, D.R.P.C.T. BEARING - N. 43° 42'53" E.

"This plat represents property which has been platted without a groundwater certification as prescribed in the Texas Local Government Code, Section 232.0032. Buyer is advised to question the seller as to the groundwater availability."

NOTE:  
Water service for this plat is provided by the City of Azle.

CITY OF AZLE  
SURVEY

ARTHUR E. & BRENDA SCARBRO  
VOL. 1475, PG. 453,  
D.R.P.C.T.

FENCE POST  
FOUND FOR CORNER

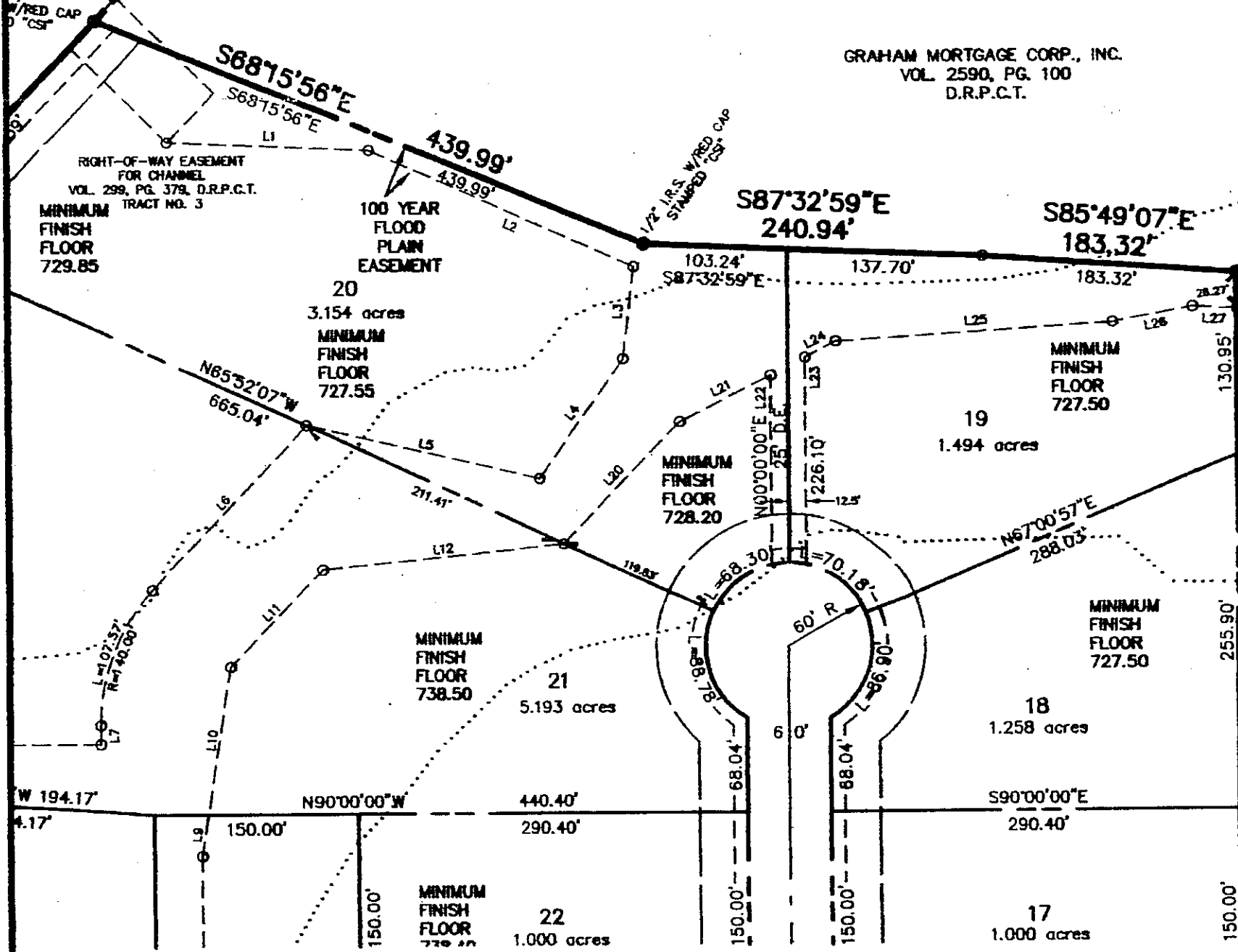
500' ONE STAR  
GAS CO. EASEMENT

1/2" U.S. W/RED CAP  
STAMPED "CS"

S. DODSON SURVEY,  
ABSTRACT NUMBER 363

GRAHAM MORTGAGE CORP., INC.  
VOL. 2590, PG. 100  
D.R.P.C.T.

T&P RR. CO. SURVEY,  
ABSTRACT NUMBER 1431

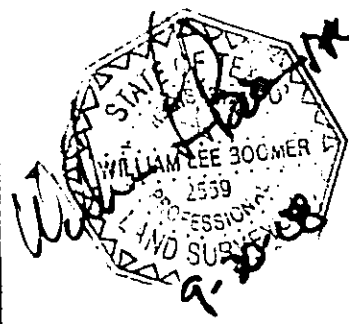
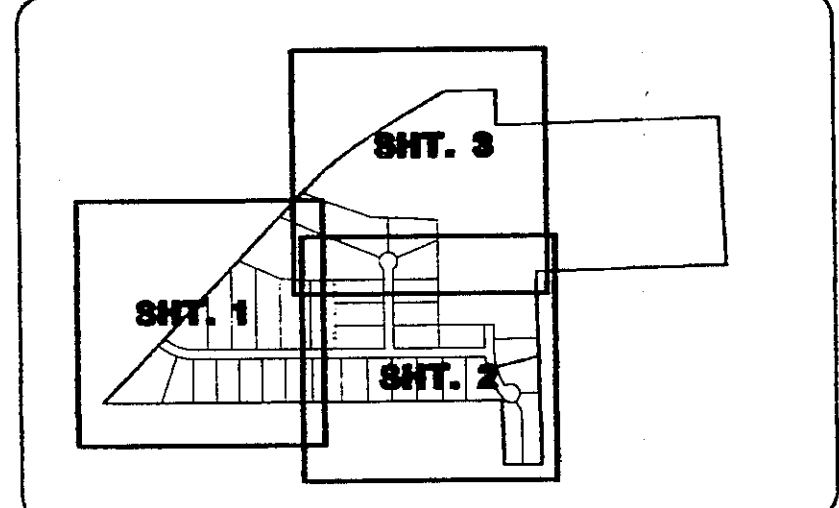
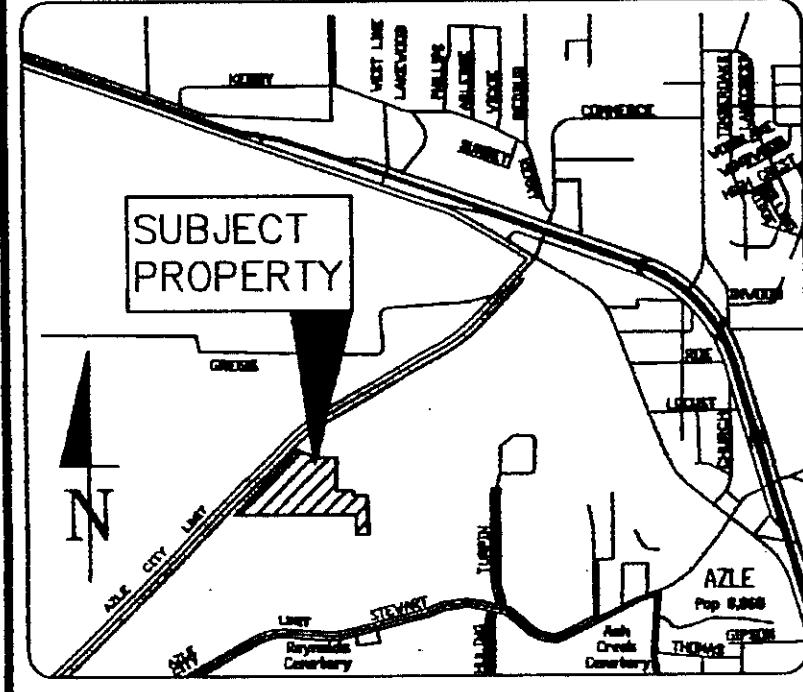


Doc# 708520 Fees: \$78.00  
 03/26/2009 3:50PM # Pages 1  
 Filed & Recorded in Official Records of  
 PARKER COUNTY, TEXAS  
 TRAMP BRINSON COUNTY CLK

GRAHAM MORTGAGE CORP., INC.  
 VOL. 2590, PG. 100  
 D.R.P.C.T.

LOCATION MAP  
Not to Scale

KEY MAP  
Not to Scale



ACCT. NO: 11645  
 SCH. DIST: AZ  
 CITY: CO/AZ  
 MAP NO: N-9

FINAL PLAT

**LOTS 27-44, BLOCK 1 &  
 LOTS 14-30, BLOCK 2,  
 CREEKWOOD RANCH ESTATES**

BEING 53.722 ACRES OF LAND  
 SITUATED IN THE S.A. DODSON SURVEY,  
 ABSTRACT NUMBER 363, AND THE  
 S. SMITH SURVEY, ABSTRACT NUMBER 2781,  
 PARKER COUNTY, TEXAS

PREPARED FEBRUARY 17, 2007

DEVELOPERS:  
 GRAHAM MORTGAGE CORP., INC.  
 3838 OAK LAWN AVENUE, SUITE 1500  
 DALLAS, TEXAS 75219  
 CONTACT: ADLAI PENNINGTON  
 (214) 522-6400  
 (214) 522-6103 fax

**CivilSolutions Inc**  
 Engineers Surveyors Planners  
 P.O. Box 100247, Fort Worth, Texas, 76185  
 (817) 423-0060 (817) 346-0520 Fax

PLAT FILED \_\_\_\_\_, 2008  
 CABINET \_\_\_\_\_ SLIDE \_\_\_\_\_  
 PARKER COUNTY PLAT RECORDS