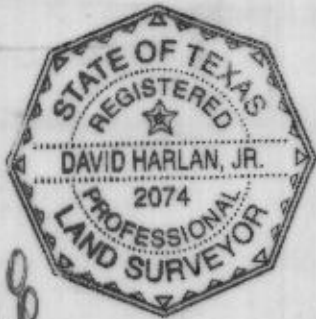


CREEK BEND RANCH

A FINAL PLAT OF A SUBDIVISION OF 194.079 ACRES SITUATED IN THE JOHN GORDON SURVEY, ABSTRACT No. 518 AND THE G. DULONG deROSNAY SURVEY, ABSTRACT No. 2617, PARKER COUNTY, TEXAS

THIS is to certify that I, David Harlan Jr., a Registered Public Land Surveyor of the State of Texas, have plotted the above subdivision from an actual survey on the ground and all lot corners, angle points and points of curve are properly marked on the ground, and that this plat correctly represents that survey made by me or under my supervision.

David Harlan, Jr.
Registered Professional Land Surveyor, No. 2074
June 25, 2001

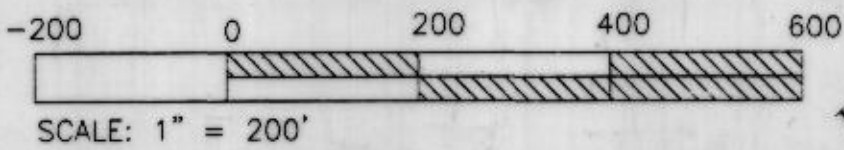


DEVELOPER:
The Western Group, L.L.C.
Tomme Hargrove - Manager
P O Box 905
Tolar, TX 76476-0905
254-834-3835

PC608

JACK WILLIAMS
VOLUME 1591, PAGE 844
ABSTRACT No. 2469

NOTE:
LINE AND CURVE DATA FOR STREETS ARE ON PAGE TWO



G. DULONG DE ROSNAY SURVEY
ABSTRACT No. 2617

20' SOUTHWESTERN GAS EASEMENT
VOLUME 686, PAGE 210

5.50 ACRES
293580 SF

14
5.877 ACRES
255993 SF

15
4.70 ACRES
204964 SF

2.857 ACRES
124465 SF

2.994 ACRES
124465 SF

3.197 ACRES
139254 SF

2.618 ACRES
114046 SF

3.061 ACRES
133338 SF

3.082 ACRES
134236 SF

5.0 ACRES
217800 SF

12
5.0 ACRES
217800 SF

9.0 ACRES
392040 SF

JOHN GORDON SURVEY
ABSTRACT No. 518

10.0 ACRES
435600 SF

11
3.30 ACRES
143748 SF

10
2.50 AC.
108900 SF

6.736 ACRES
293438 SF

5.010 ACRES
218220 SF

3.985 ACRES
173595 SF

5.0 ACRES
217800 SF

4.998 ACRES
217725 SF

2.5 ACRES
108900 SF

10.0 ACRES
435600 SF

5.0 ACRES
217800 SF

6.807 ACRES
252968 SF

3.414 ACRES
148919 SF

5.924 ACRES
258053 SF

4.840 ACRES
210826 SF

4.897 ACRES
213320 SF

4.364 ACRES
190077 SF

5.269 ACRES
229533 SF

5.0 ACRES
217800 SF

4.374 ACRES
190444 SF

3.461 ACRES
158596 SF

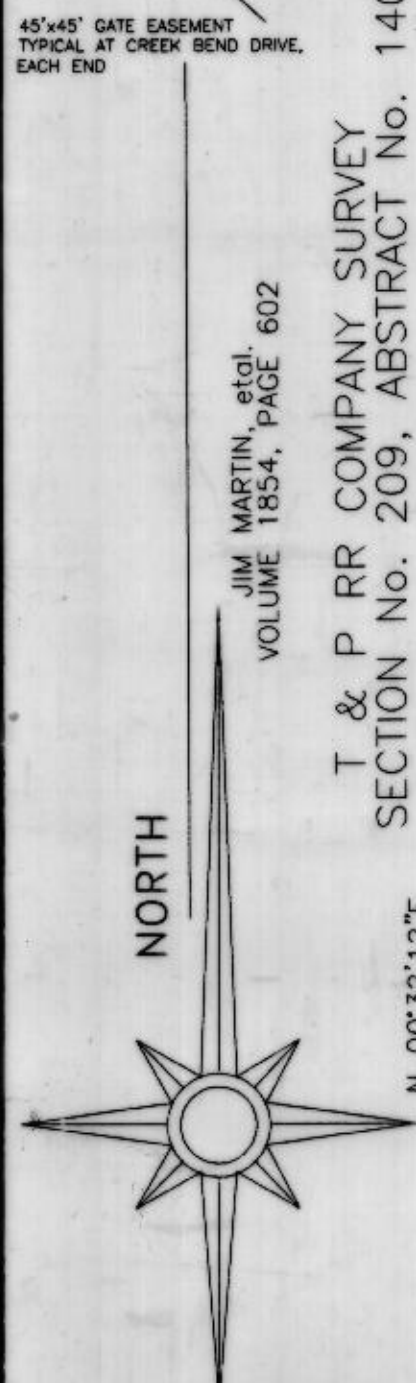
5.0 ACRES
217800 SF

5.143 ACRES
224021 SF

4.049 ACRES
176380 SF

2.967 ACRES
129263 SF

3.724 ACRES
162216 SF



HARLAN LAND SURVEYING, INC.
215 EAST EUREKA
WEATHERFORD, TX 76086
METRO(817)596-9700-(817)599-0880
FAX: METRO(817) 341-2833

JIM MARTIN, et al.
VOLUME 1854, PAGE 602

SHEET ONE OF TWO

01218PLAT