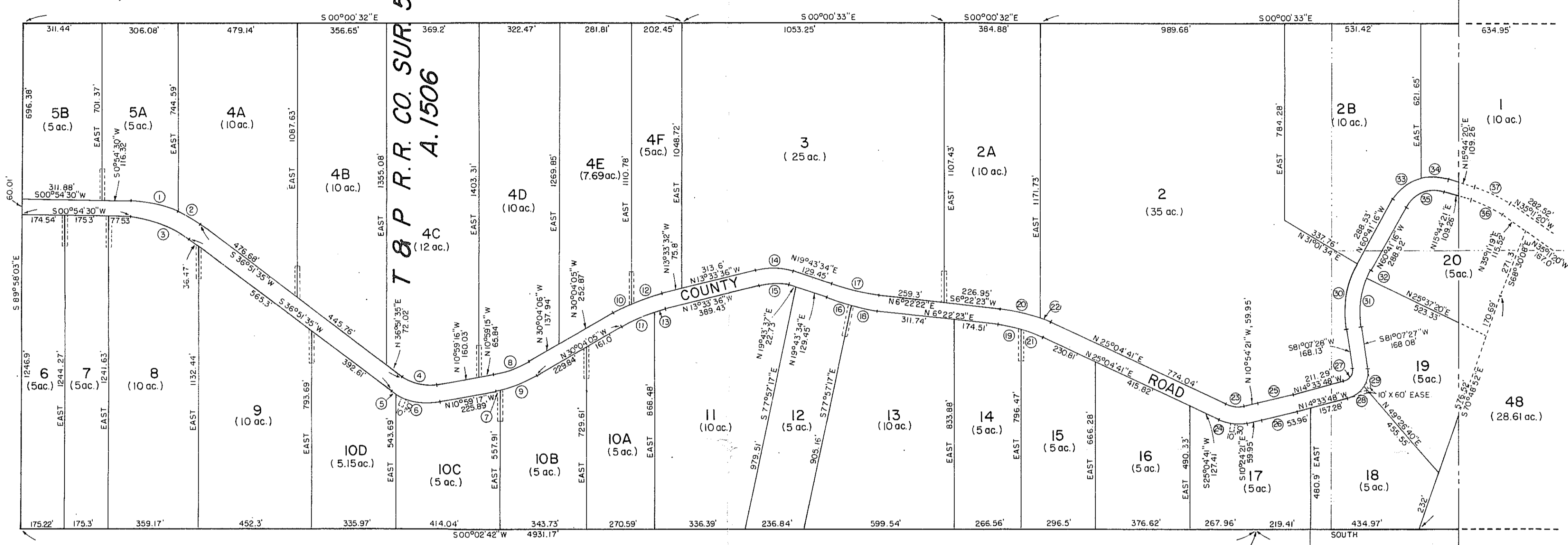


SCALE: 1" = 300'

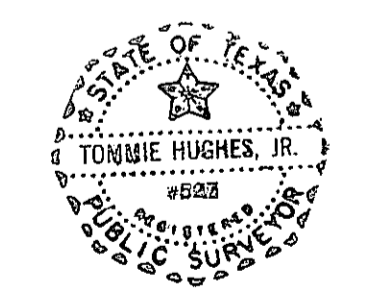


M. B. ROACH  
SURV. A. 2502

NOTE: UTILITY EASEMENTS TO BE 5' OFF LOT LINE AND 125' LONG EXCEPT OTHERWISE INDICATED.

CURVE DATA			
NO.	R	CH. BRG. & LGTH.	LGTH.
1	492.32	S12°17'04"W, 194.21'	195.5
2	492.32	N30°15'37"E, 113.16'	113.42
3	432.32	S18°53'02"W, 266.84'	271.27
4	195.41	N12°56'10"E, 158.49'	163.19
5	255.41	N33°54'25"E, 26.32'	26.33
6	255.41	N9°58'59"E, 182.82'	186.97
7	506.02	N11°41'44"W, 12.5'	12.5
8	446.02	N20°31'42"W, 147.84'	148.53
9	506.02	N21°14'02"W, 155.39'	156.0
10	719.35	N27°14'42"W, 70.83'	70.86
11	659.35	N23°49'17"W, 143.49'	143.77
12	719.35	N18°59'28"W, 136.19'	136.4
13	659.35	N15°34'02"W, 46.19'	46.2
14	280.89	N3°04'57"E, 160.9'	163.19
15	220.89	N3°05'07"E, 126.53'	128.33
16	884.28	N16°21'56"E, 103.67'	103.73
17	824.28	N13°02'57"E, 191.67'	192.1
18	884.28	N9°41'20"E, 102.29'	102.35
19	577.17	S11°05'18"W, 94.89'	95.0
20	637.18	S13°46'09"W, 164.04'	164.5
21	577.17		93.43
22	637.18	N13°43'32"E, 207.09'	208.01
23	123.96	N7°05'10"E, 76.58'	77.85
24	183.96	S7°05'08"W, 113.64'	115.53
25	2318.99	N12°44'05"W, 148.0'	148.03
26	2378.99	S12°44'01"E, 151.84'	151.86
27	47.32	N56°43'10"W, 63.52'	69.65
28	107.32	N35°38'05"W, 77.18'	78.95
29	107.32	N77°46'46"W, 77.19'	78.96
30	391.1'	N79°46'54"W, 255.87'	260.67
31	331.1'	N82°42'38"W, 184.46'	186.93
32	331.1'	N63°36'43"W, 33.78'	33.8
33	188.77	N40°13'58"W, 131.94'	134.78
34	188.77	N2°01'10"W, 115.15'	117.01
35	128.77	N22°28'27"W, 159.31'	171.77
36	407.63	N25°27'50"E, 137.71'	138.37
37	467.63	N25°27'51"E, 157.98'	158.74

A MAP OF TRACTS KNOWN AS  
**COUNTRY LIVING**  
IN PARKER COUNTY, TEXAS



**HUGHES AND ASSOCIATES**  
LAND SURVEYING  
CIVIL ENGINEERING  
LAND PLANNING  
131 W. CHURCH STREET WEATHERFORD, TEXAS  
OFFICE 594-5374 HOME 594-2165

I, *Tommie Hughes, Jr.* certify that this map was prepared from field notes of an actual survey made by me or under my supervision and to the best of my knowledge and belief represents said survey.

Date *Dec 1977* No. \_\_\_\_\_