

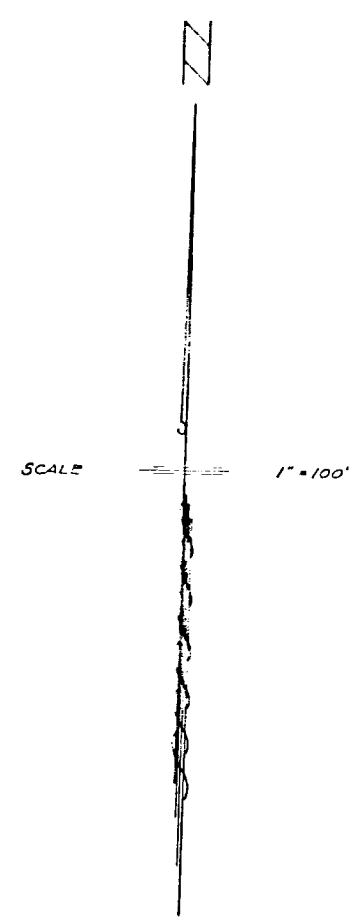
320 p 2:20 P

County Clerk

APPROVED BY COMMISSIONERS CT OF PARKER CO, TEXAS

County Judge  
Com. Pct. #1  
Com. Pct. #2  
Com. Pct. #3  
Com. Pct. #4

*John W. ...*  
*Scott ...*  
*Charles ...*  
*Louis ...*  
*A. J. ...*

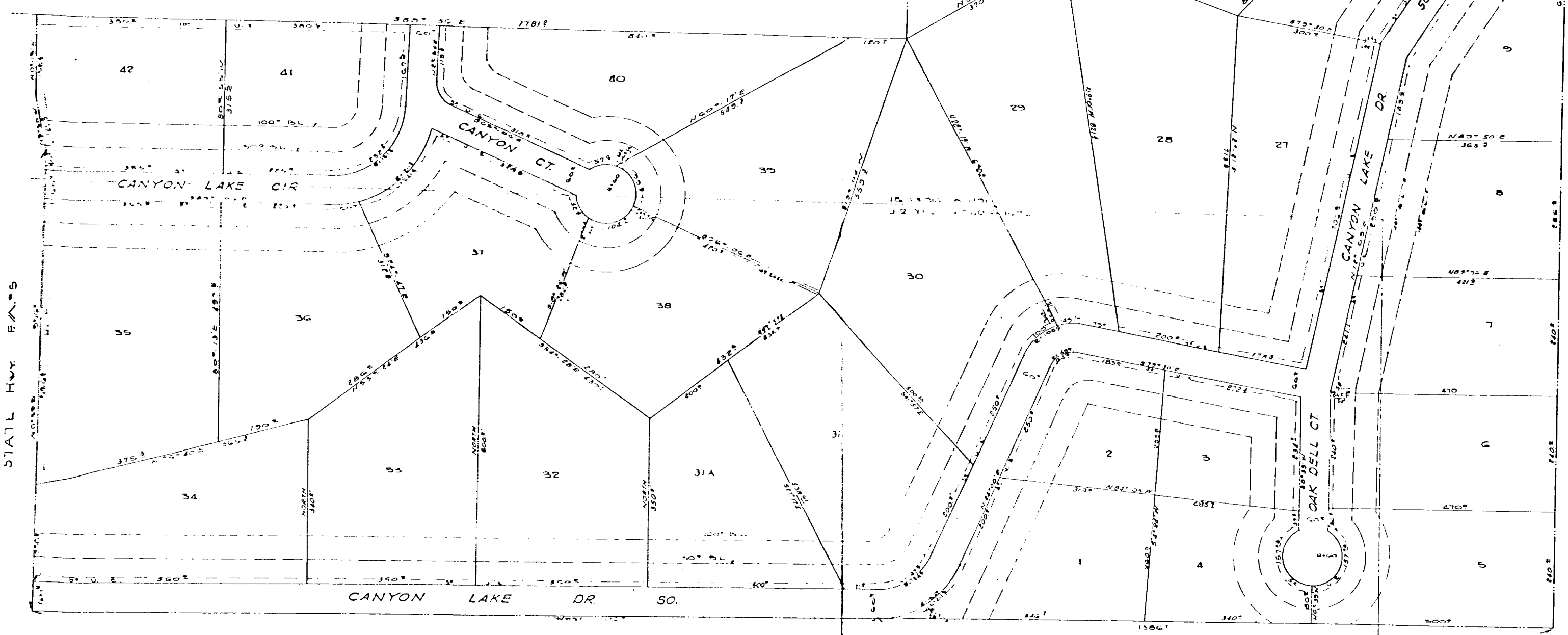


J. W. HORTON SUR  
A-660

D. GRICE SUR  
A-327

R. ELKINS SUR  
A-442

I. G. N. R. R. CO SUR  
A-1814



### CANYON LAKE ESTATES

OUT OF THE  
I. G. N. R. R. CO. SURVEY NO. 2 PLK. B  
AND J. R. YERION SURVEY ABSTRACT 1022  
PARKER COUNTY, TEXAS

West Surveying Co.  
1000 West 10th Street  
Fort Worth, Texas 76102  
Phone JE 8-1144

