

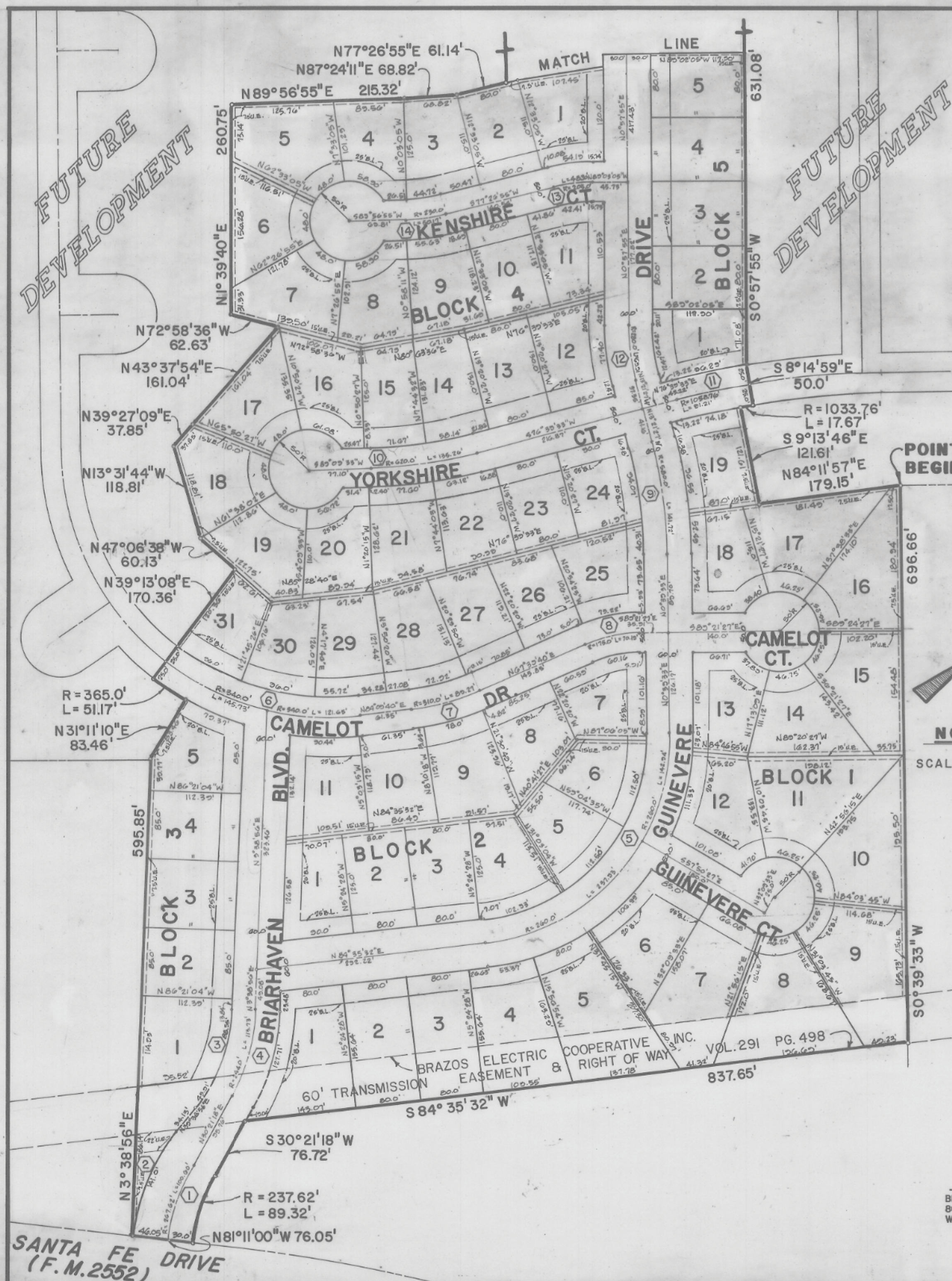
CITY OF WEATHERFORD, TEXAS

PLAT APPROVED DATE: 10-12-78

BY:

MAYOR
Jack L. Edson M.P.
 MAYOR PRO-TEM
John Hunter
 COMMISSIONER
Jimmy Kempf
 COMMISSIONER
Beri Barnes Darley
 COMMISSIONER

CURVE DATA				
CURVE NO.	DELTA	RADIUS	LENGTH	TANGENT
1	21°32'18"	267.62'	100.60'	50.90'
2	30°49'56"	262.02'	141.00'	72.25'
3	36°00'00"	214.00'	134.46'	69.53'
4	26°42'22"	244.00'	113.73'	57.91'
5	83°55'59"	260.00'	380.87'	233.83'
6	45°03'28"	340.00'	267.37'	141.03'
7	16°30'00"	310.00'	89.27'	44.94'
8	22°58'53"	175.00'	70.19'	35.57'
9	14°00'00"	580.00'	141.72'	71.21'
10	12°30'00"	620.00'	135.26'	67.90'
11	4°56'09"	1058.76'	91.21'	45.63'
12	14°18'22"	280.00'	69.91'	35.13'
13	13°30'00"	206.00'	48.30'	24.26'
14	12°30'00"	230.00'	60.17'	25.18'



I CERTIFY THAT THIS PLAT WAS COMPUTED FROM A BOUNDARY SURVEY MADE ON THE GROUND IN APRIL 1978 BY L.O. MITCHELL SURVEYORS AND CORRECTLY REPRESENTS FACTS FOUND DURING THIS SURVEY.
D.E. Farrington P.E.



SECTION I
BRIARWOOD

AN ADDITION CONTAINING 28.02 ACRES
 TO
 THE CITY OF WEATHERFORD, PARKER COUNTY, TEXAS

OWNER/DEVELOPER
 BRIARWOOD DEVELOPMENT CORP.
 801 N. MAIN STREET
 WEATHERFORD, TEXAS 76086

ENGINEERS/PLANNERS
 FARRINGTON AND ASSOC. INC.
 4410 W. VICKERY BLVD.
 FORT WORTH, TEXAS 76107

SANTA FE DRIVE
 (F.M. 2552)