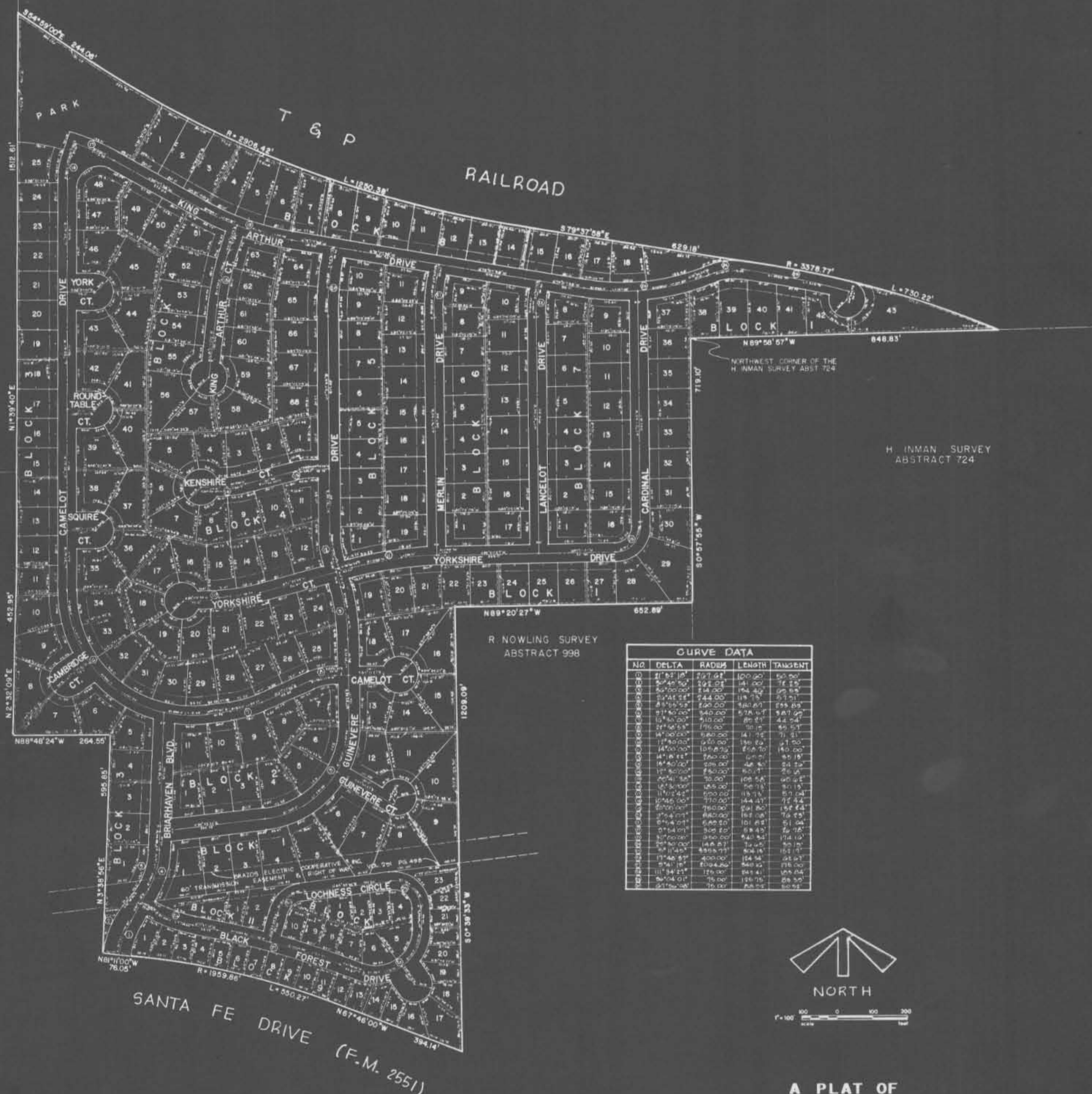


E MILLER SURVEY  
ABSTRACT 890



R. NOWLING SURVEY  
ABSTRACT 998

NO.	DELTA	RADIUS	LENGTH	TANGENT
1	21° 52' 18"	100.00	33.90	33.90
2	50° 46' 50"	100.00	71.25	71.25
3	50° 46' 50"	100.00	71.25	71.25
4	21° 52' 18"	100.00	33.90	33.90
5	111° 35' 52"	100.00	159.88	159.88
6	111° 35' 52"	100.00	159.88	159.88
7	111° 35' 52"	100.00	159.88	159.88
8	111° 35' 52"	100.00	159.88	159.88
9	111° 35' 52"	100.00	159.88	159.88
10	111° 35' 52"	100.00	159.88	159.88
11	111° 35' 52"	100.00	159.88	159.88
12	111° 35' 52"	100.00	159.88	159.88
13	111° 35' 52"	100.00	159.88	159.88
14	111° 35' 52"	100.00	159.88	159.88
15	111° 35' 52"	100.00	159.88	159.88
16	111° 35' 52"	100.00	159.88	159.88
17	111° 35' 52"	100.00	159.88	159.88
18	111° 35' 52"	100.00	159.88	159.88
19	111° 35' 52"	100.00	159.88	159.88
20	111° 35' 52"	100.00	159.88	159.88
21	111° 35' 52"	100.00	159.88	159.88
22	111° 35' 52"	100.00	159.88	159.88
23	111° 35' 52"	100.00	159.88	159.88
24	111° 35' 52"	100.00	159.88	159.88
25	111° 35' 52"	100.00	159.88	159.88
26	111° 35' 52"	100.00	159.88	159.88
27	111° 35' 52"	100.00	159.88	159.88
28	111° 35' 52"	100.00	159.88	159.88
29	111° 35' 52"	100.00	159.88	159.88
30	111° 35' 52"	100.00	159.88	159.88
31	111° 35' 52"	100.00	159.88	159.88
32	111° 35' 52"	100.00	159.88	159.88
33	111° 35' 52"	100.00	159.88	159.88
34	111° 35' 52"	100.00	159.88	159.88
35	111° 35' 52"	100.00	159.88	159.88
36	111° 35' 52"	100.00	159.88	159.88
37	111° 35' 52"	100.00	159.88	159.88
38	111° 35' 52"	100.00	159.88	159.88
39	111° 35' 52"	100.00	159.88	159.88
40	111° 35' 52"	100.00	159.88	159.88
41	111° 35' 52"	100.00	159.88	159.88
42	111° 35' 52"	100.00	159.88	159.88
43	111° 35' 52"	100.00	159.88	159.88
44	111° 35' 52"	100.00	159.88	159.88
45	111° 35' 52"	100.00	159.88	159.88
46	111° 35' 52"	100.00	159.88	159.88
47	111° 35' 52"	100.00	159.88	159.88
48	111° 35' 52"	100.00	159.88	159.88
49	111° 35' 52"	100.00	159.88	159.88
50	111° 35' 52"	100.00	159.88	159.88
51	111° 35' 52"	100.00	159.88	159.88
52	111° 35' 52"	100.00	159.88	159.88
53	111° 35' 52"	100.00	159.88	159.88
54	111° 35' 52"	100.00	159.88	159.88
55	111° 35' 52"	100.00	159.88	159.88
56	111° 35' 52"	100.00	159.88	159.88
57	111° 35' 52"	100.00	159.88	159.88
58	111° 35' 52"	100.00	159.88	159.88
59	111° 35' 52"	100.00	159.88	159.88
60	111° 35' 52"	100.00	159.88	159.88
61	111° 35' 52"	100.00	159.88	159.88
62	111° 35' 52"	100.00	159.88	159.88
63	111° 35' 52"	100.00	159.88	159.88
64	111° 35' 52"	100.00	159.88	159.88
65	111° 35' 52"	100.00	159.88	159.88
66	111° 35' 52"	100.00	159.88	159.88
67	111° 35' 52"	100.00	159.88	159.88
68	111° 35' 52"	100.00	159.88	159.88
69	111° 35' 52"	100.00	159.88	159.88
70	111° 35' 52"	100.00	159.88	159.88
71	111° 35' 52"	100.00	159.88	159.88
72	111° 35' 52"	100.00	159.88	159.88
73	111° 35' 52"	100.00	159.88	159.88
74	111° 35' 52"	100.00	159.88	159.88
75	111° 35' 52"	100.00	159.88	159.88
76	111° 35' 52"	100.00	159.88	159.88
77	111° 35' 52"	100.00	159.88	159.88
78	111° 35' 52"	100.00	159.88	159.88
79	111° 35' 52"	100.00	159.88	159.88
80	111° 35' 52"	100.00	159.88	159.88
81	111° 35' 52"	100.00	159.88	159.88
82	111° 35' 52"	100.00	159.88	159.88
83	111° 35' 52"	100.00	159.88	159.88
84	111° 35' 52"	100.00	159.88	159.88
85	111° 35' 52"	100.00	159.88	159.88
86	111° 35' 52"	100.00	159.88	159.88
87	111° 35' 52"	100.00	159.88	159.88
88	111° 35' 52"	100.00	159.88	159.88
89	111° 35' 52"	100.00	159.88	159.88
90	111° 35' 52"	100.00	159.88	159.88
91	111° 35' 52"	100.00	159.88	159.88
92	111° 35' 52"	100.00	159.88	159.88
93	111° 35' 52"	100.00	159.88	159.88
94	111° 35' 52"	100.00	159.88	159.88
95	111° 35' 52"	100.00	159.88	159.88
96	111° 35' 52"	100.00	159.88	159.88
97	111° 35' 52"	100.00	159.88	159.88
98	111° 35' 52"	100.00	159.88	159.88
99	111° 35' 52"	100.00	159.88	159.88
100	111° 35' 52"	100.00	159.88	159.88



A PLAT OF  
**BRIARWOOD**

AN ADDITION TO  
THE CITY OF WEATHERFORD, PARKER COUNTY, TEXAS  
SHOWING A TRACT OF LAND OUT OF THE RICHARD  
NOWLING SURVEY ABSTRACT NO. 998.

OWNER / DEVELOPER  
BRIARWOOD DEVELOPMENT CORP  
801 N. MAIN STREET  
WEATHERFORD, TEXAS 76086

ENGINEERS / LANDPLANNERS  
FARRINGTON AND ASSOC. INC.  
4410 W. VICKERY BLVD.  
FORT WORTH, TEXAS 76107

SEPT. 1978