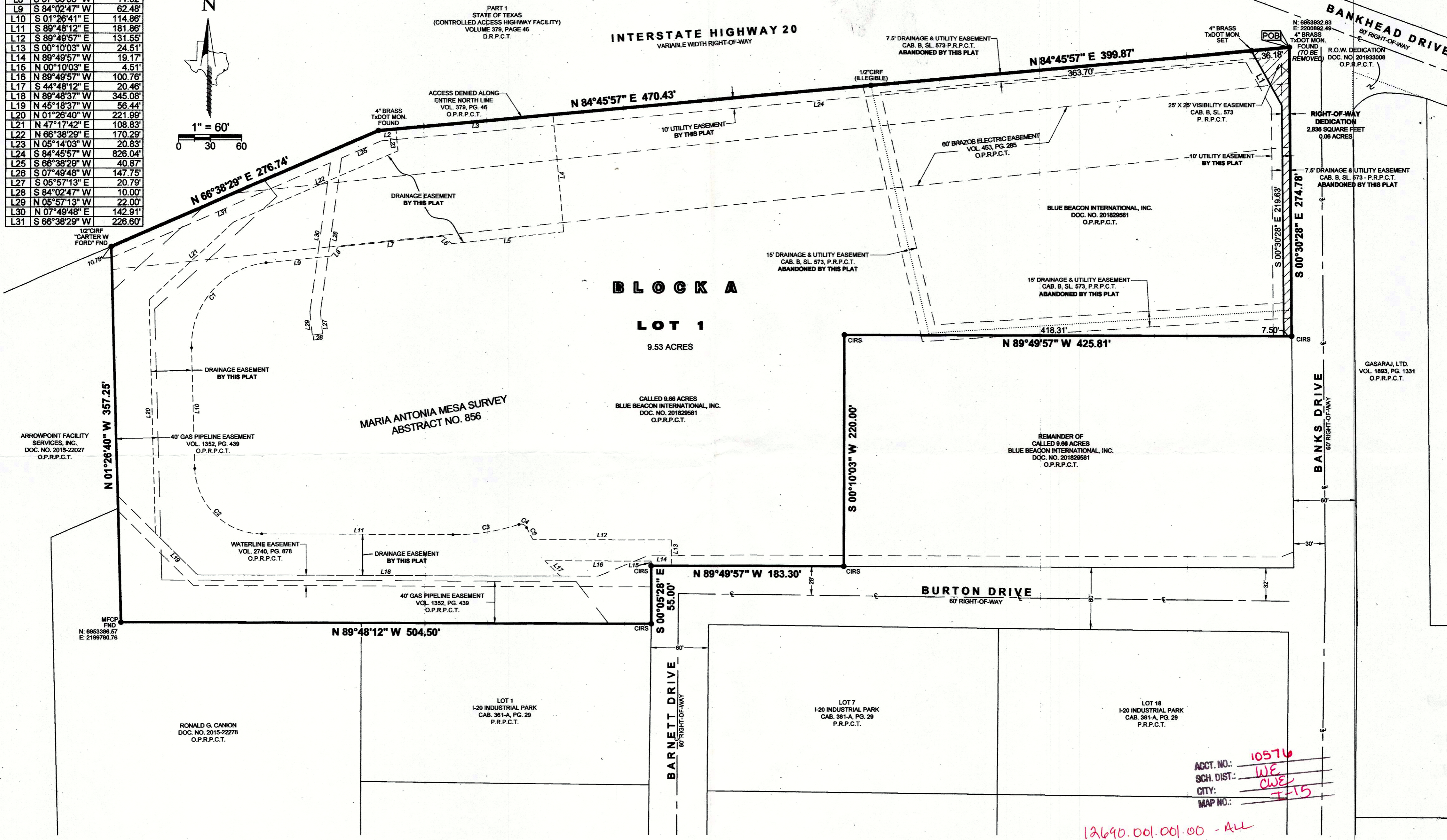
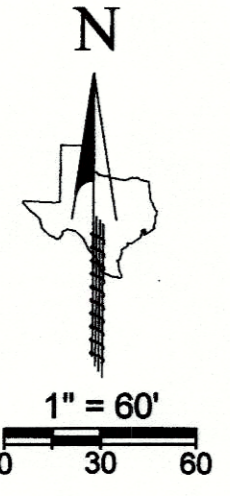


LINE	BEARING	DISTANCE	CURVE	ARC LENGTH	RADIUS	DELTA ANGLE	CHORD BEARING	CHORD LENGTH
L1	S 29°14'21" E	59.40'	C1	117.87'	79.00'	85°29'24"	S 41°18'05" W	107.24'
L2	N 84°45'57" E	16.72'	C2	98.69'	63.99'	88°21'46"	S 45°37'26" E	89.20'
L3	N 84°46'09" E	150.00'	C3	63.93'	204.00'	17°57'16"	N 81°13'16" E	63.67'
L4	S 05°14'03" E	111.70'	C4	8.68'	6.00'	82°53'00"	N 66°18'46" E	7.94'
L5	S 84°02'47" W	106.69'	C5	12.81'	128.00'	05°44'04"	S 27°44'18" E	12.81'
L6	N 49°05'36" W	10.96'						
L7	S 84°02'47" W	100.34'						
L8	S 37°30'53" W	11.02'						
L9	S 84°02'47" W	62.48'						
L10	S 01°26'41" E	114.86'						
L11	S 89°48'12" E	181.86'						
L12	S 89°49'57" E	131.55'						
L13	S 00°10'03" W	24.51'						
L14	N 89°49'57" W	19.17'						
L15	N 00°10'03" E	4.51'						
L16	N 89°49'57" W	100.76'						
L17	S 44°48'12" E	20.46'						
L18	N 89°48'37" W	345.08'						
L19	N 45°18'37" W	56.44'						
L20	N 01°26'40" W	221.99'						
L21	N 47°17'42" E	108.83'						
L22	N 66°38'29" E	170.29'						
L23	N 05°14'03" W	20.83'						
L24	S 84°45'57" W	826.04'						
L25	S 66°38'29" W	40.87'						
L26	S 07°49'48" W	147.75'						
L27	S 05°57'13" E	20.79'						
L28	S 84°02'47" W	10.00'						
L29	N 05°57'13" W	22.00'						
L30	N 07°49'48" E	142.91'						
L31	S 66°38'29" W	226.60'						



Project  
1805.019-04

Date  
04/01/2020

Drafter  
TAR

**EAGLE SURVEYING, LLC**  
 210 S. Elm Street, Suite: 104  
 Denton, TX 76201  
 (940) 222-3009  
 TX Firm #10194177

**SURVEYOR**  
 Eagle Surveying, LLC  
 210 S. Elm Street, Suite: 104  
 Denton, TX 76201  
 (940) 222-3009

**ENGINEER**  
 Claymore Engineering, Inc. Blue Beacon International, Inc.  
 Contact: Matt Moore  
 1903 Central Drive, Suite: 406  
 Bedford, TX 76021  
 (817) 281-0572

**OWNER**  
 Blue Beacon International, Inc.  
 Contact: David Johnson  
 500 Graves Blvd.  
 Salina, KS 67401  
 (785) 825-2221

**LEGEND**

- PG = PAGE
- POB = POINT OF BEGINNING
- CAB = CABINET
- MFCP = METAL FENCE CORNER POST
- CIRF = CAPPED IRON ROD FOUND
- IRF = IRON ROD FOUND
- IPF = IRON PIPE FOUND
- CIRS = 1/2" IRON ROD WITH GREEN PLASTIC CAP STAMPED "EAGLE SURVEYING" SET
- P.R.P.C.T. = PLAT RECORDS, PARKER COUNTY, TEXAS

ACCT. NO.: 10576  
 SCH. DIST.: WE  
 CITY: CWEL  
 MAP NO.: T-15

12690.001.001.00 - ALL  
 20856.013.010.00

**FINAL PLAT**  
**BLUE BEACON ADDITION**  
 LOT 1, BLOCK A  
 9.59 ACRES

A REPLAT OF LOT 1 OF GASARAJ ADDITION,  
 RECORDED IN CABINET B, SLIDE 573, P.R.P.C.T.,  
 MARIA ANTONIO MESA SURVEY, ABSTRACT No. 856,  
 CITY OF WEATHERFORD, PARKER COUNTY, TEXAS