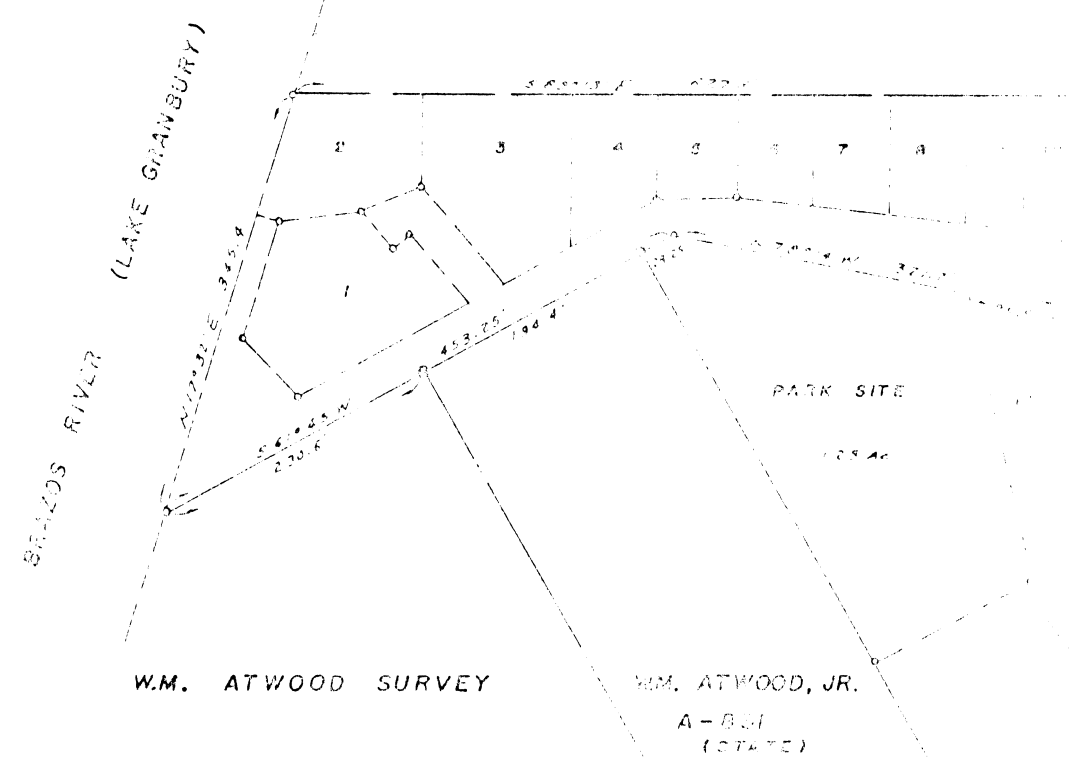
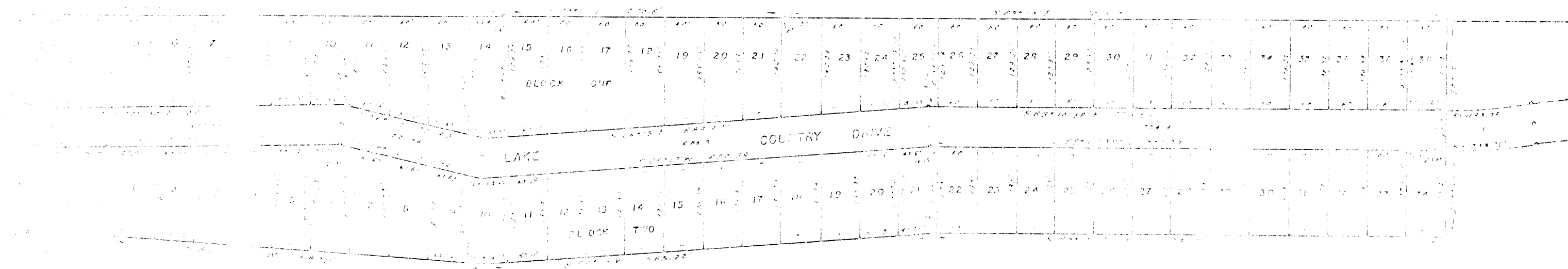


A-347



A-20



JOHN B. ATWOOD SURVEY
A-2515 PARKER

A-202 HOOD

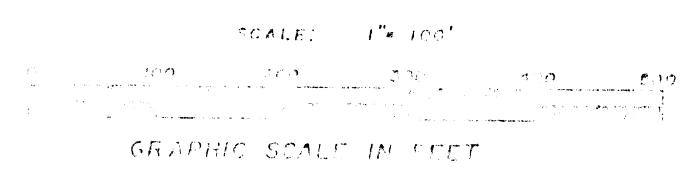
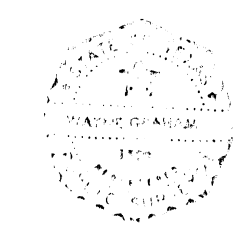
PARKER COUNTY
HOOD COUNTY

**BIG TIMBER ESTATES
SECTION 5**
BEING A SUBDIVISION OF 17.02 ACRES
OUT OF THE JOHN B. ATWOOD SURVEY
A-2515, PARKER COUNTY, TEXAS.

NOTE: THERE IS A 10' UTILITY EASEMENT
ON ALL FRONT & REAR LOT LINES
AND 5' UTILITY EASEMENT ON ALL
SIDE LOT LINES.

DEVELOPED BY:
TIMBERLAND ESTATES, INC.

I, Walter B. Lane, a REGISTERED PUBLIC
SURVEYOR OF THE STATE OF TEXAS DO HEREBY
CERTIFY THAT THIS PLAT IS TRUE AND CORRECT
TO THE BEST OF MY KNOWLEDGE & BELIEF
APRIL 13, 1981.



558490
RECEIVED AND FILED
FOR RECORD
OCT 11 1982
CARRIE REED, Co. Clerk
PARKER COUNTY, TEXAS
By: [Signature] Deputy
10.09

STATE OF TEXAS COUNTY OF PARKER
I hereby certify that this instrument was filed
on the date and time stamped hereon by me and
was duly recorded in the volume and page of the
public records of Parker County as stamped here-
on by me.
RECORDED OCT 11 1982
SEAL
Carrie Reed
County Clerk, Parker County, Tex.

Book
362A
Pg 11