

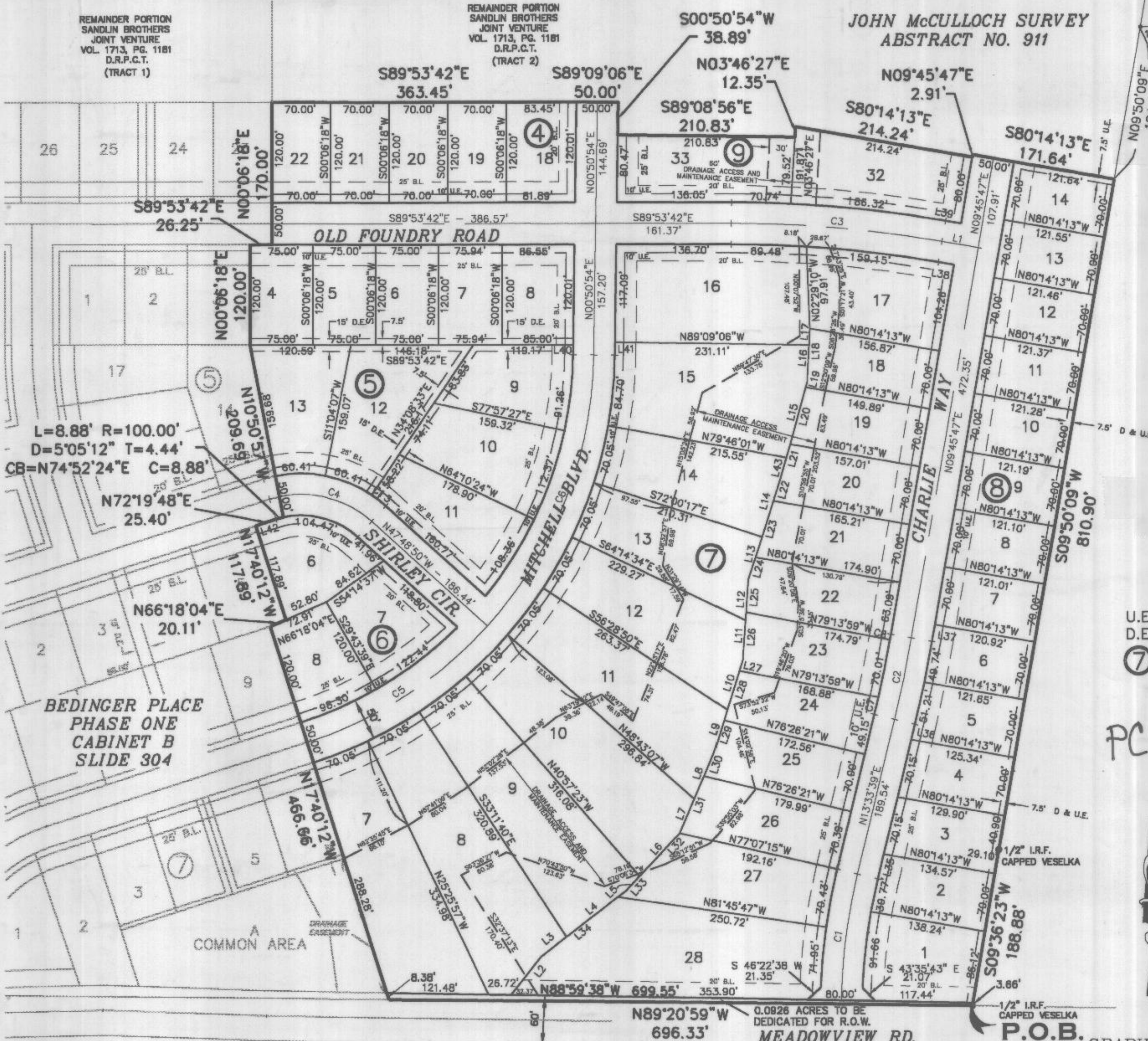
REMAINDER PORTION  
SANDLIN BROTHERS  
JOINT VENTURE  
VOL. 1713, PG. 1181  
D.R.P.C.T.  
(TRACT 1)

REMAINDER PORTION  
SANDLIN BROTHERS  
JOINT VENTURE  
VOL. 1713, PG. 1181  
D.R.P.C.T.  
(TRACT 2)

JOHN McCULLOCH SURVEY  
ABSTRACT NO. 911

DENISE WORTHINGTON  
VOL. 1582, PG. 1073  
D.R.P.C.T.

1/2" I.R.F.



Doc 00429665 Bk OR Vol 1965 Pg 1357

FILED AND RECORDED  
OFFICIAL PUBLIC RECORDS  
On: Oct 30, 2001 at 02:13P

Document Number: 00429665

Amount: .00

By Patricia Nelson

STATE OF TEXAS COUNTY OF PARKER  
I hereby certify that this instrument was  
filed on the date and time stamped herein by me  
and was duly recorded in the volume and page  
of the named records of Parker County  
as stamped herein by me.

Oct 30, 2001

Jeanne Brunson, County Clerk  
Parker County

FRANCES G. BILLO  
VOL. 1461, PG. 1182  
D.R.P.C.T.

**LEGEND**

- U.E. = UTILITY EASEMENT
- D.E. = DRAINAGE EASEMENT
- ⑦ = BLOCK NO

PC: B 644



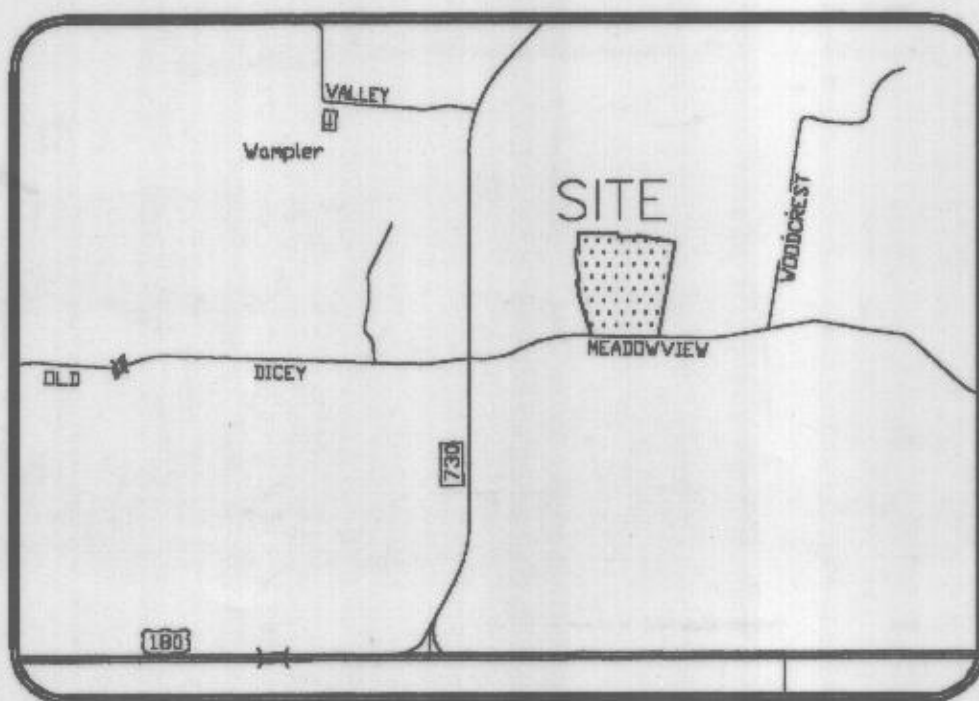
GRAPHIC SCALE



( IN FEET )  
1 inch = 100 ft.

LINE TABLE		
LINE	LENGTH	BEARING
L1	43.80	S80°14'13"E
L2	58.79	S38°30'09"W
L3	37.27	S52°25'41"W
L4	89.83	N52°25'41"E
L5	23.63	N43°08'10"E
L6	70.41	N43°08'10"E
L7	44.38	N23°03'14"E
L8	59.62	N23°03'14"E
L9	53.50	N17°01'48"E
L10	61.89	N17°01'48"E
L11	47.60	N04°06'12"E
L12	49.08	N04°06'12"E
L13	53.16	N17°38'21"E
L14	75.17	N17°38'21"E
L15	93.29	N15°34'16"E
L16	44.71	N02°57'50"E
L17	19.57	N02°57'50"E
L18	64.29	S02°57'50"W
L19	6.20	S15°34'16"W
L20	70.36	S15°34'16"W
L21	40.54	S15°34'16"W
L22	29.95	S17°38'21"W
L23	70.67	S17°38'21"W
L24	27.71	S17°38'21"W
L25	39.65	S04°06'12"W
L26	57.03	S04°06'12"W
L27	13.44	S17°01'48"W
L28	61.78	S17°01'48"W
L29	40.17	S17°01'48"W
L30	30.32	S23°03'14"W
L31	73.69	S23°03'14"W
L32	94.05	S43°08'10"W
L33	12.21	S52°25'41"W
L34	114.89	S52°25'41"W
L35	30.33	N13°33'39"E
L36	18.90	N13°33'39"E
L37	20.27	N09°45'47"E
L38	18.80	S80°14'13"E
L39	18.80	S80°14'13"E
L40	11.87	S00°50'54"W
L41	15.44	S00°50'54"W
L42	25.40	N72°19'48"E
L43	23.81	S15°34'16"W

CURVE TABLE					
CURVE	LENGTH	RADIUS	TANGENT	CHORD LENGTH	CHORD BEARING
C1	150.97	702.00	75.78	150.68	S07°24'00"W
C2	99.29	1498.00	49.67	99.28	N11°39'43"E
C3	252.84	1500.00	126.72	252.54	N85°03'57"W
C4	118.73	125.00	64.27	114.32	N75°01'31"W
C5	258.90	492.10	132.52	255.92	N57°15'29"E
C6	355.04	492.10	185.64	347.39	N21°31'02"E
C7	20.76	1473.00	10.38	20.76	N13°09'26"E
C8	6.87	1473.00	3.44	6.87	N09°53'48"E
C13	21.06	150.00	10.55	21.04	N51°50'08"W



VICINITY MAP

**FINAL PLAT**  
**BEDINGER PLACE**  
PHASE TWO  
21.543 ACRE TRACT OF LAND  
IN THE JOHN McCULLOCH SURVEY A-911  
CITY OF WEATHERFORD  
PARKER COUNTY, TEXAS

vima

veselka+mycoskie+associates  
civil engineering-planting-landscape-architecture-surveying

200 east abram  
arlington, texas 76010  
817-469-1671  
fax: 817-274-8757  
e-mail: vma vma-inc.com