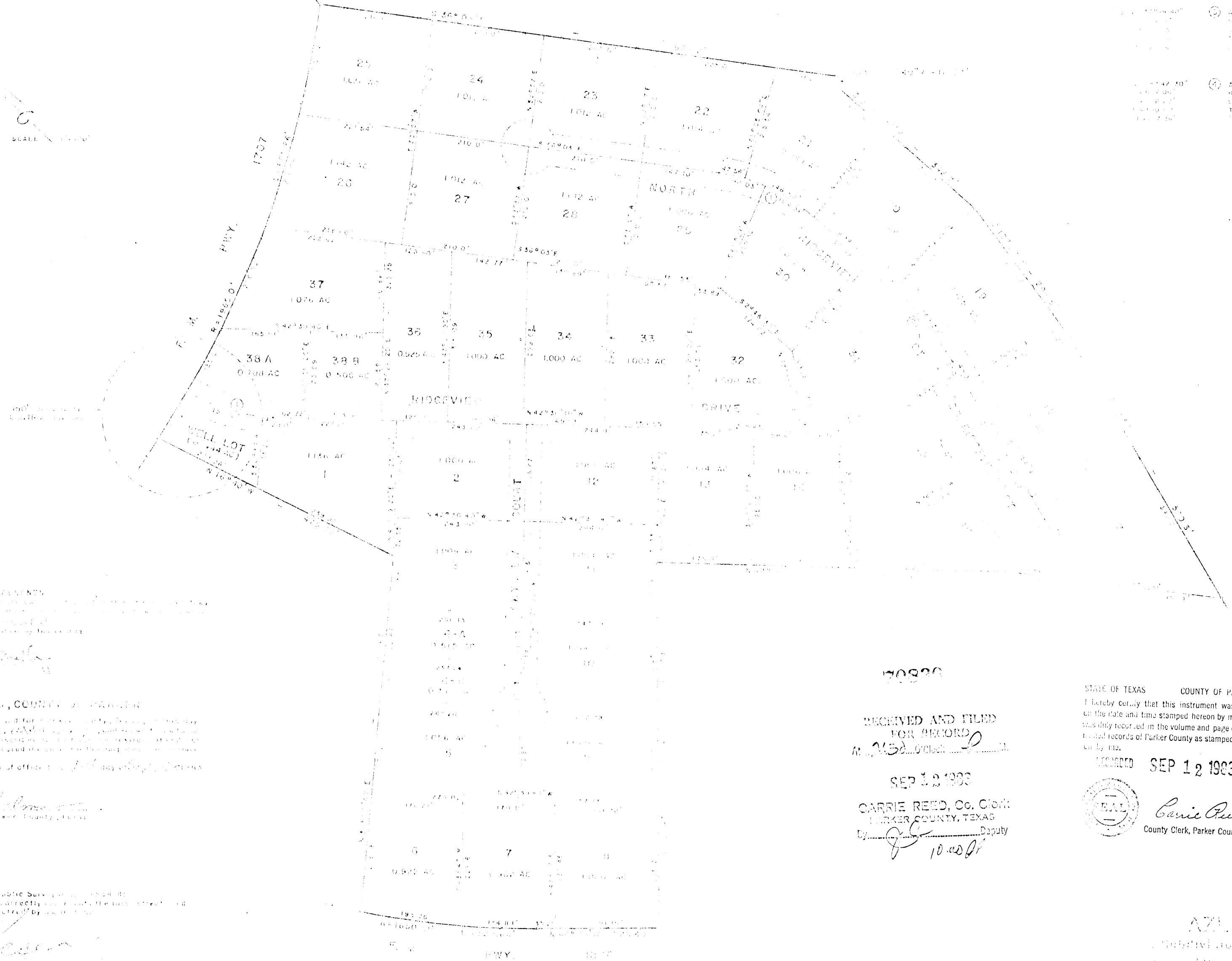
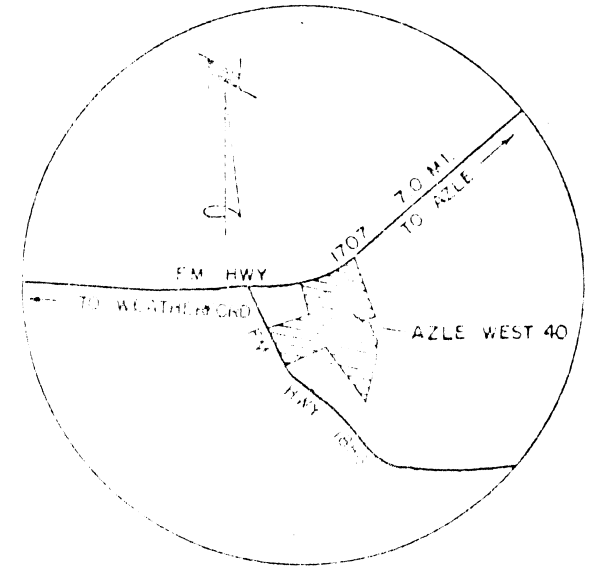


N.E. COR. 27 1/2 AC. TR. 12486111  
IN TRUST FOR THE WHITE TRUSTEE  
BY DEED OF JAMES B. WHITE  
TO THE STATE OF TEXAS  
WEST 1/4 SEC. 27 T. 10 N. R. 10 E. CO. 10  
N.E. COR. 27 1/2 AC. TR. 12486111

CURVE DATA

1. 110.00'	2. 110.00'
3. 110.00'	4. 110.00'
5. 110.00'	6. 110.00'
7. 110.00'	8. 110.00'
9. 110.00'	10. 110.00'
11. 110.00'	12. 110.00'
13. 110.00'	14. 110.00'
15. 110.00'	16. 110.00'
17. 110.00'	18. 110.00'
19. 110.00'	20. 110.00'
21. 110.00'	22. 110.00'
23. 110.00'	24. 110.00'
25. 110.00'	26. 110.00'
27. 110.00'	28. 110.00'
29. 110.00'	30. 110.00'
31. 110.00'	32. 110.00'
33. 110.00'	34. 110.00'
35. 110.00'	36. 110.00'
37. 110.00'	38. 110.00'
39. 110.00'	40. 110.00'
41. 110.00'	42. 110.00'
43. 110.00'	44. 110.00'
45. 110.00'	46. 110.00'
47. 110.00'	48. 110.00'
49. 110.00'	50. 110.00'
51. 110.00'	52. 110.00'
53. 110.00'	54. 110.00'
55. 110.00'	56. 110.00'
57. 110.00'	58. 110.00'
59. 110.00'	60. 110.00'
61. 110.00'	62. 110.00'
63. 110.00'	64. 110.00'
65. 110.00'	66. 110.00'
67. 110.00'	68. 110.00'
69. 110.00'	70. 110.00'
71. 110.00'	72. 110.00'
73. 110.00'	74. 110.00'
75. 110.00'	76. 110.00'
77. 110.00'	78. 110.00'
79. 110.00'	80. 110.00'
81. 110.00'	82. 110.00'
83. 110.00'	84. 110.00'
85. 110.00'	86. 110.00'
87. 110.00'	88. 110.00'
89. 110.00'	90. 110.00'
91. 110.00'	92. 110.00'
93. 110.00'	94. 110.00'
95. 110.00'	96. 110.00'
97. 110.00'	98. 110.00'
99. 110.00'	100. 110.00'



County Clerk  
Notary Public  
I, the undersigned, being duly qualified and sworn to as such, do hereby certify that the foregoing is a true and correct copy of the original instrument filed for record in my office on the date and time hereon stamped.

THE STATE OF TEXAS, COUNTY OF PARKER  
I, the undersigned, being duly qualified and sworn to as such, do hereby certify that the foregoing is a true and correct copy of the original instrument filed for record in my office on the date and time hereon stamped.

Notary Public  
I, the undersigned, being duly qualified and sworn to as such, do hereby certify that the foregoing is a true and correct copy of the original instrument filed for record in my office on the date and time hereon stamped.

County Commissioners  
I, the undersigned, being duly qualified and sworn to as such, do hereby certify that the foregoing is a true and correct copy of the original instrument filed for record in my office on the date and time hereon stamped.

170830  
RECEIVED AND FILED  
FOR RECORD  
M. M. S. OCT 10 1933  
SEP 12 1933  
CARRIE REED, Co. CLERK  
PARKER COUNTY, TEXAS  
Deputy

STATE OF TEXAS COUNTY OF PARKER  
I hereby certify that this instrument was filed on the date and time stamped hereon by me and was duly recorded in the volume and page of the public records of Parker County as stamped hereon by me.  
RECORDED SEP 12 1933  
Carrie Reed  
County Clerk, Parker County, Tex.



AZLE WEST 40  
Subdivided into 40 lots  
Parker County, Texas  
Carrie Reed  
County Clerk

Six additional pages  
under this page