

41349

RECEIVED AND FILED FOR RECORD AT 1:20 O'Clock P.M.

AUG 27 1975

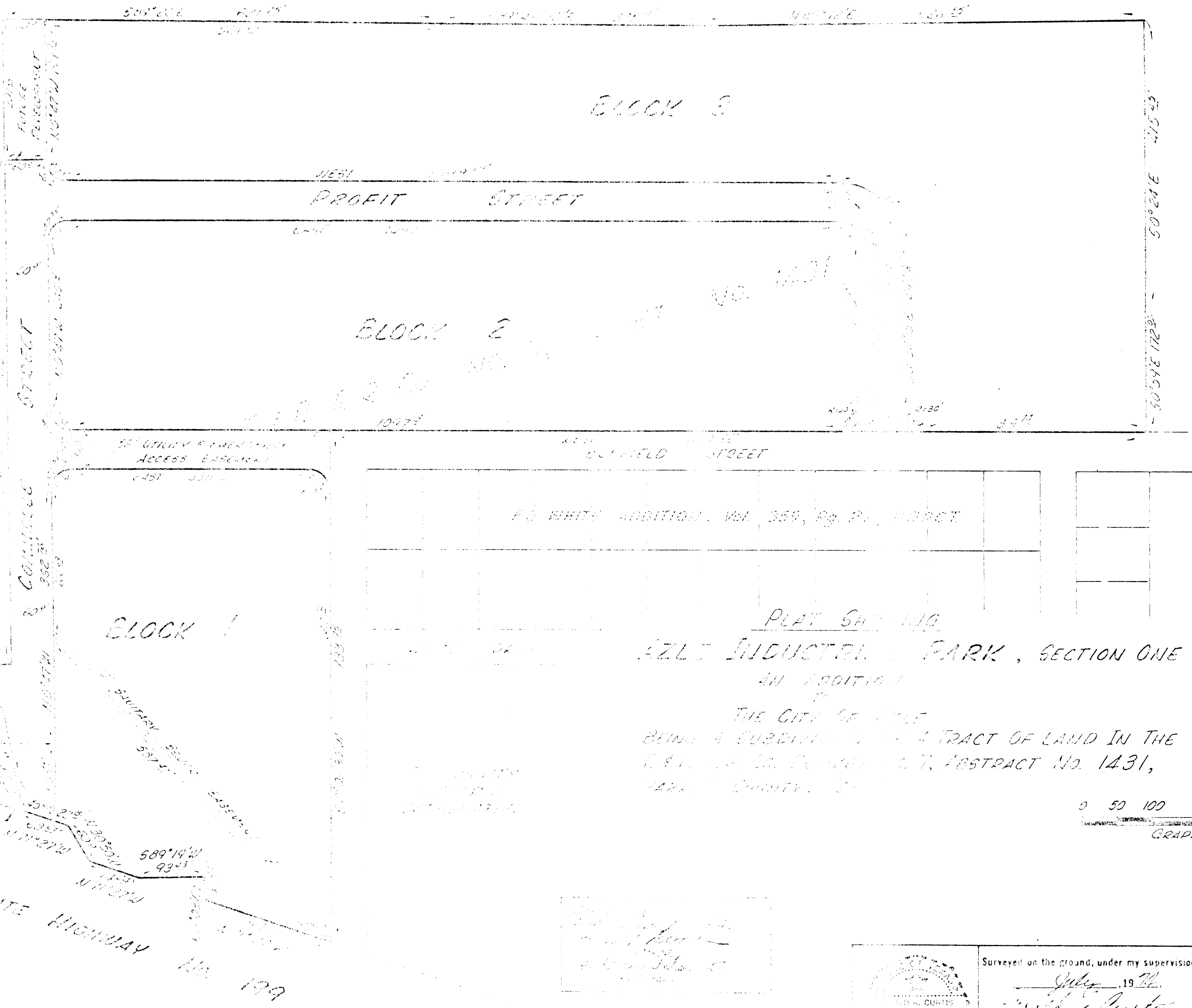
T. H. "Tommy" McDANIEL, Co. Clerk PARKER COUNTY, TEXAS

By S.P.D. Deputy

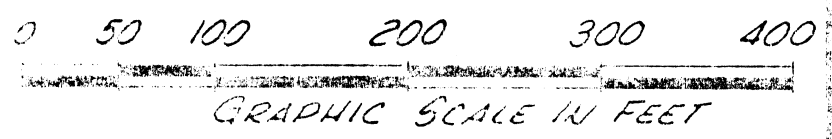
STATE OF TEXAS COUNTY OF PARKER I hereby certify that this instrument was filed on the date and time stamped hereon by me and was duly recorded on the 27 day of August A.D., 1975, in Vol. 360, page 56, of the Plat records of Parker, Texas



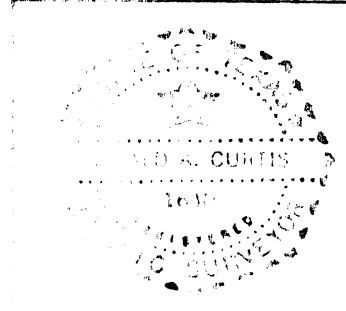
J. H. "Tommy" McDaniel County Clerk, Parker County, Texas



PLAT 542119 AZLE INDUSTRIAL PARK, SECTION ONE AN ADDITION TO THE CITY OF AZLE BEING A SUBDIVISION OF A TRACT OF LAND IN THE T. H. CO. COMPANY, A. T. ABSTRACT NO. 1431, PARK COUNTY, TEXAS



Surveyed on the ground, under my supervision, July 19 1974 Gerald A. Curtis



Surveyed on the ground, under my supervision, July 19 1974 Gerald A. Curtis

SURTEX, INC REGISTERED PUBLIC SURVEYORS R. A. HEFFINGTON GERALD A. CURTIS 2809 RACE STREET P. O. Box 7021 FORT WORTH, TEXAS 76111 817/834-7481

A-223