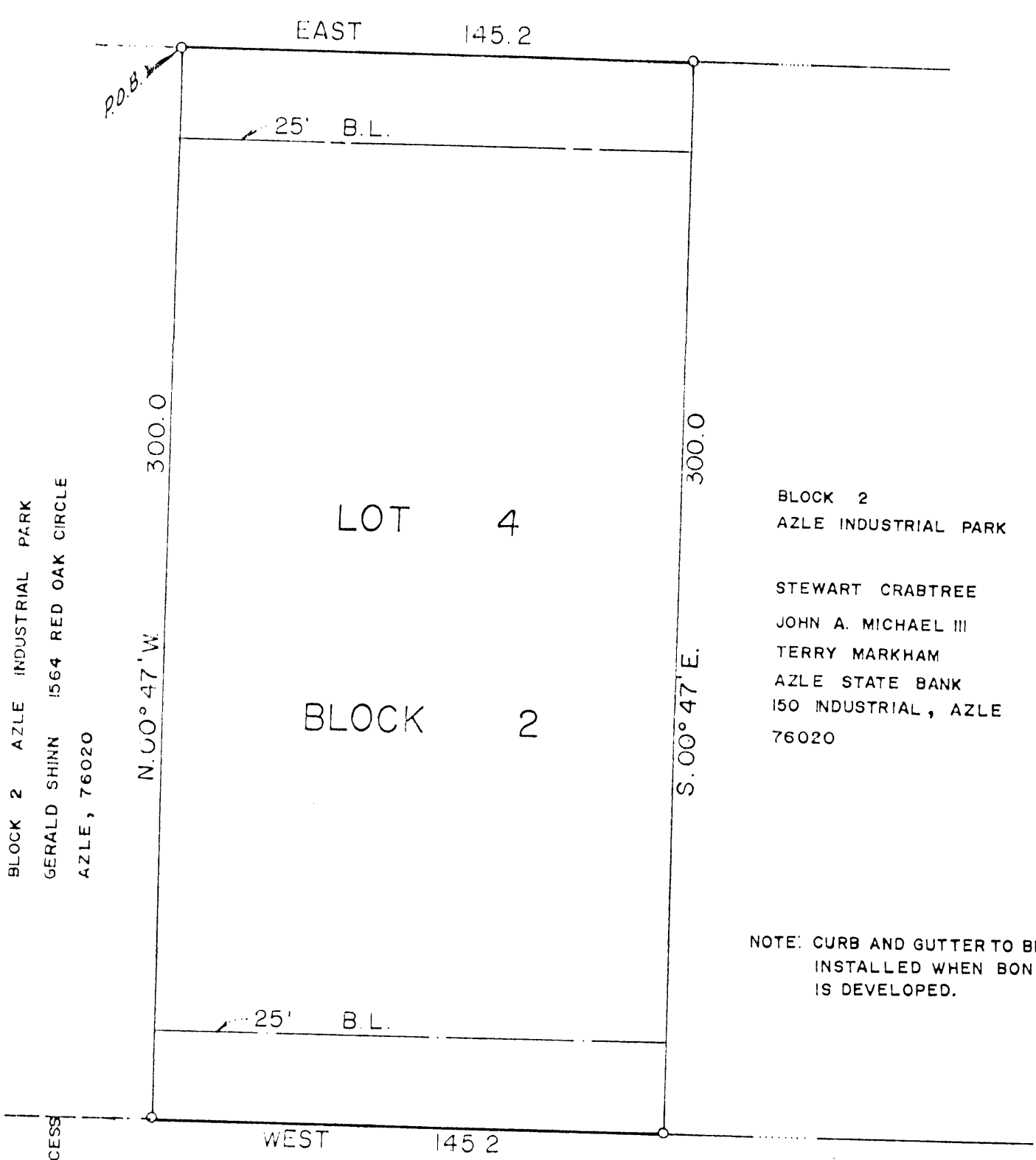


PROFIT STREET



BLOCK 2 AZLE INDUSTRIAL PARK
GERALD SHINN 1564 RED OAK CIRCLE
AZLE, 76020

56' UTILITY &
EMERGENCY ACCESS
ESMT.

MARCHMAN ST.
56' R.O.W.

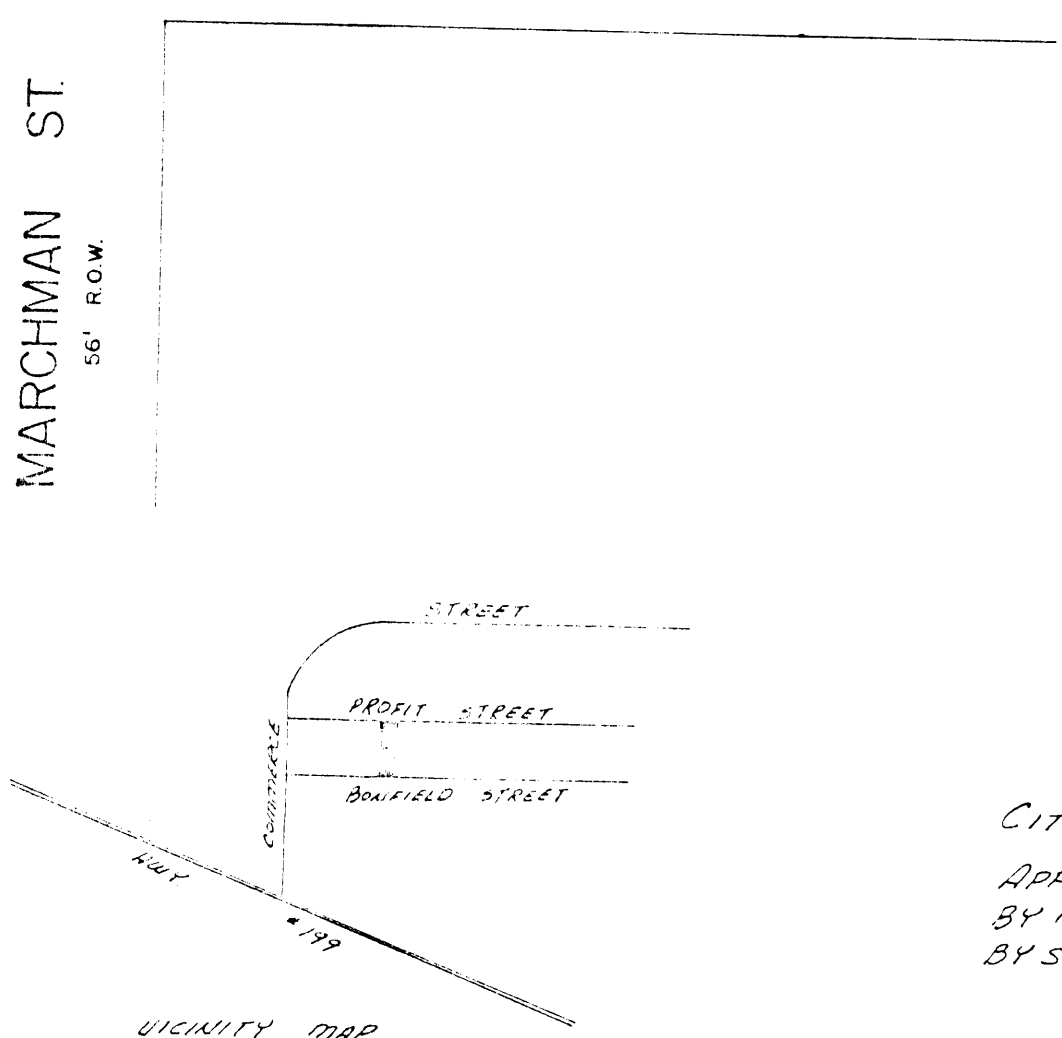
BLOCK 2
AZLE INDUSTRIAL PARK

STEWART CRABTREE
JOHN A. MICHAEL III
TERRY MARKHAM
AZLE STATE BANK
150 INDUSTRIAL, AZLE
76020

NOTE: CURB AND GUTTER TO BE
INSTALLED WHEN BONFIELD ST.
IS DEVELOPED.

SCALE: 1" = 40'

BONFIELD STREET
56' R.O.W.



VICINITY MAP

STATE OF TEXAS
COUNTY OF PARKER
DEDICATION

Whereas Paul Reed and Iona Reed, being the owners of a tract of land out of block 2, Azle Industrial Park, Section one, as shown on the plat recorded in vol. 360, pg. 56, Plat Records, Parker County, Texas, and being further more described by metes and bounds as follows;
Beginning at a point in the north line of said block 2 and the south line of Profit Street, said point being 405.19 feet East from the most northerly northwest corner of said block 2;
THENCE East, with said north line of block 2, and the south line of Profit Street, 145.2 feet to a iron pin for a corner;
THENCE S. 00°47'E., 300.0 feet to a iron pin for a corner in the north line of Bonfield Street;
THENCE West, with the north line of Bonfield Street, 145.2 feet to a iron pin for a corner;
THENCE N. 00°47'W., 300.0 feet to the point of beginning and containing 1.0 acre of land more or less.

NOW THEREFORE, KNOW ALL MEN BY THESE PRESENTS:
That Paul Reed and Iona Reed do hereby adopt this plat as Lot 4, Block 2, Azle Industrial Park, an addition to the City of Azle, Parker County, Texas, and does hereby dedicate to the publics use forever the streets and easements shown thereon.
WITNESS MY HAND AT PARKER COUNTY, TEXAS, the 17 day of May 1985.

Paul Reed
Paul Reed
Iona Reed
Iona Reed

STATE OF TEXAS
COUNTY OF PARKER

This instrument was acknowledged before me on 17 May 1985 by Paul Reed and Iona Reed.

Catherine E. Senor
Notary Public
10-29-88
My commission expires

PLAT SHOWING
LOT 4, BLOCK 2, AZLE INDUSTRIAL PARK, SECTION ONE,
AN ADDITION
TO
THE CITY OF AZLE
BEING A SUBDIVISION OF A TRACT OF LAND IN THE
T. & P. R. R. CO. SURVEY No. 7, ABSTRACT No. 1431,
PARKER COUNTY, TEXAS.

CITY OF AZLE, TEXAS
APPROVED 6-18-85
BY MAYOR: Chris Stone
BY SECRETARY: Sumi Shelton

PLANNING AND ZONING COMMISSION
APPROVED 6-16-85
BY CHAIRMAN: John B. Howard
BY SECRETARY: Travis Williams

111109
RECEIVED AND FILED
FOR RECORD
AT 3:00 Clock P.M.
SEP 12 1985
CARRIE REED, Co. Clerk
PARKER COUNTY, TEXAS
By Jo Deputy
BOOK 3634 51

STATE OF TEXAS COUNTY OF PARKER
I hereby certify that this instrument was filed on the date and time stamped hereon by me and was duly recorded in the volume and page of the named records of Parker County as stamped hereon by me.
RECORDED SEP 12 1985

Carrie Reed
County Clerk, Parker County, Tex.



Long Butt
SURVEYED ON THE GROUND
MAY, 1985.