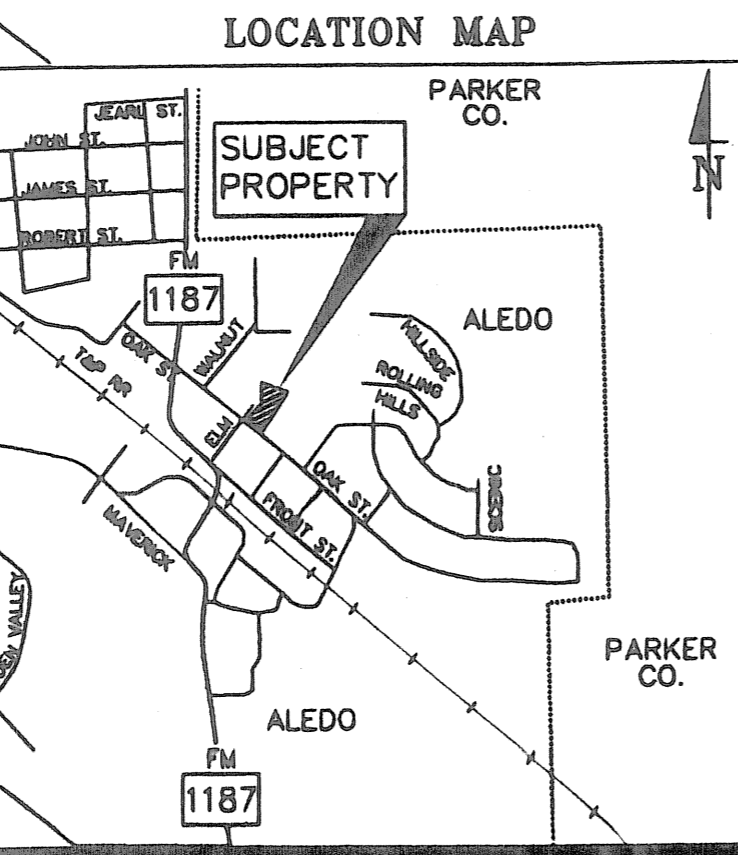


LOT 16R, BLOCK 15
ORIGINAL TOWN OF ALEDO
CAB. C, SLIDE 302
P.R.P.C.T.



LINE TABLE

LINE	BEARING	DISTANCE
L-1	N 50°07'38" W	1.38'
L-2	N 22°58'27" W	5.27'

T&D REAL ESTATE LIMITED, LLC
VOLUME 2389, PAGE 1835
D.R.P.C.T.

TOMMY ALLEN THOMPSON
LEANNA EMILY THOMPSON
VOLUME 2401, PAGE 622
D.R.P.C.T.

CITY OF ALEDO VOLUME
2539, PAGE 549
D.R.P.C.T.

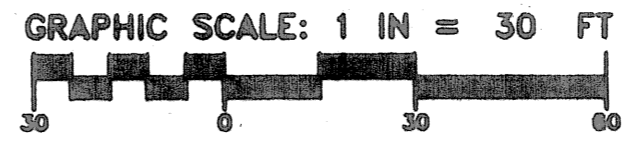
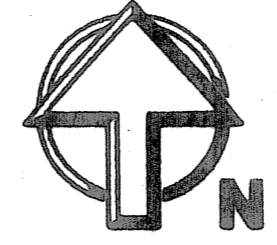
L.R. FAWKS SURVEY
ABSTRACT NO. 483

LOT 2
BLOCK 1

LOT 2, BLOCK 1
ALEDO CENTRAL PARK
CAB. C, SLIDE 639
P.R.P.C.T.

LOT 1, BLOCK 1
ALEDO CENTRAL PARK
CAB. C, SLIDE 639
P.R.P.C.T.

C696



Doc# 683828
Book 2644 Page 1588

APPROVAL OF THE PLAT SHALL BE INVALID UNLESS
THE APPROVED PLAT FOR SUCH ADDITION IS
RECORDED IN THE OFFICE OF THE COUNTY CLERK OF
PARKER COUNTY, TEXAS WITHIN SIX (6) MONTHS
FROM THE DATE OF FINAL APPROVAL BY THE ALEDO
CITY COUNCIL.

CITY OF ALEDO, TEXAS
CITY COUNCIL

NOTE:
THIS PLAT IS VALID ONLY IF RECORDED WITHIN SIX
(6) MONTHS AFTER DATE OF APPROVAL.

PLAT APPROVED DATE: March 24, 2008

BY: Kit Marshall
MAYOR

BY: Kathleen Wedell
CITY SECRETARY



I DO HEREBY CERTIFY THAT THIS
PLAT IS TRUE AND CORRECT AS
SURVEYED ON THE GROUND.

BY: Doug Burt
DOUG BURT, P.L.S. # 2023

DATE: 24 JUNE 08

CURRENT ZONING - C3 COMMERCIAL

FINAL PLAT

**LOTS 1 & 2, BLOCK 1
ALEDO TOWN VILLAGE**

BEING 0.51 ACRES OF LAND SITUATED IN THE
LR FAWKS SURVEY, ABSTRACT NUMBER 483 &
PORTION OF LOTS 10 & 11, BLOCK 3
ORIGINAL TOWN OF ALEDO
ALEDO, PARKER COUNTY, TEXAS

PREPARED FEBRUARY 26, 2008
REVISED MARCH 8, 2008
REVISED MAY 10, 2008
REVISED JUNE 9, 2008

SURVEYOR
TEXAS GEOSPATIAL
PO BOX 1029
ALEDO, TEXAS 76008
817.441.6199

ACCT. NO.: 10087
SCH. DIST.: AL
CITY: AL
MAP NO.: M-18

PREPARED BY

SD Engineering, Inc.

Site Development Engineering

PO Box 1357 Aledo, TX 76008-1357
(017) 441-6400 Fax (017) 441-6085
www.sd-engineering.com

SHEET 1 OF 2