

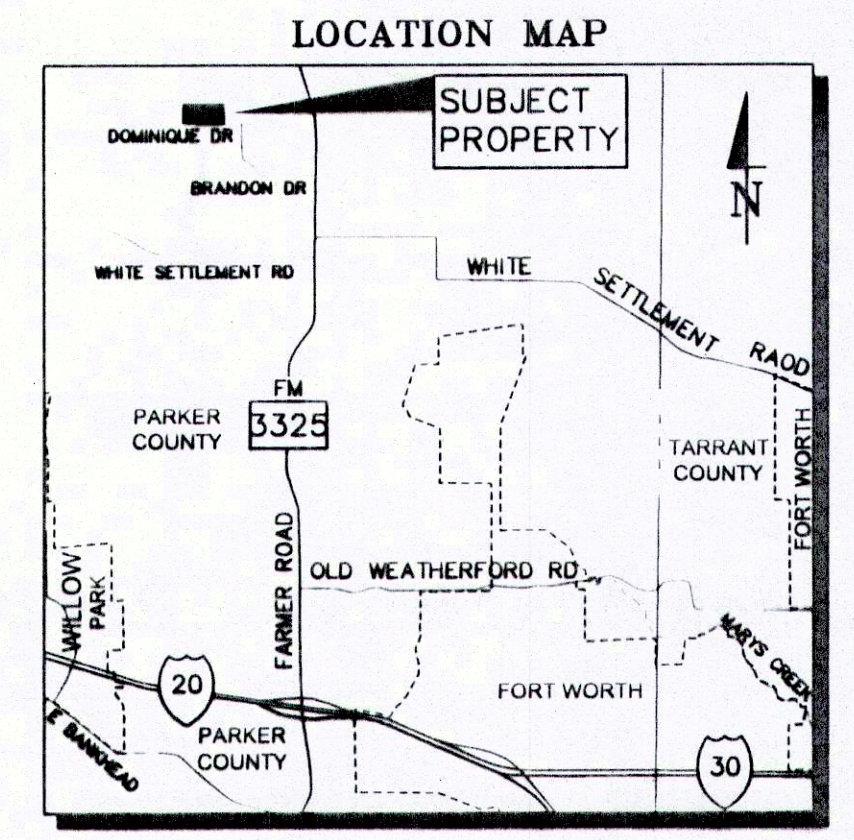
LAND USE DATA

TOTAL LAND AREA	36.256 ACRES
R-O-W DEDICATION	3,868 LF
TOTAL LOTS	28 RESIDENTIAL LOTS
ESTIMATED POPULATION	98 PERSONS
MINIMUM LOT SIZE	1.0 ACRES
MINIMUM LOT WIDTH	125'
MINIMUM LOT DEPTH	248'
PROPOSED LAND USE	SINGLE FAMILY RESIDENTIAL

PROPERTY LOCATED IN WEATHERFORD ETJ LIMITS.

STREET LENGTH TABLE

STREET	LENGTH
STREET A	942 LF
STREET B	818 LF
OWEN CIRCLE (N)	941 LF
OWEN CIRCLE (S)	349 LF
DOMINIQUE DRIVE	818 LF
TOTAL LENGTH OF STREET	3868 LF



OWNER/DEVELOPER
IMPORTANTE, L.P.
A TEXAS LIMITED PARTNERSHIP
 4011 BENBROOK BLVD., SUITE B
 FORT WORTH, TEXAS 76116
 817.626.2600

PROJECT SURVEYOR
LANDES & ASSOCIATES, INC.
 1107 EAST 1ST STREET
 FORT WORTH, TEXAS 76102
 817.870.1220

ACCT. NO.: 10073
 SCH. DIST.: AL
 CITY: NONE
 MAP NO.: M-13

FINAL PLAT

LOT 1, BLOCK A; LOTS 19-23, BLOCK B;
 LOTS 1-7, BLOCK C; LOTS 1-6, BLOCK D;
 LOTS 1-5, BLOCK E; LOTS 1-4, BLOCK F

ALEDO ESTATES

BEING 36.256 ACRES OF LAND SITUATED IN THE
 ROBERT CUNNINGHAM SURVEY, ABSTRACT NUMBER 283
 PARKER COUNTY, TEXAS

FEBRUARY 2013

PREPARED BY

SD Engineering, Inc.
 Site Development Engineering

PO Box 1357 Aledo, TX 76008-1357
 (817) 441-6400 Fax (817) 441-6085
 TEXAS REGISTERED ENGINEERING FIRM F-7643
 TEXAS REGISTERED SURVEYING FIRM 10095800

CURVE TABLE

CURVE	DELTA ANGLE	RADIUS	LENGTH	CHORD BEARING	CHORD
C1	02°49'34"	4000.00	197.31	N87°53'51"E	197.29
C2	02°49'34"	4000.00	197.31	N87°53'51"E	197.29

REVISED 05/31/13 CITY REVIEW COMMENTS
 REVISED 12/30/11 CITY REVIEW COMMENTS